

## Datasheet for 709-1311

**F(ab')<sub>2</sub> Human (lambda chain) Antibody Peroxidase Conjugated****Overview**

<b>Description:</b>	Goat F(ab') <sub>2</sub> Anti-Human λ (lambda chain) Antibody Peroxidase Conjugated - 709-1311
<b>Item No.:</b>	709-1311
<b>Size:</b>	1 mg
<b>Applications:</b>	ELISA, WB
<b>Reactivity:</b>	Human
<b>Host Species:</b>	Goat

**Product Details**

<b>Background:</b>	F(ab') <sub>2</sub> Anti-Human lambda chain Antibody generated in goat detects lambda light chain from human. Representing approximately 75% of serum immunoglobulins, IgG is the most abundant antibody isotype found in the circulation. IgG molecules are synthesized and secreted by plasma B cells. Secondary Antibodies are available in a variety of formats and conjugate types. When choosing a secondary antibody product, consideration must be given to species and immunoglobulin specificity, conjugate type, fragment and chain specificity, level of cross-reactivity, and host-species source and fragment composition. F(ab') <sub>2</sub> Antibody is ideal for investigators who routinely perform flow cytometry, immunohistochemistry or IHC and other immunoassays. F(ab') <sub>2</sub> Anti-Human lambda chain Antibody is conjugated to Peroxidase.
<b>Synonyms:</b>	Goat F(ab') <sub>2</sub> Anti-Human λ (lambda chain) Antibody peroxidase Conjugation, Goat F(ab') <sub>2</sub> Anti-Human lambda chain HRP Conjugated Antibody
<b>Host Species:</b>	Goat
<b>Specificity:</b>	λ (lambda chain)
<b>Conjugate:</b>	Peroxidase (HRP)
<b>Clonality:</b>	Polyclonal
<b>Format:</b>	IgG F(ab') <sub>2</sub>

**Target Details**

<b>Reactivity:</b>	Human
<b>Immunogen:</b>	Human lambda light chain

**Purity/Specificity:** F(ab')<sub>2</sub> Human lambda chain Antibody Peroxidase Conjugated was prepared from monospecific antiserum by immunoaffinity chromatography using Human antigens coupled to agarose beads followed by solid phase adsorption(s) to remove any unwanted reactivities, pepsin digestion and chromatographic separation. Assay by immunoelectrophoresis resulted in a single precipitin arc against anti-Peroxidase and anti-Goat Serum. No reaction was observed against anti-Pepsin or anti-Goat IgG F(c). Specificity was confirmed by ELISA at less than 1% cross reactivity against other human heavy or light chain isotypes.

## Application Details

<b>Tested Applications:</b>	ELISA, WB
<b>Application Note:</b>	F(ab') <sub>2</sub> Anti-Human lambda chain Peroxidase Conjugated Antibody has been tested by ELISA and western blot and is ideal for ELISA, western blotting, Immunohistochemistry, as well as other antibody detection methods.
<b>Assay Dilutions:</b>	All assays should be optimized by the user. Recommended dilutions (if any) may be listed below.
<b>ELISA:</b>	1:10,000 - 1:50,000
<b>IHC:</b>	1:500 - 1:2,500
<b>WB:</b>	1:1,000 - 1:5,000

## Formulation

<b>Physical State:</b>	Lyophilized
<b>Concentration:</b>	1.0 mg/mL by UV absorbance at 280 nm
<b>Buffer:</b>	0.125 M Sodium Borate, 0.075 M Sodium Chloride, 0.005 M EDTA, pH 8.0
<b>Preservative:</b>	0.01% (w/v) Gentamicin Sulfate. Do NOT add Sodium Azide!
<b>Stabilizer:</b>	10 mg/mL Bovine Serum Albumin (BSA) - Immunoglobulin and Protease free
<b>Reconstitution Volume:</b>	1.0 mL
<b>Reconstitution Buffer:</b>	Restore with deionized water (or equivalent)

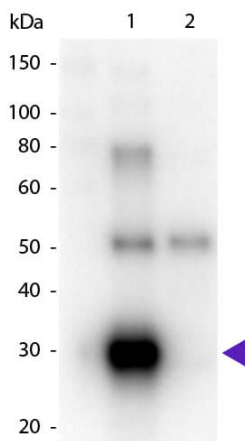
## Shipping & Handling

<b>Shipping Condition:</b>	Ambient
----------------------------	---------

**Storage Condition:** Store vial at 4° C prior to restoration. For extended storage aliquot contents and freeze at -20° C or below. Avoid cycles of freezing and thawing. Centrifuge product if not completely clear after standing at room temperature. This product is stable for several weeks at 4° C as an undiluted liquid. Dilute only prior to immediate use.

**Expiration:** Expiration date is one (1) year from date of receipt.

## Images



### Western Blot

Western Blot of Goat anti-Human  $\lambda$  (Lambda chain) Peroxidase Conjugated Secondary Antibody. Lane 1: Human  $\lambda$ . Lane 2: Human  $\kappa$ . Load: 50 ng per lane. Primary antibody: None. Secondary antibody: Peroxidase goat secondary antibody at 1:1,000 for 60 min at RT. Block: MB-070 for 30 min at RT. Predicted/Observed size: 28 kDa, 28 kDa for Human  $\lambda$ . Other band(s): Human  $\lambda$  splice variants and isoforms.

## Disclaimer

This product is for research use only and is not intended for therapeutic or diagnostic applications. Please contact a technical service representative for more information. All products of animal origin manufactured by Rockland Immunochemicals are derived from starting materials of North American origin. Collection was performed in United States Department of Agriculture (USDA) inspected facilities and all materials have been inspected and certified to be free of disease and suitable for exportation. All properties listed are typical characteristics and are not specifications. All suggestions and data are offered in good faith but without guarantee as conditions and methods of use of our products are beyond our control. All claims must be made within 30 days following the date of delivery. The prospective user must determine the suitability of our materials before adopting them on a commercial scale. Suggested uses of our products are not recommendations to use our products in violation of any patent or as a license under any patent of Rockland Immunochemicals, Inc. If you require a commercial license to use this material and do not have one, then return this material, unopened to: Rockland Inc., P.O. BOX 5199, Limerick, Pennsylvania, USA.