

Datasheet for 709-1216

F(ab')₂ Human IgG (H&L) Antibody Fluorescein Conjugated Pre-Adsorbed

Overview

Description:	Goat F(ab') ₂ Anti-Human IgG (H&L) Antibody Fluorescein Conjugated (Min X Bv Hs Ms & Rt Serum Proteins) - 709-1216
Item No.:	709-1216
Size:	1 mg
Applications:	Dot Blot
Reactivity:	Human
Host Species:	Goat

Product Details

Background:	F(ab') ₂ Anti-Human IgG (H&L) Fluorescein Antibody generated in goat detects immunoglobulin g from human, both heavy and light chains of the antibody molecule are present. Each IgG has two antigen binding sites. Representing approximately 75% of serum immunoglobulins in humans, IgG is the most abundant antibody isotype found in the circulation. IgG molecules are synthesized and secreted by plasma B cells. Secondary Antibodies are available in a variety of formats and conjugate types. When choosing a secondary antibody product, consideration must be given to species and immunoglobulin specificity, conjugate type, fragment and chain specificity, level of cross-reactivity, and host-species source and fragment composition. F(ab') ₂ Antibody is ideal for investigators who routinely perform flow cytometry, immunohistochemistry or IHC and other immunoassays.
Synonyms:	Goat F(ab') ₂ Anti-Human IgG fluorescein Conjugated Antibody Pre-Adsorbed, Goat F(ab') ₂ Anti-Human IgG Antibody FITC Conjugation
Host Species:	Goat
Specificity:	IgG (H&L)
Conjugate:	Fluorescein (FITC)
Clonality:	Polyclonal
Format:	IgG F(ab') ₂
F/P Ratio:	2.0

Target Details

Reactivity:	Human
Immunogen:	Human IgG whole molecule
Purity/Specificity:	This product was prepared from monospecific antiserum by immunoaffinity chromatography using Human IgG coupled to agarose beads followed by solid phase adsorption(s) to remove any unwanted reactivities, pepsin digestion and chromatographic separation. Assay by immunoelectrophoresis resulted in a single precipitin arc against anti-Fluorescein, anti-Goat Serum, Human IgG and Human Serum. No reaction was observed against anti-Pepsin, anti-Goat IgG F(c) or Bovine, Horse, Mouse, and Rat Serum Proteins.

Application Details

Tested Applications:	Dot Blot
Application Note:	F(ab') ₂ Anti-Human IgG (H&L) Fluorescein has been tested by dot blot and is designed for immunofluorescence microscopy, fluorescence based plate assays (FLISA) and fluorescent western blotting. This product is also suitable for multiplex analysis, including multicolor imaging, utilizing various commercial platforms. Suitable for immunomicroscopy and flow cytometry or FACS analysis as well as other antibody based fluorescent assays requiring extremely low background levels, absence of F(c) mediated binding, lot-to-lot consistency, high titer and specificity.
Assay Dilutions:	All assays should be optimized by the user. Recommended dilutions (if any) may be listed below.
FC:	1:500 - 1:2,500
FLISA:	1:10,000 - 1:50,000
IF:	1:1,000 - 1:5,000

Formulation

Physical State:	Lyophilized
Concentration:	1.0 mg/mL by UV absorbance at 280 nm
Buffer:	0.01 M Sodium Phosphate, 0.15 M Sodium Chloride, pH 7.2
Preservative:	0.01% (w/v) Sodium Azide
Stabilizer:	10 mg/mL Bovine Serum Albumin (BSA) - Immunoglobulin and Protease free
Reconstitution Volume:	1.0 mL

Reconstitution Buffer: Restore with deionized water (or equivalent)

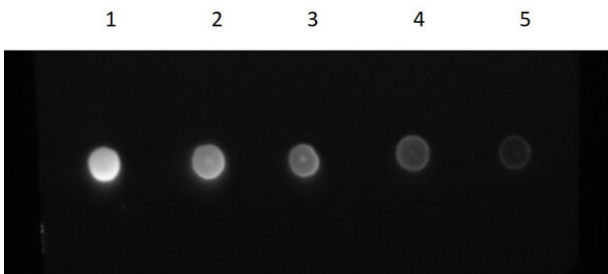
Shipping & Handling

Shipping Condition: Ambient

Storage Condition: Store vial at 4° C prior to restoration. For extended storage aliquot contents and freeze at -20° C or below. Avoid cycles of freezing and thawing. Centrifuge product if not completely clear after standing at room temperature. This product is stable for several weeks at 4° C as an undiluted liquid. Dilute only prior to immediate use.

Expiration: Expiration date is one (1) year from date of receipt.

Images



Dot Blot

Dot Blot Results of F(ab')₂ Goat Anti-Human IgG Antibody Fluorescein Conjugated. Human IgG Whole Molecule (1) 100ng, (2) 33.33ng, (3) 11.11ng, (4) 3.70ng, (5) 1.23.

Antibody: F(ab')₂ Goat Anti-Human IgG Antibody Fluorescein Conjugate at 1.0µg/mL for 1hr at RT. Block: Fluorescent Buffer (p/n MB-070) at RT for 30 mins.

Disclaimer

This product is for research use only and is not intended for therapeutic or diagnostic applications. Please contact a technical service representative for more information. All products of animal origin manufactured by Rockland Immunochemicals are derived from starting materials of North American origin. Collection was performed in United States Department of Agriculture (USDA) inspected facilities and all materials have been inspected and certified to be free of disease and suitable for exportation. All properties listed are typical characteristics and are not specifications. All suggestions and data are offered in good faith but without guarantee as conditions and methods of use of our products are beyond our control. All claims must be made within 30 days following the date of delivery. The prospective user must determine the suitability of our materials before adopting them on a commercial scale. Suggested uses of our products are not recommendations to use our products in violation of any patent or as a license under any patent of Rockland Immunochemicals, Inc. If you require a commercial license to use this material and do not have one, then return this material, unopened to: Rockland Inc., P.O. BOX 5199, Limerick, Pennsylvania, USA.