

## Datasheet for 617-103-012

## Monkey IgG gamma Antibody Peroxidase Conjugated

### Overview

<b>Description:</b>	Goat Anti-Monkey IgG (gamma chain) Antibody Peroxidase Conjugated - 617-103-012
<b>Item No.:</b>	617-103-012
<b>Size:</b>	1 mg
<b>Applications:</b>	ELISA, WB, Biochemical Assay, Functional Assay
<b>Reactivity:</b>	Monkey
<b>Host Species:</b>	Goat

### Product Details

<b>Background:</b>	Anti-Monkey IgG (gamma chain) peroxidase conjugated antibody generated in goat detects specifically Monkey IgG (gamma chain). This secondary peroxidase conjugated antibody anti-Monkey is ideal for investigators who routinely perform titration assays, western-blot, immunoprecipitation and more generally immunoassays.
<b>Synonyms:</b>	goat anti-Monkey IgG (gamma chain) peroxidase conjugated antibody, goat anti-Monkey IgG gamma antibody HRP conjugation
<b>Host Species:</b>	Goat
<b>Specificity:</b>	IgG (gamma chain)
<b>Conjugate:</b>	Peroxidase (HRP)
<b>Clonality:</b>	Polyclonal
<b>Format:</b>	IgG

### Target Details

<b>Reactivity:</b>	Monkey
<b>Immunogen Type:</b>	Native Protein
<b>Immunogen:</b>	Anti-Monkey IgG (gamma chain) was produced by repeated immunization with monkey IgG gamma heavy chain in goat.

**Purity/Specificity:** MONKEY IgG gamma Antibody Peroxidase Conjugated was prepared from monospecific antiserum by immunoaffinity chromatography using Monkey IgG coupled to agarose beads followed by solid phase adsorption(s) to remove any unwanted reactivities. Assay by immunoelectrophoresis resulted in a single precipitin arc against anti-Peroxidase, anti-Goat Serum, Monkey IgG and Monkey Serum.

**Relevant Links:**

- [617-103-012 SDS](#)

## Application Details

<b>Tested Applications:</b>	ELISA, WB
<b>Suggested Applications:</b>	Biochemical Assay, Functional Assay (Based on references)
<b>Application Note:</b>	Anti-Monkey IgG (gamma chain) peroxidase conjugated antibody has been tested by ELISA and western blot and is suitable for immunoblotting (western or dot blot), ELISA, immunoperoxidase electron microscopy and immunohistochemistry as well as other peroxidase-antibody based enzymatic assays requiring lot-to-lot consistency.
<b>Assay Dilutions:</b>	All assays should be optimized by the user. Recommended dilutions (if any) may be listed below.
<b>ELISA:</b>	1:1,000 - 1:85,000
<b>IHC:</b>	1:500 - 1:2,500
<b>WB:</b>	1:1,000 - 1:5,000

## Formulation

<b>Physical State:</b>	Lyophilized
<b>Concentration:</b>	1.0 mg/mL by UV absorbance at 280 nm
<b>Buffer:</b>	0.02 M Potassium Phosphate, 0.15 M Sodium Chloride, pH 7.2
<b>Preservative:</b>	0.01% (w/v) Gentamicin Sulfate. Do NOT add Sodium Azide!
<b>Stabilizer:</b>	10 mg/mL Bovine Serum Albumin (BSA) - Immunoglobulin and Protease free
<b>Reconstitution Volume:</b>	1.0 mL
<b>Reconstitution Buffer:</b>	Restore with deionized water (or equivalent)

## Shipping & Handling

**Shipping Condition:** Ambient

**Storage Condition:** Store vial at 4° C prior to restoration. For extended storage aliquot contents and freeze at -20° C or below. Avoid cycles of freezing and thawing. Centrifuge product if not completely clear after standing at room temperature. This product is stable for several weeks at 4° C as an undiluted liquid. Dilute only prior to immediate use.

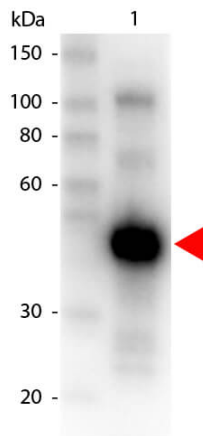
**Expiration:** Expiration date is one (1) year from date of receipt.

## Images

Product	Gt-a-Monkey IgG	Gt-a-Monkey IgA	Gt-a-Monkey IgM
Rhesus Serum	+	+	+
Baboon Serum	+	+	+
Cynomolgus Serum	+	+	+
Rhesus IgG	+		
Human IgA		+	
Human IgM			+

### Diagram

This table displays additional reactivity among various species of serum and immunoglobulin. A (+) indicates antibody reactivity to the corresponding target.



### Western Blot

Western Blot of Peroxidase conjugated Goat anti-MONKEY IgG gamma antibody. Lane 1: Monkey IgG. Lane 2: none. Load: 50 ng per lane. Primary antibody: none. Secondary antibody: Peroxidase goat secondary antibody at 1:1,000 for 30 min at RT. Block: MB-070 for 30 min at RT. Predicted/Observed size: 55 kDa for Monkey IgG Gamma. Other band(s): none.

## References

- Smith TJ. et al. Engineered IgM and IgG cleaving enzymes for mitigating antibody neutralization and complement activation in AAV gene transfer. *Mol Ther.* (2024)
- Kim JY et al. Heterologous vaccination utilizing viral vector and protein platforms confers complete protection against SFTSV. *Sci Rep.* (2023)
- Dijkman K et al. Pulmonary MTBVAC vaccination induces immune signatures previously correlated with prevention of tuberculosis infection. *Cell Rep Med.* (2021)
- Blasi M et al. Immunogenicity, safety, and efficacy of sequential immunizations with an SIV-based IDLV expressing CH505 Envs. *NPJ Vaccines.* (2020)
- Saunders KO et al. Lipid nanoparticle encapsulated nucleoside-modified mRNA vaccines elicit polyfunctional HIV-1 antibodies comparable to proteins in nonhuman primates. *Nature.* (2020)
- Blasi M et al. Therapeutic vaccination with IDLV-SIV-Gag results in durable viremia control in chronically SHIV-infected macaques. *NPJ Vaccines.* (2020)
- Felber BK. et al. Co-immunization of DNA and Protein in the Same Anatomical Sites Induces Superior Protective Immune Responses against SHIV Challenge. *Cell Rep.* (2020)
- Blasi, M et al. Therapeutic vaccination with IDLV-SIV-Gag results in durable viremia control in chronically SHIV-infected macaques. *Npj Vaccines* (2020)
- Asbach B et al. Priming with a potent HIV-1 DNA vaccine frames the quality of immune responses prior to a poxvirus and protein boost. *J Virol.* (2019)
- Kibler KV et al. Replication-competent NYVAC-KC yields improved immunogenicity to HIV-1 antigens in rhesus macaques compared to nonreplicating NYVAC. *J Virol.* (2019)
- Bissel SJ et al. Aged Chinese-origin rhesus macaques infected with SIV develop marked viremia in absence of clinical disease, inflammation or cognitive impairment. *Retrovirology* (2018)
- Furuyama W et al. Quantification of Filovirus glycoprotein-specific antibodies. *Methods Cell Biol.* (2017)
- Friedrich BM et al. ELISA and Neutralization Methods to Measure Anti-West Nile Virus Antibody Responses. *Methods Mol Biol.* (2016)
- Luo et al. Tissue memory B cell repertoire analysis after ALVAC/AIDSVAX B/E gp120 immunization of rhesus macaques. *JCI Insight* (2016)
- Caro-Aguilar I et al. Immunogenicity in mice and non-human primates of the Group A Streptococcal J8 peptide vaccine candidate conjugated to CRM197. *Hum Vaccin Immunother.* (2013)
- Fouda GGA et al. Mucosal immunization of lactating female rhesus monkeys with a transmitted/founder HIV-1 envelope induces strong Env-specific IgA antibody responses in breast milk. *J Virol.* (2013)

## Disclaimer

This product is for research use only and is not intended for therapeutic or diagnostic applications. Please contact a technical service representative for more information. All products of animal origin manufactured by Rockland Immunochemicals are derived from starting materials of North American origin. Collection was performed in United States Department of Agriculture (USDA) inspected facilities and all materials have been inspected and certified to be free of disease and suitable for exportation. All properties listed are typical characteristics and are not specifications. All suggestions and data are offered in good faith but without guarantee as conditions and methods of use of our products are beyond our control. All claims must be made within 30 days following the date of delivery. The prospective user must determine the suitability of our materials before adopting them on a commercial scale. Suggested uses of our products are not recommendations to use our products in violation of any patent or as a license under any patent of Rockland Immunochemicals, Inc. If you require a commercial license to use this material and do not have one, then return this material, unopened to: Rockland Inc., P.O. BOX 5199, Limerick, Pennsylvania, USA.