

Datasheet for 612-4104

Rat IgG F(ab')₂ Antibody**Overview**

Description:	Rabbit Anti-Rat IgG F(ab') ₂ Antibody - 612-4104
Item No.:	612-4104
Size:	10 mg
Applications:	ELISA, WB
Reactivity:	Rat
Host Species:	Rabbit

Product Details

Background:	Anti-Rat IgG F(ab') ₂ Antibody generated in rabbit recognizes the dimeric Fab portion of the rat IgG molecule. Rat IgG F(ab') ₂ is a proteolytic fragment of immunoglobulin G (IgG) obtained by limited digestion with the enzyme pepsin under controlled conditions of temperature, time and pH. F(ab') ₂ molecules lack the Fc portion of IgG and therefore receptors that bind rat IgG F(c) will not bind rat IgG F(ab') ₂ molecules. Secondary Antibodies are available in a variety of formats and conjugate types. When choosing a secondary antibody product, consideration must be given to species and immunoglobulin specificity, conjugate type, fragment and chain specificity, level of cross-reactivity, and host-species source and fragment composition.
Synonyms:	Rabbit Anti Rat IgG F(ab') ₂ Antibody, Rabbit Anti-Rat IgG Fab ₂ Antibody, Rabbit Anti-Rat IgG Fab ₂ Fragment Antibody
Host Species:	Rabbit
Specificity:	IgG F(ab') ₂
Clonality:	Polyclonal
Format:	IgG

Target Details

Reactivity:	Rat
Immunogen:	Rat IgG F(ab') ₂ fragment

Purity/Specificity: This product was prepared from monospecific antiserum by immunoaffinity chromatography using Rat IgG coupled to agarose beads followed by solid phase adsorption(s) to remove any unwanted reactivities. Assay by immunoelectrophoresis resulted in a single precipitin arc against anti-Rabbit Serum, Rat IgG, Rat IgG F(ab')₂ and Rat Serum. No reaction was observed against Rat IgG F(c).

Application Details

Tested Applications:	ELISA, WB
Application Note:	Anti-Rat IgG F(ab') ₂ antibody has been tested by ELISA and western blot and is suitable for use in immunohistochemistry. Specific conditions for reactivity should be optimized by the end user.
Assay Dilutions:	All assays should be optimized by the user. Recommended dilutions (if any) may be listed below.
ELISA:	1:20,000 - 1:100,000
IHC:	1:1,000 - 1:5,000
WB:	1:2,000 - 1:10,000

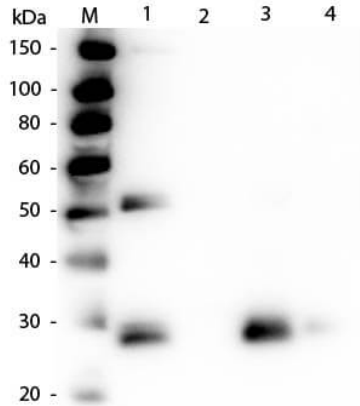
Formulation

Physical State:	Liquid (sterile filtered)
Concentration:	7.3 mg/mL by UV absorbance at 280 nm
Buffer:	0.01 M Sodium Phosphate, 0.15 M Sodium Chloride, pH 7.2
Preservative:	0.01% (w/v) Sodium Azide
Stabilizer:	None

Shipping & Handling

Shipping Condition:	Wet Ice
Storage Condition:	Store vial at 4° C prior to opening. This product is stable for several weeks at 4° C as an undiluted liquid. Dilute only prior to immediate use. For extended storage aliquot contents and freeze at -20° C or below. Avoid cycles of freezing and thawing.
Expiration:	Expiration date is one (1) year from date of receipt.

Images



Western Blot

Western Blot of Anti-Rat IgG F(ab')₂ (RABBIT) Antibody (p/n 612-4104). Lane M: 3 µl Molecular Ladder. Lane 1: Rat IgG whole molecule (p/n 012-0102). Lane 2: Rat IgG F(c) Fragment (p/n 012-0103). Lane 3: Rat IgG Fab Fragment (p/n 012-0105). Lane 4: Rat IgM Whole Molecule (p/n 012-0107). All samples were reduced. Load: 50 ng per lane. Block: MB-070 for 30 min at RT. Primary Antibody: Anti-Rat IgG F(ab')₂ (RABBIT) Antibody (p/n 612-4104) 1:1,000 for 60 min at RT. Secondary Antibody: Anti-Rabbit IgG (GOAT) Peroxidase Conjugated Antibody (p/n 611-103-122) 1:40,000 in MB-070 for 30 min at RT. Predicted/Observed Size: 25 and 55 kDa for Rat IgG, 25 kDa for F(c) and Fab, 78 and 25 kDa for IgM. Rat F(c) migrates slightly higher.

Disclaimer

This product is for research use only and is not intended for therapeutic or diagnostic applications. Please contact a technical service representative for more information. All products of animal origin manufactured by Rockland Immunochemicals are derived from starting materials of North American origin. Collection was performed in United States Department of Agriculture (USDA) inspected facilities and all materials have been inspected and certified to be free of disease and suitable for exportation. All properties listed are typical characteristics and are not specifications. All suggestions and data are offered in good faith but without guarantee as conditions and methods of use of our products are beyond our control. All claims must be made within 30 days following the date of delivery. The prospective user must determine the suitability of our materials before adopting them on a commercial scale. Suggested uses of our products are not recommendations to use our products in violation of any patent or as a license under any patent of Rockland Immunochemicals, Inc. If you require a commercial license to use this material and do not have one, then return this material, unopened to: Rockland Inc., P.O. BOX 5199, Limerick, Pennsylvania, USA.