

**Datasheet for 612-401-E36****Synaptophysin 2 Antibody****Overview**

<b>Description:</b>	Anti-Synaptophysin 2 (RABBIT) Antibody - 612-401-E36
<b>Item No.:</b>	612-401-E36
<b>Size:</b>	100 µL
<b>Applications:</b>	WB
<b>Reactivity:</b>	Rat
<b>Host Species:</b>	Rabbit

**Product Details**

<b>Background:</b>	Synaptophysin 2 antibody detects Synaptophysin 2, also known as Synaptoporin, which is a component of the synaptic vesicle membrane and thought to play an important role in synaptic vesicle trafficking. It is highly homologous to Synaptophysin 1, yet differs in expression. Whereas Synaptophysin 1 is ubiquitously expressed, Synaptophysin 2 is concentrated in the mossy fiber synapses of the hippocampus.
<b>Synonyms:</b>	Synaptoporin Antibody, Synpr, rabbit polyclonal anti-synaptophysin, synaptophysin antibodies
<b>Host Species:</b>	Rabbit
<b>Clonality:</b>	Polyclonal
<b>Format:</b>	IgG

**Target Details**

<b>Gene Name:</b>	Synpr
<b>Reactivity:</b>	Rat
<b>Immunogen Type:</b>	Conjugated Peptide
<b>Immunogen:</b>	Anti-Synaptophysin 2 Antibody was produced in rabbit by repeated immunizations with synthetic peptide corresponding to amino acid residues from the C-terminal region of synaptophysin 2.

**Purity/Specificity:** Anti-Synaptophysin 2 antibody is directed against synaptophysin 2 or synaptoporin. Synaptophysin 2 antibody was affinity purified from monospecific antiserum by immunoaffinity purification. This antibody is directed against rat synaptophysin 2 protein. Reactivity is expected from the following species based on 100% sequence homology: mouse.

**Relevant Links:**

- [UniProtKB - P22831](#)
- [GeneID - 66030](#)

## Application Details

**Tested Applications:** WB

**Application Note:** Anti-Synaptophysin 2 (Rabbit) antibody is tested for use in Western Blotting and ICC. Specific conditions for reactivity should be optimized by the end user. Expect a band of approximately 38 kDa in size corresponding to the synaptoporin protein in the appropriate cell lysate or extract. Researchers should determine optimal titers for applications that are not stated below.

**Assay Dilutions:** All assays should be optimized by the user. Recommended dilutions (if any) may be listed below.

**WB:** 1:1000

## Formulation

**Physical State:** Liquid

**Buffer:** 0.01 M HEPES, 0.15 M Sodium Chloride, pH 7.5

**Stabilizer:** 0.1 mg/ml Bovine Serum Albumin (BSA) - IgG and Protease free, 50% (v/v) Glycerol

## Shipping & Handling

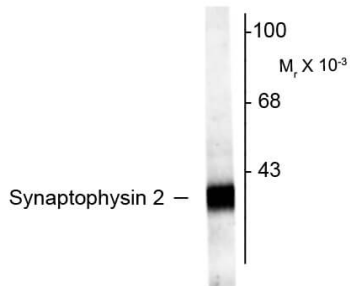
**Shipping Condition:** Dry Ice

**Storage Condition:** Store vial at -20° C prior to opening. This product is stable at 4° C as an undiluted liquid. For extended storage, aliquot contents and freeze at -20° C or below. Avoid cycles of freezing and thawing. Dilute only prior to immediate use.

**Expiration:** Expiration date is one (1) year from date of receipt.

## Images

### Anti-Synaptophysin 2



Western blot of rat hippocampal lysate showing specific immunolabeling of the ~38k synaptophysin 2 protein.

### Western Blot

Western Blot of Rabbit anti-Synaptophysin 2 antibody. Lane 1: rat hippocampal lysate. Lane 2: none. Load: 10 µg per lane. Primary antibody: Synaptophysin 2 antibody at 1:1,000 for overnight at 4°C. Secondary antibody: IRDye800™ rabbit secondary antibody at 1:10,000 for 45 min at RT. Block: 5% BLOTTO overnight at 4°C. Predicted/Observed size: 38 kDa for Synaptophysin 2. Other band(s): none.

## Disclaimer

This product is for research use only and is not intended for therapeutic or diagnostic applications. Please contact a technical service representative for more information. All products of animal origin manufactured by Rockland Immunochemicals are derived from starting materials of North American origin. Collection was performed in United States Department of Agriculture (USDA) inspected facilities and all materials have been inspected and certified to be free of disease and suitable for exportation. All properties listed are typical characteristics and are not specifications. All suggestions and data are offered in good faith but without guarantee as conditions and methods of use of our products are beyond our control. All claims must be made within 30 days following the date of delivery. The prospective user must determine the suitability of our materials before adopting them on a commercial scale. Suggested uses of our products are not recommendations to use our products in violation of any patent or as a license under any patent of Rockland Immunochemicals, Inc. If you require a commercial license to use this material and do not have one, then return this material, unopened to: Rockland Inc., P.O. BOX 5199, Limerick, Pennsylvania, USA.