

Datasheet for 612-401-E33**Synapsin I phospho S62 + S67 Antibody****Overview**

Description:	Anti-Synapsin I pS62/pS67 (RABBIT) Antibody - 612-401-E33
Item No.:	612-401-E33
Size:	100 µL
Applications:	WB
Reactivity:	Rat
Host Species:	Rabbit

Product Details

Background:	Synapsin I pS62/67 antibody detects phosphorylated Synapsin I, which plays a key role in synaptic plasticity in brain. This effect is due in large part to the ability of the synapsins to regulate the availability of synaptic vesicles for release. The role of synapsin in synaptic plasticity and in synaptogenesis is regulated by phosphorylation. Ser 549 along with Ser 62 and Ser 67 are the sites of Synapsin I that are phosphorylated by MAP kinase. Anti-Synapsin I pS62/pS67 Antibody is ideal for investigators involved in Cell Signaling, Neuroscience, Signal Transduction research.
Synonyms:	Synapsin I, SYN1, Synapsin-1
Host Species:	Rabbit
Clonality:	Polyclonal
Format:	IgG

Target Details

Gene Name:	Syn1
Reactivity:	Rat
PTM Specificity:	Phosphorylation
Immunogen Type:	Conjugated Peptide

Immunogen:	Anti-Synapsin I pS62/pS67 Antibody was produced in rabbit by repeated immunizations with synthetic phospho-peptide corresponding to amino acid residues surrounding Ser62/67 of Synapsin I protein.
Purity/Specificity:	Anti-Synapsin I pS62/67 antibody is directed against rat Synapsin I. Synapsin I pS62/67 antibody was affinity purified from monospecific antiserum by immunoaffinity purification. Immunolabeling of the synapsin I band is blocked by preadsorption with the phospho-peptide used as antigen but not by the corresponding non-phosphorylated peptide. Reactivity is expected from the following species based on 100% sequence homology: mouse and bovine.
Relevant Links:	<ul style="list-style-type: none">• UniProtKB - P09951• GeneID - 24949• NCBI - NP_001104252.1

Application Details

Tested Applications:	WB
Application Note:	Anti-Synapsin I pS62/pS67 (Rabbit) antibody is tested for use in Western Blotting. Specific conditions for reactivity should be optimized by the end user. Expect a band of approximately 78 kDa in size corresponding to synapsin I doublet phosphorylated at Ser62/67 in the appropriate cell lysate or extract. Researchers should determine optimal titers for applications that are not stated below.
Assay Dilutions:	All assays should be optimized by the user. Recommended dilutions (if any) may be listed below.
WB:	1:1000
Other:	Titred value sufficient to run approximately 10 mini blots.

Formulation

Physical State:	Liquid
Concentration:	10 titrated reagent
Buffer:	0.01 M HEPES, 0.15 M Sodium Chloride, pH 7.5
Stabilizer:	0.1 mg/ml Bovine Serum Albumin (BSA) - IgG and Protease free, 50% (v/v) Glycerol

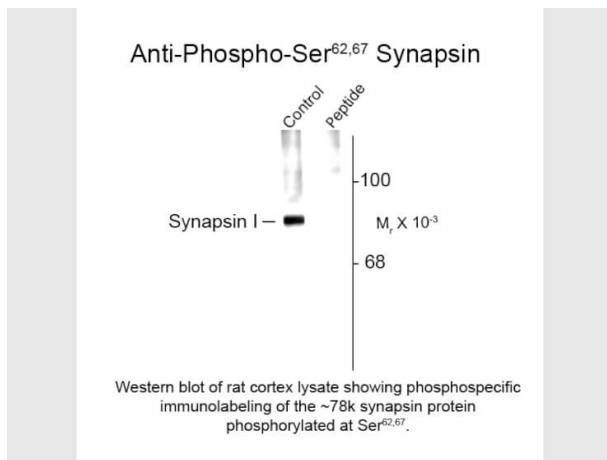
Shipping & Handling

Shipping Condition:	Dry Ice
----------------------------	---------

Storage Condition: Store vial at -20° C prior to opening. This product is stable at 4° C as an undiluted liquid. For extended storage, aliquot contents and freeze at -20° C or below. Avoid cycles of freezing and thawing. Dilute only prior to immediate use.

Expiration: Expiration date is one (1) year from date of receipt.

Images



Western Blot

Western Blot of Rabbit anti-Synapsin I pS62/pS67 antibody. Lane 1: rat cortex lysate (control). Lane 2: Peptide. Load: 10 µg per lane. Primary antibody: Synapsin I pS62/pS67 antibody at 1:1,000 for overnight at 4°C. Secondary antibody: IRDye800™ rabbit secondary antibody at 1:10,000 for 45 min at RT. Block: 5% BLOTTO overnight at 4°C. Predicted/Observed size: 78 kDa for Synapsin I pS62/pS67. Other band(s): none.

Disclaimer

This product is for research use only and is not intended for therapeutic or diagnostic applications. Please contact a technical service representative for more information. All products of animal origin manufactured by Rockland Immunochemicals are derived from starting materials of North American origin. Collection was performed in United States Department of Agriculture (USDA) inspected facilities and all materials have been inspected and certified to be free of disease and suitable for exportation. All properties listed are typical characteristics and are not specifications. All suggestions and data are offered in good faith but without guarantee as conditions and methods of use of our products are beyond our control. All claims must be made within 30 days following the date of delivery. The prospective user must determine the suitability of our materials before adopting them on a commercial scale. Suggested uses of our products are not recommendations to use our products in violation of any patent or as a license under any patent of Rockland Immunochemicals, Inc. If you require a commercial license to use this material and do not have one, then return this material, unopened to: Rockland Inc., P.O. BOX 5199, Limerick, Pennsylvania, USA.