

**Datasheet for 612-401-E20****Rab3 Antibody****Overview**

<b>Description:</b>	Anti-Rab 3 (RABBIT) Antibody - 612-401-E20
<b>Item No.:</b>	612-401-E20
<b>Size:</b>	100 µL
<b>Applications:</b>	WB
<b>Reactivity:</b>	Rat
<b>Host Species:</b>	Rabbit

**Product Details**

<b>Background:</b>	Rab 3 Antibody detects Rab 3 which belongs to the Ras small GTPase superfamily. The GTP-binding Rab3 subfamily has 4 known isoforms: 3A, 3B, 3C, and 3D. These proteins are expressed in highest concentrations in brain and endocrine tissues and involved in regulated exocytosis of hormones and neurotransmitters. Specifically, Rab3's are thought to play a key role in presynaptic vesicle trafficking and priming.
<b>Synonyms:</b>	Ras-related protein Rab-3A, Rab3a
<b>Host Species:</b>	Rabbit
<b>Clonality:</b>	Polyclonal
<b>Format:</b>	IgG

**Target Details**

<b>Gene Name:</b>	Rab3a
<b>Reactivity:</b>	Rat
<b>Immunogen Type:</b>	Conjugated Peptide
<b>Immunogen:</b>	Anti-Rab 3 Antibody was produced in rabbit by repeated immunizations with synthetic peptide corresponding to amino acid residues from the N-terminal region conjugated to KLH.

**Purity/Specificity:** Anti-Rab 3 antibodies was affinity purified from monospecific antiserum by immunoaffinity purification. This antibody is directed against rat Rab3 proteins. Cross reactivity with Rab 3 from other species has not been determined, however, the sequence of the immunogen shows 100% identity to human, mouse, Xenopus and non-human primates, therefore cross reactivity is expected.

**Relevant Links:**

- [UniProtKB - P63012](#)
- [GeneID - 25531](#)
- [NCBI - NP\\_037150.2](#)

## Application Details

**Tested Applications:** WB

**Application Note:** Anti-Rab 3 (Rabbit) antibody is tested for use in Western Blots. Specific conditions for reactivity should be optimized by the end user. Expect a band of approximately 27 kDa in size corresponding to Rab3 protein in the appropriate cell lysate or extract.

**Assay Dilutions:** All assays should be optimized by the user. Recommended dilutions (if any) may be listed below.

**WB:** 1:1000

## Formulation

**Physical State:** Liquid

**Buffer:** 0.01 M HEPES, 0.15 M Sodium Chloride, pH 7.5

**Stabilizer:** 0.1 mg/ml Bovine Serum Albumin (BSA) - IgG and Protease free, 50% (v/v) Glycerol

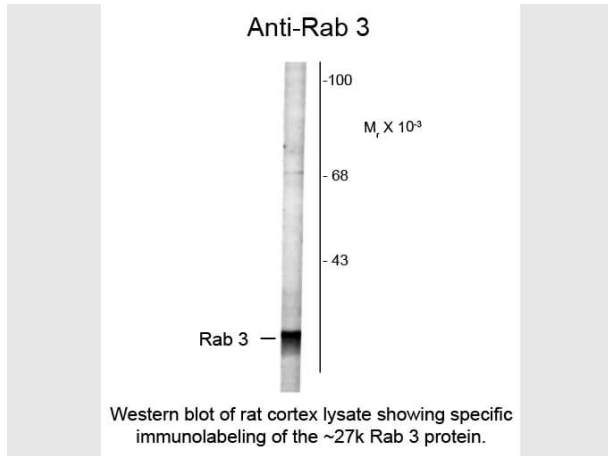
## Shipping & Handling

**Shipping Condition:** Dry Ice

**Storage Condition:** Store vial at -20° C prior to opening. Aliquot contents and freeze at -20° C or below for extended storage. Avoid cycles of freezing and thawing. Centrifuge product if not completely clear after standing at room temperature. This product is stable for several weeks at 4° C as an undiluted liquid. Dilute only prior to immediate use.

**Expiration:** Expiration date is one (1) year from date of receipt.

## Images



### Western Blot

Western Blot of Rabbit anti-Rab 3 antibody. Lane 1: rat cortex lysate. Lane 2: none. Load: 10 µg per lane. Primary antibody: Rab 3 antibody at 1:1,000 for overnight at 4°C. Secondary antibody: IRDye800™ rabbit secondary antibody at 1:10,000 for 45 min at RT. Block: 5% BLOTTO overnight at 4°C. Predicted/Observed size: 27 kDa for Rab 3. Other band (s): none.

## Disclaimer

This product is for research use only and is not intended for therapeutic or diagnostic applications. Please contact a technical service representative for more information. All products of animal origin manufactured by Rockland Immunochemicals are derived from starting materials of North American origin. Collection was performed in United States Department of Agriculture (USDA) inspected facilities and all materials have been inspected and certified to be free of disease and suitable for exportation. All properties listed are typical characteristics and are not specifications. All suggestions and data are offered in good faith but without guarantee as conditions and methods of use of our products are beyond our control. All claims must be made within 30 days following the date of delivery. The prospective user must determine the suitability of our materials before adopting them on a commercial scale. Suggested uses of our products are not recommendations to use our products in violation of any patent or as a license under any patent of Rockland Immunochemicals, Inc. If you require a commercial license to use this material and do not have one, then return this material, unopened to: Rockland Inc., P.O. BOX 5199, Limerick, Pennsylvania, USA.