

Datasheet for 612-401-E01**NSF Antibody****Overview**

Description:	Anti-NSF (N-ethylmaleimide sensitive fusion protein) (RABBIT) Antibody - 612-401-E01
Item No.:	612-401-E01
Size:	100 µL
Applications:	WB
Reactivity:	Rat
Host Species:	Rabbit

Product Details

Background:	NSF Antibody detects N-ethylmaleimide sensitive fusion protein. NSF (N-ethylmaleimide sensitive fusion protein) is a critical component of the SNARE (soluble NSF attachment protein receptors) protein complex that is involved in synaptic vesicle trafficking. Specifically, NSF has been found to be essential in membrane fusion. Furthermore, NSF has been recently demonstrated to bind other protein complexes such as AMPA receptor subunits (GluR2), GATE-16, LMA-1 and Rabs suggesting a more diverse role in the assembly of various protein complexes. Anti-NSF Antibody is ideal for investigators involved in Cell Signaling and Enzyme research.
Synonyms:	Vesicle-fusing ATPase, N-ethylmaleimide-sensitive fusion protein, NEM-sensitive fusion protein, Vesicular-fusion protein NSF
Host Species:	Rabbit
Clonality:	Polyclonal
Format:	IgG

Target Details

Gene Name:	Nsf
Reactivity:	Rat
Immunogen Type:	Conjugated Peptide
Immunogen:	Anti-NSF Antibody was produced by repeated immunizations with synthetic peptide corresponding to amino acid residues from the C-terminal region.

Purity/Specificity: Anti-NSF antibody is directed against rat N-ethylmaleimide sensitive fusion protein. The antibody was affinity purified from monospecific antiserum by immunoaffinity purification. Reactivity is expected from the following species based on 100% sequence homology: human and mouse.

Relevant Links:

- [NCBI - NP_068516.1](#)
- [GeneID - 60355](#)
- [UniProtKB - Q9QUL6.1](#)

Application Details

Tested Applications: WB

Application Note: Anti-NSF Antibody is tested for use in Western Blotting. Specific conditions for reactivity should be optimized by the end user. Expect a band of approximately 75 kDa in size corresponding to the NSF protein in the appropriate cell lysate or extract.

Assay Dilutions: All assays should be optimized by the user. Recommended dilutions (if any) may be listed below.

WB: 1:1000

Formulation

Physical State: Liquid

Buffer: 0.01 M HEPES, 0.15 M Sodium Chloride, pH 7.5

Stabilizer: 0.1 mg/ml Bovine Serum Albumin (BSA) - IgG and Protease free, 50% (v/v) Glycerol

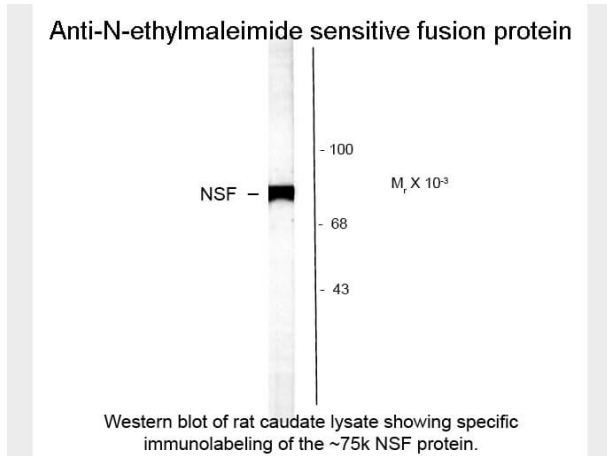
Shipping & Handling

Shipping Condition: Dry Ice

Storage Condition: Store vial at -20° C prior to opening. This product is stable at 4° C as an undiluted liquid. For extended storage, aliquot contents and freeze at -20° C or below. Avoid cycles of freezing and thawing. Dilute only prior to immediate use.

Expiration: Expiration date is one (1) year from date of receipt.

Images



Western Blot

Western Blot of Rabbit anti-NSF (N-ethylmaleimide sensitive fusion protein) antibody. Lane 1: rat caudate lysate. Lane 2: none. Load: 10 μ g per lane. Primary antibody: NSF antibody at 1:1,000 for overnight at 4°C. Secondary antibody: IRDye800™ rabbit secondary antibody at 1:10,000 for 45 min at RT. Block: 5% BLOTTO overnight at 4°C. Predicted/Observed size: 75 kDa for NSF. Other band(s): none.

Disclaimer

This product is for research use only and is not intended for therapeutic or diagnostic applications. Please contact a technical service representative for more information. All products of animal origin manufactured by Rockland Immunochemicals are derived from starting materials of North American origin. Collection was performed in United States Department of Agriculture (USDA) inspected facilities and all materials have been inspected and certified to be free of disease and suitable for exportation. All properties listed are typical characteristics and are not specifications. All suggestions and data are offered in good faith but without guarantee as conditions and methods of use of our products are beyond our control. All claims must be made within 30 days following the date of delivery. The prospective user must determine the suitability of our materials before adopting them on a commercial scale. Suggested uses of our products are not recommendations to use our products in violation of any patent or as a license under any patent of Rockland Immunochemicals, Inc. If you require a commercial license to use this material and do not have one, then return this material, unopened to: Rockland Inc., P.O. BOX 5199, Limerick, Pennsylvania, USA.