

Datasheet for 612-401-D92**NMDA R2B phospho Y1252 Antibody****Overview**

Description:	Anti-NMDA R2B pY1252 (RABBIT) Antibody - 612-401-D92
Item No.:	612-401-D92
Size:	100 µL
Applications:	IHC, WB
Reactivity:	Mouse, Rat
Host Species:	Rabbit

Product Details

Background:	NMDA R2B pY1252 Antibody detects NMDA R2B protein. The NMDA receptor (NMDAR) plays an essential role in memory, neuronal development and it has also been implicated in several disorders of the central nervous system including Alzheimer's, epilepsy and ischemic neuronal cell death. The rat NMDAR1 (NR1) was the first subunit of the NMDAR to be cloned. The NR1 protein can form NMDA activated channels when expressed in <i>Xenopus</i> oocytes but the currents in such channels are much smaller than those seen in situ. Channels with more physiological characteristics are produced when the NR1 subunit is combined with one or more of the NMDAR2 (NR2 A-D) subunits. Phosphorylation of Tyr1252 is thought to potentiate NMDA receptor-dependent influx of calcium. Anti-NMDA R2B pY1252 Antibody is ideal for investigators involved in Neuroscience, Signal Transduction, and Cell Signaling Research.
Synonyms:	Glutamate [NMDA] receptor subunit epsilon-2, N-methyl D-aspartate receptor subtype 2B, NMDAR2B, NR2B, Grin2b
Host Species:	Rabbit
Clonality:	Polyclonal
Format:	IgG

Target Details

Gene Name:	Grin2b
Reactivity:	Mouse, Rat
PTM Specificity:	Phosphorylation

Immunogen Type:	Conjugated Peptide
Immunogen:	Anti-NMDA R2B pY1252 Antibody was produced by repeated immunizations with synthetic phospho-peptide corresponding to amino acid residues surrounding Tyr1252.
Purity/Specificity:	Anti-NMDA R2B pY1252 antibody is directed against rat NMDA R2B protein. NMDA R2B pY1252 antibody was affinity purified from monospecific antiserum by immunoaffinity purification. The antibody is specific for the phosphorylated NMDA R2B protein. Immunolabeling of the NMDA NR2B subunit band is blocked by the phosphopeptide used as the antigen but not by the corresponding dephosphopeptide. Immunolabeling is also blocked by lambda-phosphatase treatment. The antibody may also show some slight reactivity with Tyr1246 of NR2A. Reactivity is expected from the following species based on 100% sequence homology: bovine, canine, chicken, human, mouse, non-human primate and zebra fish.
Relevant Links:	<ul style="list-style-type: none">• UniProtKB - Q00960• GenelD - 24410• UniProtKB - Q00960.1

Application Details

Tested Applications:	IHC, WB
Application Note:	Anti-NMDA R2B pY1252 Antibody is tested for use in Western Blotting and IHC. Expect a band of approximately 180 kDa in size corresponding to NMDAR NR2B subunit protein phosphorylated at Tyr1252 in the appropriate cell lysate or extract. Specific conditions for reactivity should be optimized by the end user.
Assay Dilutions:	All assays should be optimized by the user. Recommended dilutions (if any) may be listed below.
IHC:	1:400
WB:	1:1000

Formulation

Physical State:	Liquid
Buffer:	0.01 M HEPES, 0.15 M Sodium Chloride, pH 7.5
Stabilizer:	0.1 mg/ml Bovine Serum Albumin (BSA) - IgG and Protease free, 50% (v/v) Glycerol

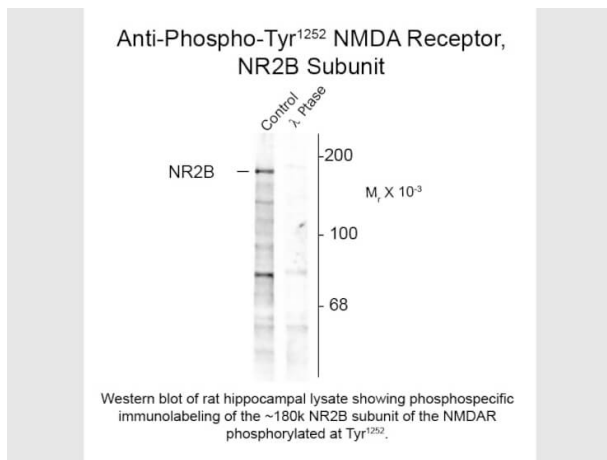
Shipping & Handling

Shipping Condition:	Dry Ice
----------------------------	---------

Storage Condition: Store vial at -20° C prior to opening. This product is stable at 4° C as an undiluted liquid. For extended storage, aliquot contents and freeze at -20° C or below. Avoid cycles of freezing and thawing. Dilute only prior to immediate use.

Expiration: Expiration date is one (1) year from date of receipt.

Images



Western Blot

Western Blot of Rabbit anti-NMDA R2B pT1252 antibody. Lane 1: rat hippocampal lysate (control). Lane 2: λ-Ptase. Load: 10 µg per lane. Primary antibody: NMDA R2B pT1252 antibody at 1:1,000 for overnight at 4°C. Secondary antibody: IRDye800™ rabbit secondary antibody at 1:10,000 for 45 min at RT. Block: 5% BLOTTO overnight at 4°C. Predicted/Observed size: 180 kDa for NMDA R2B pT1252. Other band(s): NMDA R2B pT1252 splice variants and isoforms.

Disclaimer

This product is for research use only and is not intended for therapeutic or diagnostic applications. Please contact a technical service representative for more information. All products of animal origin manufactured by Rockland Immunochemicals are derived from starting materials of North American origin. Collection was performed in United States Department of Agriculture (USDA) inspected facilities and all materials have been inspected and certified to be free of disease and suitable for exportation. All properties listed are typical characteristics and are not specifications. All suggestions and data are offered in good faith but without guarantee as conditions and methods of use of our products are beyond our control. All claims must be made within 30 days following the date of delivery. The prospective user must determine the suitability of our materials before adopting them on a commercial scale. Suggested uses of our products are not recommendations to use our products in violation of any patent or as a license under any patent of Rockland Immunochemicals, Inc. If you require a commercial license to use this material and do not have one, then return this material, unopened to: Rockland Inc., P.O. BOX 5199, Limerick, Pennsylvania, USA.