

Datasheet for 612-401-D74

## MEK5 phospho S311/phospho T315 Antibody

### Overview

<b>Description:</b>	Anti-MEK5 pS311/pT315 (RABBIT) Antibody - 612-401-D74
<b>Item No.:</b>	612-401-D74
<b>Size:</b>	100 µL
<b>Applications:</b>	WB
<b>Reactivity:</b>	Rat
<b>Host Species:</b>	Rabbit

### Product Details

<b>Background:</b>	MEK5 pS311/pT315 antibody detects MEK5 that is phosphorylated at Ser311 and Threonine315. MEK5 (also known as MKK5) is a dual specificity serine/threonine protein kinase belonging to the MAP kinase kinase family. MEK5 has been shown to specifically activate ERK5 whereas MEK5 itself is regulated by MEKK3. An important link between MEK5 and metastatic prostate cancer has been demonstrated. Dual phosphorylation of Ser311 and Thr315 have been implicated in cell proliferation. Therefore, MEK5 pS311/pT315 antibody is ideal for investigators involved in Cell Signaling, Cell Migration and Proliferation and, more generally in Cancer Research.
<b>Synonyms:</b>	Dual specificity mitogen-activated protein kinase kinase 5, MAP kinase kinase 5, MAPKK 5, MAPK/ERK kinase 5
<b>Host Species:</b>	Rabbit
<b>Clonality:</b>	Polyclonal
<b>Format:</b>	IgG

### Target Details

<b>Gene Name:</b>	Map2k5
<b>Reactivity:</b>	Rat
<b>PTM Specificity:</b>	Phosphorylation
<b>Immunogen Type:</b>	Conjugated Peptide

**Immunogen:** Anti-MEK5 pS311/pT315 Antibody was produced in rabbit by repeated immunizations with synthetic phospho-peptide corresponding to amino acid residues surrounding Ser311/Thr315 conjugated to KLH.

**Purity/Specificity:** Anti-MEK5 pS311/pT315 antibody is directed against rat MEK5. MEK5 antibody was affinity purified from monospecific antiserum by immunoaffinity purification. Immunolabeling of the MEK5 band is blocked by preadsorption with the phospho-peptide used as antigen but not by the corresponding dephospho-peptide. Expect reactivity with the following species based on sequence homology: bovine, canine, chicken, human, mouse, non-human primates, Xenopus and zebra fish. Cross reactivity with MEK5 pS311/pT315 from other species has not been determined.

**Relevant Links:**

- [UniProtKB - Q62862](#)
- [GeneID - 29568](#)
- [UniProtKB - Q62862.1](#)

## Application Details

**Tested Applications:** WB

**Application Note:** Anti-MEK5 pS311/pT315 (Rabbit) antibody is tested for use in Western Blotting. Specific conditions for reactivity should be optimized by the end user. Expect a band of approximately 49 kDa in size corresponding to MEK5 protein phosphorylated at Ser311/Thr315 in the appropriate cell lysate or extract.

**Assay Dilutions:** All assays should be optimized by the user. Recommended dilutions (if any) may be listed below.

**WB:** 1:1000

## Formulation

**Physical State:** Liquid

**Concentration:** Titrated value sufficient to run approximately 10 mini blots.

**Buffer:** 0.01 M HEPES, 0.15 M Sodium Chloride, pH 7.5

**Stabilizer:** 0.1 mg/ml Bovine Serum Albumin (BSA) - IgG and Protease free, 50% (v/v) Glycerol

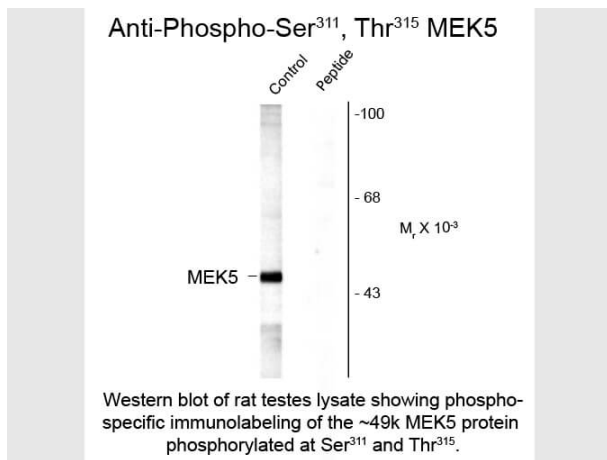
## Shipping & Handling

**Shipping Condition:** Dry Ice

**Storage Condition:** Store vial at -20° C prior to opening. This product is stable at 4° C as an undiluted liquid. For extended storage, aliquot contents and freeze at -20° C or below. Avoid cycles of freezing and thawing. Dilute only prior to immediate use.

**Expiration:** Expiration date is one (1) year from date of receipt.

## Images



### Western Blot

Western Blot of Rabbit Anti-MEK5 pS311/pT315 antibody. Lane 1: rat testes. Lane 2: rat testes blocked by preadsorption with the phospho-peptide. Load: 10 µg per lane. Primary antibody: MEK5 pS311/pT315 antibody at 1:400 for overnight at 4°C. Secondary antibody: IRDye800™ rabbit secondary antibody at 1:10,000 for 45 min at RT. Block: 5% BLOTTO overnight at 4°C. Predicted/Observed size: ~49kDa/~49kDa for MEK5 protein. Other band(s): none.

## Disclaimer

This product is for research use only and is not intended for therapeutic or diagnostic applications. Please contact a technical service representative for more information. All products of animal origin manufactured by Rockland Immunochemicals are derived from starting materials of North American origin. Collection was performed in United States Department of Agriculture (USDA) inspected facilities and all materials have been inspected and certified to be free of disease and suitable for exportation. All properties listed are typical characteristics and are not specifications. All suggestions and data are offered in good faith but without guarantee as conditions and methods of use of our products are beyond our control. All claims must be made within 30 days following the date of delivery. The prospective user must determine the suitability of our materials before adopting them on a commercial scale. Suggested uses of our products are not recommendations to use our products in violation of any patent or as a license under any patent of Rockland Immunochemicals, Inc. If you require a commercial license to use this material and do not have one, then return this material, unopened to: Rockland Inc., P.O. BOX 5199, Limerick, Pennsylvania, USA.