

Datasheet for 612-401-D17**Clavesin Antibody****Overview**

Description:	Anti-Clavesin (RABBIT) Antibody - 612-401-D17
Item No.:	612-401-D17
Size:	100 µL
Applications:	WB
Reactivity:	Rat
Host Species:	Rabbit

Product Details

Background:	Clavesin antibody recognizes clavesin (clathrin vesicle associated Sec14 protein) which is a novel neuron specific protein that has recently been identified and shown to be required for normal morphology of late endosomes and/or lysosomes as lentiviral-mediated knockdown of clavesin in hippocampal neurons causes lysosomal defects. Additionally, upregulation of clavesin in human hepatocellular carcinoma has recently been demonstrated thus making it a useful marker for this disease state. Anti-Clavesin antibody is ideal for investigators involved in Cell Signaling, Neuroscience, Signal Transduction research.
Synonyms:	Retinaldehyde-binding protein 1-like 1, Clavesin-1, Rlbp111, Clvs1, Clavesin-2, Retinaldehyde-binding protein 1-like 2, Rlbp112, Clvs2
Host Species:	Rabbit
Clonality:	Polyclonal
Format:	IgG

Target Details

Gene Name:	Clvs1/Clvs2
Reactivity:	Rat
Immunogen Type:	Conjugated Peptide
Immunogen:	Anti-Clavesin Antibody was produced in rabbit by repeated immunizations with synthetic peptide corresponding to amino acid residues from the C-terminal region conjugated to KLH.

Purity/Specificity: Anti-Clavesin antibody is directed against rat Clavesin protein. The antibody was affinity purified from monospecific antiserum by immunoaffinity purification. Cross reactivity with Clavesin from other species has not been determined. However, reactivity is also expected from the following species based on 100% sequence homology: mouse and human.

Relevant Links:

- [UniProtKB - A6JFQ6](#)
- [GeneID - 366311](#)
- [NCBI - A6JFQ6.1](#)

Application Details

Tested Applications: WB

Application Note: Anti-Clavesin antibody is tested for use in ELISA, Western Blotting and ICC. Specific conditions for reactivity should be optimized by the end user. Expect a band of approximately 35 kDa in size corresponding to clavesin protein doublet in Western Blots of rat brain lysate. Isoform-specific knock down in cultured hippocampal neurons indicates that the lower and upper bands are clavesin 1 and 2, respectively.

Assay Dilutions: All assays should be optimized by the user. Recommended dilutions (if any) may be listed below.

ELISA: 1:10,000

WB: 1:1000

Formulation

Physical State: Liquid

Buffer: 0.02 M Potassium Phosphate, 0.15 M Sodium Chloride, pH 7.2

Stabilizer: 50% (v/v) Glycerol

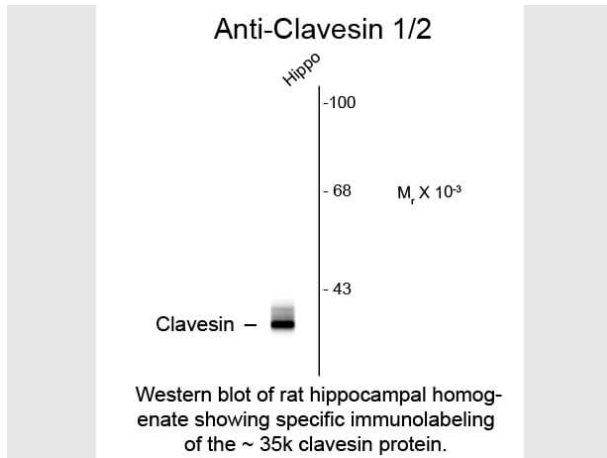
Shipping & Handling

Shipping Condition: Dry Ice

Storage Condition: Store vial at -20° C prior to opening. This product is stable at 4° C as an undiluted liquid. For extended storage, aliquot contents and freeze at -20° C or below. Avoid cycles of freezing and thawing. Dilute only prior to immediate use.

Expiration: Expiration date is one (1) year from date of receipt.

Images



Western Blot

Western Blot of Anti-Clavesin (Rabbit) Antibody. Lane 1: rat hippocampal homogenate. Lane 2: none. Load: 10 µg per lane. Primary antibody: Clavesin antibody at 1:400 for overnight at 4°C. Secondary antibody: IRDye800™ rabbit secondary antibody at 1:10,000 for 45 min at RT. Block: 5% BLOTTO overnight at 4°C. Predicted/Observed size: ~35kDa/~kDa for clavesin protein. Other band(s): none.

Disclaimer

This product is for research use only and is not intended for therapeutic or diagnostic applications. Please contact a technical service representative for more information. All products of animal origin manufactured by Rockland Immunochemicals are derived from starting materials of North American origin. Collection was performed in United States Department of Agriculture (USDA) inspected facilities and all materials have been inspected and certified to be free of disease and suitable for exportation. All properties listed are typical characteristics and are not specifications. All suggestions and data are offered in good faith but without guarantee as conditions and methods of use of our products are beyond our control. All claims must be made within 30 days following the date of delivery. The prospective user must determine the suitability of our materials before adopting them on a commercial scale. Suggested uses of our products are not recommendations to use our products in violation of any patent or as a license under any patent of Rockland Immunochemicals, Inc. If you require a commercial license to use this material and do not have one, then return this material, unopened to: Rockland Inc., P.O. BOX 5199, Limerick, Pennsylvania, USA.