

Datasheet for 612-401-C70

Alpha Synuclein phospho S129 Antibody

Overview

Description:	Anti-Alpha Synuclein pS129 (RABBIT) Antibody - 612-401-C70
Item No.:	612-401-C70
Size:	100 µL
Applications:	WB
Reactivity:	Human, Mouse, Rat
Host Species:	Rabbit

Product Details

Background:	Alpha Synuclein pS129 Antibody detects Alpha-synuclein phosphorylated at S129. Alpha-synuclein is a presynaptic neuronal protein that is thought to be involved in the formation of SNARE complexes. Most significantly, aggregated alpha-synuclein is one of the major components found in the Lewy bodies that occur in Parkinson's disease (PD) and other neurodegenerative disorders. Mutation of the alpha-synuclein gene is associated with familial forms of PD. Recent evidence suggests that phosphorylation of alpha-synuclein at Ser129 plays a role in the formation of inclusions in PD. Anti-Alpha-synuclein pS129 antibody is ideal for investigators involved in Cell Signaling, Neuroscience, Signal Transduction research.
Synonyms:	Non-A beta component of AD amyloid, Non-A4 component of amyloid precursor, Alpha-synuclein, Snca
Host Species:	Rabbit
Clonality:	Polyclonal
Format:	IgG

Target Details

Gene Name:	Snca
Reactivity:	Human, Mouse, Rat
PTM Specificity:	Phosphorylation
Immunogen Type:	Conjugated Peptide

Immunogen:	Anti-Alpha Synuclein pS129 Antibody was produced by repeated immunizations with a synthetic phospho peptide corresponding to amino acid residues surrounding Ser129.
Purity/Specificity:	Anti-Alpha Synuclein pS129 Antibody is directed against rat Alpha-synuclein phosphorylated at S129. The antibody was prepared from monospecific antiserum by immunoaffinity chromatography using phospho peptide coupled to agarose beads followed by solid phase adsorption(s) against non-phospho peptide and non-specific peptide to remove any unwanted reactivities. Assay by immunoelectrophoresis resulted in a single precipitin arc against anti-Rabbit Serum. This antibody is specific for phosphorylated Alpha-synuclein. Minimal reactivity occurs against non-phosphorylated Alpha-synuclein. Reactivity against Alpha-synuclein occurs from rat sources. Reactivity is expected against the following species based on 100% sequence homology: bovine, canine, and non-human primate.
Relevant Links:	<ul style="list-style-type: none">• NCBI - NP_062042.1• UniProtKB - P37377• GenelD - 29219

Application Details

Tested Applications:	WB
Application Note:	Alpha Synuclein pS129 antibody is tested for use in ELISA, Western Blotting. Specific conditions for reactivity should be optimized by the end user. Expect a band of approximately 15 kDa in size corresponding to the alpha synuclein protein phosphorylated at Ser129 in the appropriate cell lysate or extract.
Assay Dilutions:	All assays should be optimized by the user. Recommended dilutions (if any) may be listed below.
ELISA:	1:10,000
WB:	1:1000

Formulation

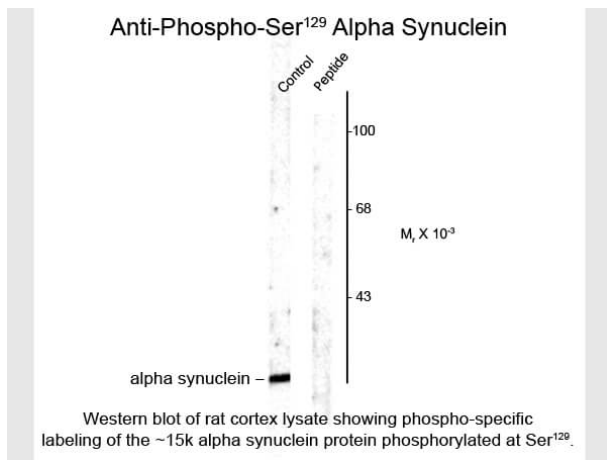
Physical State:	Liquid
Concentration:	Titred value sufficient to run approximately 10 mini blots.
Buffer:	0.01 M HEPES, 0.15 M Sodium Chloride, pH 7.5
Stabilizer:	0.1 mg/ml Bovine Serum Albumin (BSA) - IgG and Protease free, 50% (v/v) Glycerol

Shipping & Handling

Shipping Condition:	Dry Ice
----------------------------	---------

Storage Condition:	Store vial at -20° C prior to opening. This product is stable at 4° C as an undiluted liquid. For extended storage, aliquot contents and freeze at -20° C or below. Avoid cycles of freezing and thawing. Dilute only prior to immediate use.
Expiration:	Expiration date is one (1) year from date of receipt.

Images



Western Blot

Western Blot of Alpha synuclein ser129 Antibody. Lane 1: rat cortex lysate. Lane 2: rat cortex lysate blocked by the phosphopeptide. Load: 10 µg per lane. Primary antibody: Alpha synuclein ser129 antibody at 1:400 for overnight at 4°C. Secondary antibody: IRDye800™ rabbit secondary antibody at 1:10,000 for 45 min at RT. Block: 5% BLOTTO overnight at 4°C. Predicted/Observed size: ~15 kDa/~15 kDa alpha synuclein protein phosphorylated at Ser129. Other band(s): none.

Disclaimer

This product is for research use only and is not intended for therapeutic or diagnostic applications. Please contact a technical service representative for more information. All products of animal origin manufactured by Rockland Immunochemicals are derived from starting materials of North American origin. Collection was performed in United States Department of Agriculture (USDA) inspected facilities and all materials have been inspected and certified to be free of disease and suitable for exportation. All properties listed are typical characteristics and are not specifications. All suggestions and data are offered in good faith but without guarantee as conditions and methods of use of our products are beyond our control. All claims must be made within 30 days following the date of delivery. The prospective user must determine the suitability of our materials before adopting them on a commercial scale. Suggested uses of our products are not recommendations to use our products in violation of any patent or as a license under any patent of Rockland Immunochemicals, Inc. If you require a commercial license to use this material and do not have one, then return this material, unopened to: Rockland Inc., P.O. BOX 5199, Limerick, Pennsylvania, USA.