

Datasheet for 612-401-253

Beta Amyloid Antibody

Overview

Description:	Anti-Beta Amyloid (RABBIT) Antibody - 612-401-253
Item No.:	612-401-253
Size:	100 µL
Applications:	WB
Reactivity:	Mouse, Rat
Host Species:	Rabbit

Product Details

Background:	Anti-Beta Amyloid antibody recognizes beta amyloid protein also called amyloid precursor protein (APP). A large body of evidence has implicated the APP in the pathogenesis of Alzheimer's disease (AD). The phosphorylation of APP at Thr668 is thought to play a critical role in generation of the soluble APP (beta) and beta-amyloid peptide (abeta) which are the major components of senile plaques in patient brains inflicted with AD. Anti-Beta Amyloid antibody is ideal for investigators involved in Cell Signaling, Neuroscience, Signal Transduction research.
Synonyms:	Amyloid beta A4 protein, ABPP, Alzheimer disease amyloid A4 protein homolog, Amyloidogenic glycoprotein, A-beta, ABeta antibody
Host Species:	Rabbit
Clonality:	Polyclonal
Format:	IgG

Target Details

Gene Name:	APP
Reactivity:	Mouse, Rat
Immunogen Type:	Conjugated Peptide
Immunogen:	Anti-Beta Amyloid Antibody was produced by repeated immunizations with synthetic peptide corresponding to amino acid residues from the C-terminal region.

Purity/Specificity: Anti-Beta Amyloid Antibody is directed against rat Beta Amyloid proteins. The antibody is directed against rat Beta Amyloid. Anti-Beta Amyloid antibody was affinity purified from monospecific antiserum by immunoaffinity purification. Cross reactivity with beta amyloid from other species has not been determined. However, reactivity is also expected from the following species based on 100% sequence homology: canine, chicken, human, mouse and non-human primate.

Relevant Links:

- [NCBI - NP_062161.1](#)
- [UniProtKB - P08592](#)
- [GeneID - 54226](#)

Application Details

Tested Applications: WB

Application Note: Anti-Beta Amyloid antibody is tested for use in ELISA, Western Blotting. Specific conditions for reactivity should be optimized by the end user. Expect a band of approximately 115 kDa in size corresponding to the APP protein in the appropriate cell lysate or extract.

Assay Dilutions: All assays should be optimized by the user. Recommended dilutions (if any) may be listed below.

ELISA: 1:10,000

WB: 1:1000

Formulation

Physical State: Liquid

Buffer: 0.01 M HEPES, 0.15 M Sodium Chloride, pH 7.5

Stabilizer: 0.1 mg/ml Bovine Serum Albumin (BSA) - IgG and Protease free, 50% (v/v) Glycerol

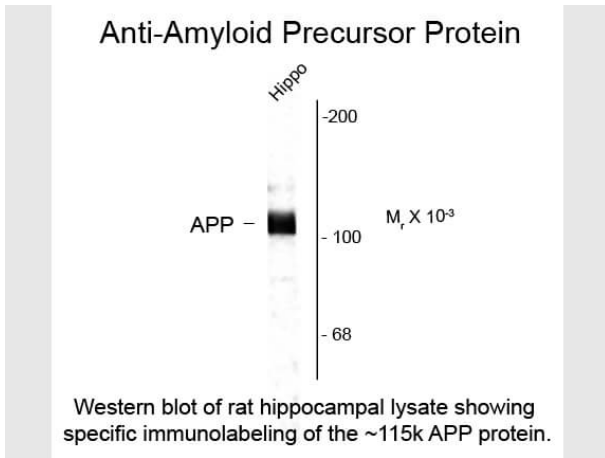
Shipping & Handling

Shipping Condition: Dry Ice

Storage Condition: Store vial at -20° C prior to opening. This product is stable at 4° C as an undiluted liquid. For extended storage, aliquot contents and freeze at -20° C or below. Avoid cycles of freezing and thawing. Dilute only prior to immediate use.

Expiration: Expiration date is one (1) year from date of receipt.

Images



Western Blot

Western Blot of Rabbit Anti-Beta Amyloid antibody. Lane 1: rat hippocampal lysate. Lane 2: none. Load: 10 μ g per lane. Primary antibody: Beta Amyloid antibody at 1:400 for overnight at 4°C. Secondary antibody: IRDye800™ rabbit secondary antibody at 1:10,000 for 45 min at RT. Block: 5% BLOTTO overnight at 4°C. Predicted/Observed size: 115 kDa, ~115kDa for APP protein. Other band(s): none.

Disclaimer

This product is for research use only and is not intended for therapeutic or diagnostic applications. Please contact a technical service representative for more information. All products of animal origin manufactured by Rockland Immunochemicals are derived from starting materials of North American origin. Collection was performed in United States Department of Agriculture (USDA) inspected facilities and all materials have been inspected and certified to be free of disease and suitable for exportation. All properties listed are typical characteristics and are not specifications. All suggestions and data are offered in good faith but without guarantee as conditions and methods of use of our products are beyond our control. All claims must be made within 30 days following the date of delivery. The prospective user must determine the suitability of our materials before adopting them on a commercial scale. Suggested uses of our products are not recommendations to use our products in violation of any patent or as a license under any patent of Rockland Immunochemicals, Inc. If you require a commercial license to use this material and do not have one, then return this material, unopened to: Rockland Inc., P.O. BOX 5199, Limerick, Pennsylvania, USA.