

## Datasheet for 612-1606

**Rat IgA (alpha chain) Antibody Biotin Conjugated****Overview**

<b>Description:</b>	Goat Anti-Rat IgA (alpha chain) Antibody Biotin Conjugated - 612-1606
<b>Item No.:</b>	612-1606
<b>Size:</b>	1 mg
<b>Applications:</b>	WB
<b>Reactivity:</b>	Rat
<b>Host Species:</b>	Goat

**Product Details**

<b>Background:</b>	Anti-Rat IgA Antibody generated in goat detects immunoglobulin A alpha chain from rat. Immunoglobulin A (IgA) is an antibody that plays a critical role in mucosal immunity. IgA has two subclasses (IgA1 and IgA2) and can exist in a dimeric form called secretory IgA (sIgA). Secondary Antibodies are available in a variety of formats and conjugate types. When choosing a secondary antibody product, consideration must be given to species and immunoglobulin specificity, conjugate type, fragment and chain specificity, level of cross-reactivity, and host-species source and fragment composition. This Anti-Rat IgA is conjugated to Biotin
<b>Synonyms:</b>	Goat anti-Rat IgA (alpha chain) biotin Conjugated Antibody, Goat anti-Rat IgA alpha Antibody biotin Conjugation
<b>Host Species:</b>	Goat
<b>Specificity:</b>	IgA
<b>Conjugate:</b>	Biotin
<b>Clonality:</b>	Polyclonal
<b>Format:</b>	IgG

**Target Details**

<b>Reactivity:</b>	Rat
<b>Immunogen:</b>	Rat IgA alpha heavy chain

**Purity/Specificity:** This product was prepared from monospecific antiserum by immunoaffinity chromatography using Rat IgA coupled to agarose beads followed by solid phase adsorption(s) to remove any unwanted reactivities. Assay by immunoelectrophoresis resulted in a single precipitin arc against anti-biotin, anti-Goat Serum, Rat IgA and Rat Serum. No reaction was observed against other Rat heavy or light chain proteins.

---

## Application Details

**Tested Applications:** WB

---

**Application Note:** Anti-Rat IgA Biotin Conjugated Antibody has been tested by western blot and assayed against 1.0 ug of Rat IgA in a standard capture ELISA using Peroxidase Conjugated Streptavidin #S000-03 and ABTS (2,2'-azino-bis-[3-ethylbenthiiazoline-6-sulfonic acid]) code # ABTS-100 as a substrate for 30 minutes at room temperature. A working dilution of 1:10,000 to 1:30,000 of the reconstitution concentration is suggested for this product.

---

**Assay Dilutions:** All assays should be optimized by the user. Recommended dilutions (if any) may be listed below.

---

**ELISA:** 1:20,000 - 1:100,000

---

**IHC:** 1:1,000 - 1:5,000

---

**WB:** 1:2,000 - 1:10,000

---

## Formulation

**Physical State:** Lyophilized

---

**Concentration:** 1.0 mg/mL by UV absorbance at 280 nm

---

**Buffer:** 0.02 M Potassium Phosphate, 0.15 M Sodium Chloride, pH 7.2

---

**Preservative:** 0.01% (w/v) Sodium Azide

---

**Stabilizer:** 10 mg/mL Bovine Serum Albumin (BSA) - Immunoglobulin and Protease free

---

**Reconstitution Volume:** 1.0 mL

---

**Reconstitution Buffer:** Restore with deionized water (or equivalent)

---

## Shipping & Handling

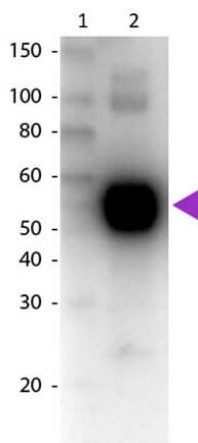
**Shipping Condition:** Ambient

---

**Storage Condition:** Store vial at 4° C prior to restoration. For extended storage aliquot contents and freeze at -20° C or below. Avoid cycles of freezing and thawing. Centrifuge product if not completely clear after standing at room temperature. This product is stable for several weeks at 4° C as an undiluted liquid. Dilute only prior to immediate use.

**Expiration:** Expiration date is one (1) year from date of receipt.

## Images



### Western Blot

Western Blot of Biotin Conjugated Goat Anti-Rat IgA (Alpha chain) Secondary Antibody. Lane 1: Molecular Weight Marker. Lane 2: Mouse IgA Kappa. Load: 100 ng per lane. Primary antibody: Rat IgA (Alpha chain) antibody biotin conjugated at 1:1,000 for 60 min at RT. Secondary antibody: Peroxidase streptavidin secondary antibody at 1:40,000 for 30 min at RT. Blocking: MB-070 for 30 min at RT. Predicted/Observed size: 55 kDa, 55 kDa for Rat IgA. Other band(s): None.

## Disclaimer

This product is for research use only and is not intended for therapeutic or diagnostic applications. Please contact a technical service representative for more information. All products of animal origin manufactured by Rockland Immunochemicals are derived from starting materials of North American origin. Collection was performed in United States Department of Agriculture (USDA) inspected facilities and all materials have been inspected and certified to be free of disease and suitable for exportation. All properties listed are typical characteristics and are not specifications. All suggestions and data are offered in good faith but without guarantee as conditions and methods of use of our products are beyond our control. All claims must be made within 30 days following the date of delivery. The prospective user must determine the suitability of our materials before adopting them on a commercial scale. Suggested uses of our products are not recommendations to use our products in violation of any patent or as a license under any patent of Rockland Immunochemicals, Inc. If you require a commercial license to use this material and do not have one, then return this material, unopened to: Rockland Inc., P.O. BOX 5199, Limerick, Pennsylvania, USA.