

Datasheet for 611-901-002

Rabbit IgG (H&L) Antibody**Overview**

Description:	Chicken Anti-Rabbit IgG (H&L) Antibody - 611-901-002
Item No.:	611-901-002
Size:	2 mg
Applications:	WB
Reactivity:	Rabbit
Host Species:	Chicken

Product Details

Background:	Anti-Rabbit IgG (H&L) generated in chicken detects rabbit Immunoglobulin G. Both the Heavy and Light chains of the antibody molecule are present. Representing approximately 75% of serum immunoglobulins, IgG is the most abundant antibody isotype found in the circulation. IgG molecules are synthesized and secreted by plasma B cells. Secondary Antibodies are available in a variety of formats and conjugate types. When choosing a secondary antibody product, consideration must be given to species and immunoglobulin specificity, conjugate type, fragment and chain specificity, level of cross-reactivity, and host-species source and fragment composition.
Synonyms:	Chicken Anti Rabbit IgG Antibody, Chicken Anti-Rabbit IgG Antibody
Host Species:	Chicken
Specificity:	IgG (H&L)
Clonality:	Polyclonal
Format:	IgG

Target Details

Reactivity:	Rabbit
Immunogen:	Rabbit IgG whole molecule

Purity/Specificity: This product was prepared from monospecific antiserum by immunoaffinity chromatography using Rabbit IgG coupled to agarose beads followed by solid phase adsorption(s) to remove any unwanted reactivities. Assay by immunoelectrophoresis resulted in a single precipitin arc against anti-Chicken Serum, Rabbit IgG and Rabbit Serum.

Application Details

Tested Applications:	WB
Application Note:	Anti-Rabbit IgG antibody is suitable for use in ELISA, immunohistochemistry, and western blot. Specific conditions for reactivity should be optimized by the end user.
Assay Dilutions:	All assays should be optimized by the user. Recommended dilutions (if any) may be listed below.
ELISA:	1:20,000 - 1:100,000
IHC:	1:1,000 - 1:5,000
WB:	1:2,000 - 1:10,000

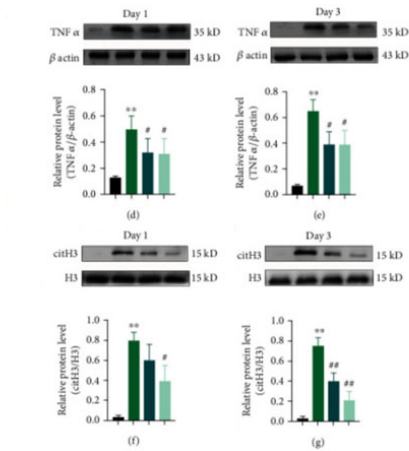
Formulation

Physical State:	Liquid (sterile filtered)
Concentration:	2.0 mg/mL by UV absorbance at 280 nm
Buffer:	0.02 M Potassium Phosphate, 0.15 M Sodium Chloride, pH 7.2
Preservative:	0.01% (w/v) Sodium Azide
Stabilizer:	None

Shipping & Handling

Shipping Condition:	Wet Ice
Storage Condition:	Store vial at 4° C prior to opening. This product is stable for several weeks at 4° C as an undiluted liquid. Dilute only prior to immediate use. For extended storage aliquot contents and freeze at -20° C or below. Avoid cycles of freezing and thawing.
Expiration:	Expiration date is one (1) year from date of receipt.

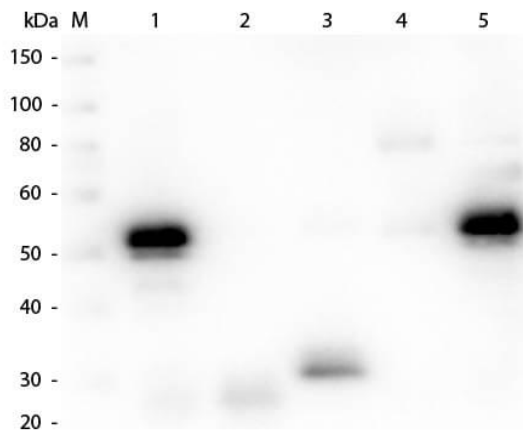
Images



Western Blot

Protective effects of Eda.B against NETs and inflammatory factors.

(d–g) Protein levels of TNF α and citH3 at day 1 and day 3 after stroke. Representative bands are on the top. Figure 4. PMID: 36032782.



Western Blot

Western Blot of Anti-Rabbit IgG (H&L) (CHICKEN) Antibody (p/n 611-901-002). Lane M: 3 μ l Molecular Ladder. Lane 1: Rabbit IgG whole molecule (p/n 011-0102). Lane 2: Rabbit IgG F(ab) Fragment (p/n 011-0105). Lane 3: Rabbit IgG F(c) Fragment (p/n 010-0103). Lane 4: Rabbit IgM Whole Molecule (p/n 011-0107). Lane 5: Normal Rabbit Serum (p/n B309). All samples were reduced. Load: 50 ng per lane. Block: MB-070 for 30 min at RT. Primary Antibody: Anti-Rabbit IgG (H&L) (CHICKEN) Antibody (p/n 611-901-002) 1:1,000 for 60 min at RT. Secondary antibody: Anti-Chicken IgG (GOAT) Peroxidase Conjugated Antibody (p/n 603-103-126) 1:40,000 in MB-070 for 30 min at RT. Predicted/Observed Size: 25 and 50 kDa for Rabbit IgG and Serum, 25 kDa for F(c) and F(ab), 70 and 23 kDa for IgM. Rabbit F(c) migrates slightly higher.

References

- Yuanxiang Huang et al. Edaravone Dexborneol Downregulates Neutrophil Extracellular Trap Expression and Ameliorates Blood-Brain Barrier Permeability in Acute Ischemic Stroke. *Mediators Inflamm.* (2022)

Disclaimer

This product is for research use only and is not intended for therapeutic or diagnostic applications. Please contact a technical service representative for more information. All products of animal origin manufactured by Rockland Immunochemicals are derived from starting materials of North American origin. Collection was performed in United States Department of Agriculture (USDA) inspected facilities and all materials have been inspected and certified to be free of disease and suitable for exportation. All properties listed are typical characteristics and are not specifications. All suggestions and data are offered in good faith but without guarantee as conditions and methods of use of our products are beyond our control. All claims must be made within 30 days following the date of delivery. The prospective user must determine the suitability of our materials before adopting them on a commercial scale. Suggested uses of our products are not recommendations to use our products in violation of any patent or as a license under any patent of Rockland Immunochemicals, Inc. If you require a commercial license to use this material and do not have one, then return this material, unopened to: Rockland Inc., P.O. BOX 5199, Limerick, Pennsylvania, USA.