

Datasheet for 611-145-122

Rabbit IgG (H&L) Antibody DyLight™ 800 Conjugated Pre-Adsorbed**Overview**

Description:	Goat Anti-Rabbit IgG (H&L) Antibody DyLight™ 800 Conjugated (Min X Bv Ch Gt GP Ham Hs Hu Ms Rt & Sh Serum Proteins) - 611-145-122
Item No.:	611-145-122
Size:	100 µg
Applications:	Dot Blot, Other, WB
Reactivity:	Rabbit
Host Species:	Goat

Product Details

Background:	Conjugated DyLight™ 800 secondary antibody is designed for immunofluorescence microscopy, fluorescence based plate assays (FLISA) and fluorescent western blotting. This product is also suitable for multiplex analysis, including multicolor imaging, utilizing various commercial platforms.
Synonyms:	Goat anti-Rabbit IgG Antibody DyLight™800 Conjugation, Goat anti-Rabbit IgG DyLight™ 800 Conjugated Antibody
Host Species:	Goat
Specificity:	IgG (H&L)
Conjugate:	DyLight™ 800
Clonality:	Polyclonal
Format:	IgG
F/P Ratio:	2.5

Target Details

Reactivity:	Rabbit
Immunogen:	Rabbit IgG whole molecule

Purity/Specificity: This DyLight™ 800 conjugated secondary antibody was prepared from monospecific antiserum by immunoaffinity chromatography using Rabbit IgG coupled to agarose beads followed by solid phase adsorption(s) to remove any unwanted reactivities. Assay by immunoelectrophoresis resulted in a single precipitin arc against anti-Goat Serum, Rabbit IgG and Rabbit Serum. No reaction was observed against Bovine, Chicken, Goat, Guinea Pig, Hamster, Horse, Human, Mouse, Rat and Sheep Serum Proteins. This antibody will react with heavy chains of rabbit IgG and with light chains of most rabbit immunoglobulins.

Relevant Links:

- [611-145-122 SDS](#)

Application Details

Tested Applications:	Dot Blot
Suggested Applications:	Other, WB (Based on references)
Application Note:	Anti-Rabbit IgG DyLight™800 has been tested by dot blot. The emission spectra for this DyLight™ conjugate match the principle output wavelengths of most common fluorescence instrumentation.
Assay Dilutions:	All assays should be optimized by the user. Recommended dilutions (if any) may be listed below.
FLISA:	>1:20,000
IF:	>1:5,000
WB:	>1:10,000

Formulation

Physical State:	Lyophilized
Concentration:	1.0 mg/mL by UV absorbance at 280 nm
Buffer:	0.02 M Potassium Phosphate, 0.15 M Sodium Chloride, pH 7.2
Preservative:	0.01% (w/v) Sodium Azide
Stabilizer:	10 mg/mL Bovine Serum Albumin (BSA) - Immunoglobulin and Protease free
Reconstitution Volume:	100 µL
Reconstitution Buffer:	Restore with deionized water (or equivalent)

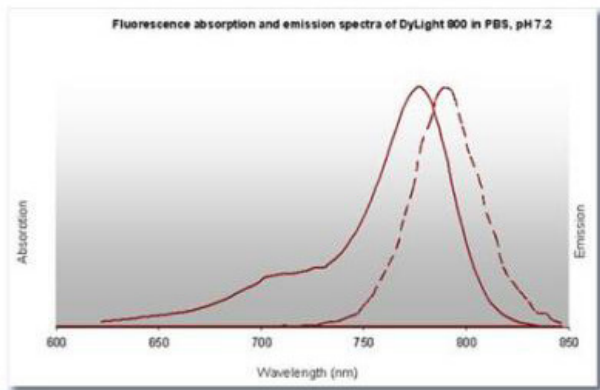
Shipping & Handling

Shipping Condition: Ambient

Storage Condition: Store vial at 4° C prior to restoration. For extended storage aliquot contents and freeze at -20° C or below. Avoid cycles of freezing and thawing. Centrifuge product if not completely clear after standing at room temperature. This product is stable for several weeks at 4° C as an undiluted liquid. Dilute only prior to immediate use.

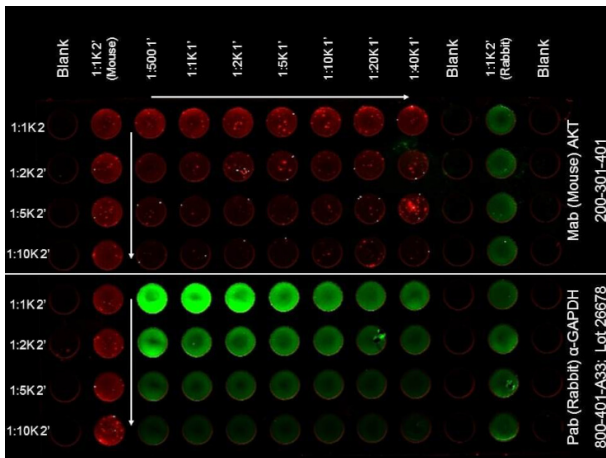
Expiration: Expiration date is one (1) year from date of receipt.

Images



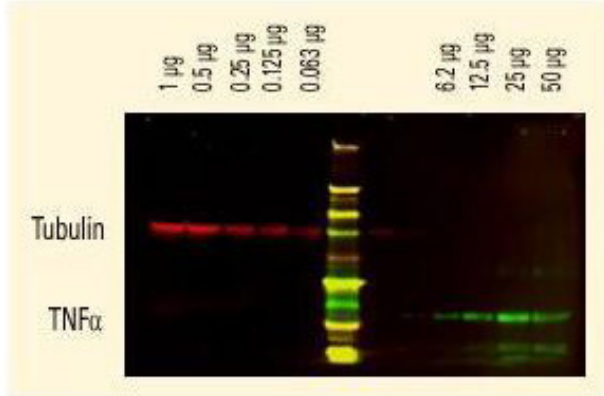
Diagram

Rabbit IgG (H&L) (Goat) Antibody DyLight™ 800 Conjugated
 (Min X Bv Ch Gt GP Ham Hs Hu Ms Rt & Sh Serum Proteins)



ELISA

ELISA of DyLight™ 800 Conjugated Goat Anti-Rabbit Secondary Antibody. Antigen: HCT-116 cell line. Coating amount: Confluent in the 96 well plate. Primary antibody: AKT or GAPDH antibody at 2 µg/mL. Dilution series: Primary and Secondary Antibodies 2-fold. Mid-point concentration: N/A. Secondary antibody: DyLight™ 680 donkey secondary antibody and DyLight™ 800 goat secondary antibody starting at 1:1,000. Substrate: None.









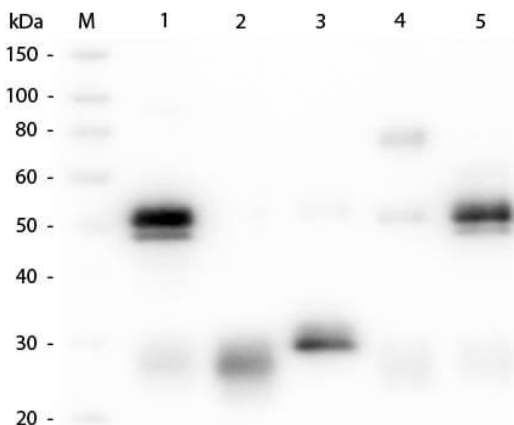
Western Blot

DyLight™ dyes can be used for two-color Western Blot detection with low background and high signal. Anti-tubulin was detected using a DyLight™ 680 conjugate. Anti-TNFα was detected using a DyLight™ 800 conjugate. The image was captured using the Odyssey® Infrared Imaging System developed by LI-COR.

Diagram

Properties of DyLight™ Conjugates.

Emission	Color	DyLight™ Dye	Ex/Em (nm)	ϵ ($M^{-1} cm^{-1}$)	Similar Dyes
Blue		405	400/420	30,000	Alexa™ 405, Cascade Blue
Green		488	493/518	70,000	Alexa™ 488, Cy2®, FITC
Yellow		549	550/568	150,000	Alexa™ 546, Alexa 555, Cy3®, TRITC
Red		649	646/674	250,000	Alexa™ 647, Cy5®
Near Infrared		680	682/715	140,000	Alexa™ 680, Cy5.5®, IRDye™ 700
Infrared		800	770/794	270,000	IRDye™ 800



Western Blot

Western Blot of Unconjugated Anti-Rabbit IgG (H&L) (GOAT) Antibody (Min X Bv, Ch, Gt, GP, Ham, Hs, Hu, Ms, Rt & Sh Serum Proteins) (p/n 611-101-122). Lane M: 3 μ l Molecular Ladder. Lane 1: Rabbit IgG whole molecule (p/n 011-0102). Lane 2: Rabbit IgG F(ab) Fragment (p/n 011-0105). Lane 3: Rabbit IgG F(c) Fragment (p/n 010-0103). Lane 4: Rabbit IgM Whole Molecule (p/n 011-0107). Lane 5: Normal Rabbit Serum (p/n B309). All samples were reduced. Load: 50 ng per lane. Block: MB-070 for 30 min at RT. Primary Antibody: Anti-Rabbit IgG (H&L) (GOAT) Antibody (Min X Bv, Ch, Gt, GP, Ham, Hs, Hu, Ms, Rt & Sh Serum Proteins) (p/n 611-101-122) 1:1,000 for 60 min at RT. Secondary antibody: Anti-Goat IgG (DONKEY) Peroxidase Conjugated Antibody (p/n CUST10) 1:40,000 in MB-070 for 30 min at RT. Predicted/Observed Size: 25 and 50 kDa for Rabbit IgG and Serum, 25 kDa for F(c) and F(ab), 70 and 23 kDa for IgM. Rabbit F(c) migrates slightly higher.

References

- Herndon ME et al. The highly metastatic 4T1 breast carcinoma model possesses features of a hybrid epithelial/mesenchymal phenotype. *Dis Model Mech.* (2024)
- Shi G et al. Astragaloside IV promotes cerebral angiogenesis and neurological recovery after focal ischemic stroke in mice via activating PI3K/Akt/mTOR signaling pathway. *Heliyon.* (2023)
- Szewczyk B et al. FUS ALS neurons activate major stress pathways and reduce translation as an early protective mechanism against neurodegeneration. *Cell Rep.* (2023)
- Dabrowski R et al. Parallel phospholipid transfer by Vps13 and Atg2 determines autophagosome biogenesis dynamics. *J Cell Biol.* (2023)
- Wang B et al. Intracerebral hemorrhage alters $\alpha\delta 1$ and thrombospondin expression in rats. *Exp Ther Med.* (2022)
- Joshi, H et al. L-plastin enhances NLRP3 inflammasome assembly and bleomycin-induced lung fibrosis. *Cell Reports* (2022)
- Chen J et al. Inhibition of Acyl-CoA Synthetase Long-Chain Family Member 4 Facilitates Neurological Recovery After Stroke by Regulation Ferroptosis. *Front Cell Neurosci.* (2021)
- Tichy ED et al. Persistent NF- κ B activation in muscle stem cells induces proliferation-independent telomere shortening. *Cell Rep.* (2021)
- Zhang P et al. Atorvastatin alleviates microglia-mediated neuroinflammation via modulating the microbial composition and the intestinal barrier function in ischemic stroke mice. *Free Radic Biol Med.* (2021)
- Xue J et al. Caffeine improves bladder function in diabetic rats via a neuroprotective effect. *Exp Ther Med.* (2021)
- Mitra S, Bodor DL, David AF, et al. Genetic screening identifies a SUMO protease dynamically maintaining centromeric chromatin. *Nat Commun.* (2020)
- Takahashi H, Ranjan A, Chen S, et al. The role of Mediator and Little Elongation Complex in transcription termination. *Nat Commun.* (2020)
- Acin-Perez R et al. Analyzing electron transport chain supercomplexes. *Methods Cell Biol.* (2020)
- Mastro TL et al. A sex difference in the response of the rodent postsynaptic density to synGAP haploinsufficiency. *Elife.* (2020)
- Navarro R et al. TGF- β -induced IGFBP-3 is a key paracrine factor from activated pericytes that promotes colorectal cancer cell migration and invasion. *Mol Oncol.* (2020)
- Chen J et al. Ginsenoside Rg1 promotes cerebral angiogenesis via the PI3K/Akt/mTOR signaling pathway in ischemic mice. *Eur J Pharmacol.* (2019)
- Latorre-Pellicer A et al. Regulation of mother-to-offspring transmission of mtDNA heteroplasmy. *Cell Metab.* (2019)
- McManus MJ et al. Mitochondrial DNA variation dictates expressivity and progression of nuclear DNA mutations causing cardiomyopathy. *Cell Metab.* (2019)
- Pereira et al. mitoTev-TALE: a monomeric DNA editing enzyme to reduce mutant mitochondrial DNA levels. *EMBO Molecular Medicine* (2018)

- Nguyen et al. FLT3 activating mutations display differential sensitivity to multiple tyrosine kinase inhibitors. *Oncotarget* (2017)
- Meyer et al. Adipocytes promote pancreatic cancer cell proliferation via glutamine transfer. *Biochemistry and Biophysics Reports* (2016)
- Wu JW et al. Neuronal activity enhances tau propagation and tau pathology in vivo. *Nat Neurosci.* (2016)
- Klammer M et al. Phosphosignature predicts dasatinib response in non-small cell lung cancer. *Mol Cell Proteomics.* (2012)

Disclaimer

This product is for research use only and is not intended for therapeutic or diagnostic applications. Please contact a technical service representative for more information. All products of animal origin manufactured by Rockland Immunochemicals are derived from starting materials of North American origin. Collection was performed in United States Department of Agriculture (USDA) inspected facilities and all materials have been inspected and certified to be free of disease and suitable for exportation. All properties listed are typical characteristics and are not specifications. All suggestions and data are offered in good faith but without guarantee as conditions and methods of use of our products are beyond our control. All claims must be made within 30 days following the date of delivery. The prospective user must determine the suitability of our materials before adopting them on a commercial scale. Suggested uses of our products are not recommendations to use our products in violation of any patent or as a license under any patent of Rockland Immunochemicals, Inc. If you require a commercial license to use this material and do not have one, then return this material, unopened to: Rockland Inc., P.O. BOX 5199, Limerick, Pennsylvania, USA.