

Datasheet for 611-103-122

Rabbit IgG (H&L) Secondary Antibody Peroxidase Conjugated Pre-adsorbed

Overview

| | |
|----------------------|---|
| Description: | Goat Anti-Rabbit IgG (H&L) Antibody Peroxidase Conjugated (Min X Bv Ch Gt GP Ham Hs Hu Ms Rt & Sh Serum Proteins) - 611-103-122 |
| Item No.: | 611-103-122 |
| Size: | 1 mg |
| Applications: | Dot Blot, ELISA, WB, IHC |
| Reactivity: | Rabbit |
| Host Species: | Goat |

Product Details

| | |
|----------------------|--|
| Background: | Goat anti-Rabbit IgG (H&L) Antibody Conjugated to Horseradish Peroxidase (HRP) is designed for chemiluminescent detection. Secondary antibodies bind to the primary antibody to assist in detection, sorting and purification of target antigens. To enable detection, the secondary antibody must have specificity for the antibody species and isotype of the primary antibody being used and generally is conjugated. This purified secondary antibody has been validated and optimized yielding good sensitivity and reproducible results with Rockland's primary antibodies. This anti-rabbit IgG antibody has been crossed adsorbed to show no reaction against Bovine, Chicken, Goat, Guinea Pig, Hamster, Horse, Human, Mouse, Rat and Sheep Serum Proteins. |
| Synonyms: | goat anti-rabbit hrp, HRP conjugated secondary antibody, goat anti-rabbit secondary antibody, goat anti-rabbit IgG peroxidase conjugated secondary |
| Host Species: | Goat |
| Specificity: | IgG (H&L) |
| Conjugate: | Peroxidase (HRP) |
| Clonality: | Polyclonal |
| Format: | IgG |
| F/P Ratio: | 0.440 |

Target Details

| | |
|----------------------------|--|
| Reactivity: | Rabbit |
| Immunogen: | Rabbit IgG whole molecule |
| Purity/Specificity: | Conjugated Second Antibody was prepared from monospecific antiserum by immunoaffinity chromatography using Rabbit IgG coupled to agarose beads followed by solid phase adsorption (s) to remove any unwanted reactivities. Assay by immunoelectrophoresis resulted in a single precipitin arc against anti-Peroxidase, anti-Goat Serum, Rabbit IgG and Rabbit Serum. No reaction was observed against Bovine, Chicken, Goat, Guinea Pig, Hamster, Horse, Human, Mouse, Rat and Sheep Serum Proteins. |
| Relevant Links: | <ul style="list-style-type: none">611-103-122 SDS |

Application Details

| | |
|--------------------------------|--|
| Tested Applications: | Dot Blot, ELISA, WB |
| Suggested Applications: | IHC (Based on references) |
| Application Note: | Anti-Rabbit secondary antibody conjugated to horseradish peroxidase (HRP) generated in goat detects specifically rabbit IgG. This anti-rabbit HRP mx10 secondary antibody has been tested in ELISA, Dot Blot, and Western Blot. Although not tested, this product could be useful for Sandwich ELISA, titration assays, immunoprecipitation, immunohistochemistry as well as other HRP antibody based assays. Specific conditions for reactivity and signal detection should be optimized by the end user. |
| Assay Dilutions: | All assays should be optimized by the user. Recommended dilutions (if any) may be listed below. |
| ELISA: | 1:20,000 - 1:100,000 |
| IHC: | 1:1,000 - 1:5,000 |
| WB: | 1:2,000 - 1:10,000 |

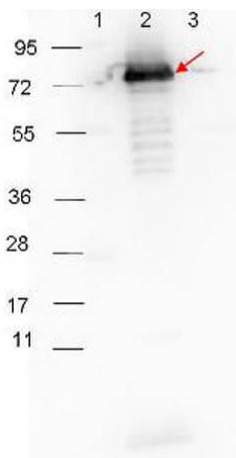
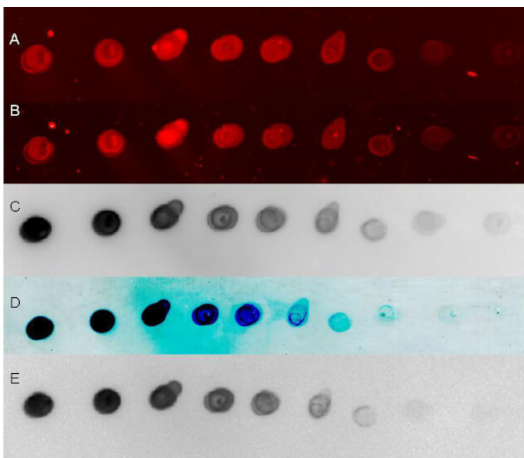
Formulation

| | |
|-------------------------------|--|
| Physical State: | Lyophilized |
| Concentration: | 2 mg/mL by UV absorbance at 280 nm |
| Buffer: | 0.02 M Potassium Phosphate, 0.15 M Sodium Chloride, pH 7.2 |
| Preservative: | 0.01% (w/v) Gentamicin Sulfate. Do NOT add Sodium Azide! |
| Stabilizer: | 10 mg/mL Bovine Serum Albumin (BSA) - Immunoglobulin and Protease free |
| Reconstitution Volume: | 1.0 mL |
| Reconstitution Buffer: | Restore with deionized water (or equivalent) |

Shipping & Handling

| | |
|----------------------------|---|
| Shipping Condition: | Ambient |
| Storage Condition: | Store secondary antibody at 4° C prior to restoration. For extended storage aliquot contents and freeze at -20° C or below. Avoid cycles of freezing and thawing. Centrifuge product if not completely clear after standing at room temperature. This product is stable for several weeks at 4° C as an undiluted liquid. Dilute only prior to immediate use. |
| Expiration: | Expiration date is one (1) year from date of receipt. |

Images

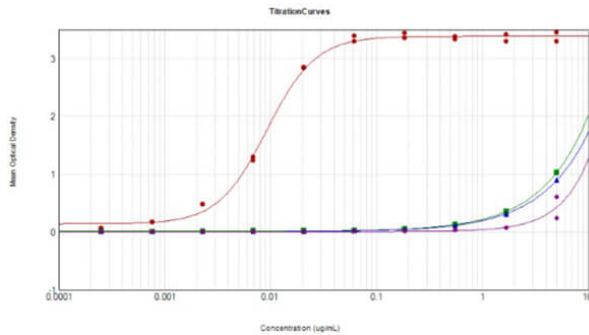


Dot Blot

Rockland secondary antibodies detect rabbit primary antibodies in a variety of platforms. Shown here is a serial 1:1 dilution of control rabbit IgG protein (011-0102, 250ng starting total load) co incubated with Rockland HRP conjugated Goat anti Rabbit IgG (611-103-122) and Dylight 649 conjugated goat anti Rabbit (611-143-122) 1:20K in MB-070. Blot was dried and imaged (A) on Biorad Versa Doc (30 sec, DyLight649), (B) LiCor Odyssey Reader (700 nm), (C) Rewetted incubated with Femtomax 110 reimaged using BioVersaDoc (for 60 sec), (D) Incubated with TMB substrate TMBM for 5 minutes and scanned, and (E) Rewetted for Chemiluminescence and imaged for 90 sec on the BioRad VersaDoc Imager,

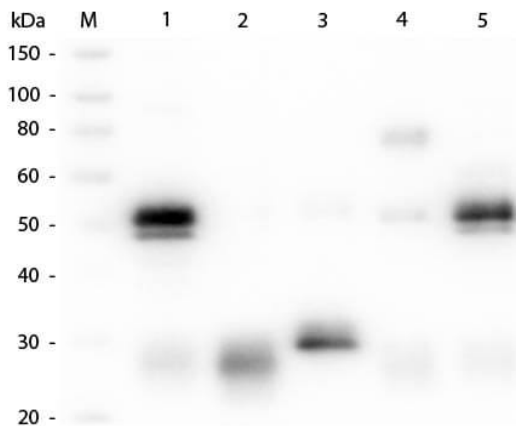
Western Blot

HRP-conjugated Goat-Anti-Rabbit (p/n 611-103-122) secondary antibody was used at 1:40,000 in MB-070 blocking buffer to detect a rabbit primary antibody by Western Blot. Anti-p27 antibody (200-401-C30, 1:1000 RT 30 minutes) showed detection of 0.1 µg of recombinant p27 protein. Lane 1: Molecular weight markers. Lane 2: MBP-p27 fusion protein (arrow; expected MW: 73.3 kDa). Lane 3: MBP alone. Protein was run on a 4-20% gel, then transferred to 0.45 µm nitrocellulose and blocked with 1% BSA-TTBS (p/n MB-013, diluted to 1X) overnight at 4°C. Blot was imaged on the VersaDoc MP 4000 imaging system (BioRad).



ELISA

ELISA Results of Goat Anti-Rabbit IgG Antibody Peroxidase Conjugated (Min X Bv, Ch, Gt, GP, Ham, Hs, Hu, Ms, Rt, Sh Serum Proteins) tested against purified Goat Anti-Rabbit IgG Antibody HRP Conjugated MX10. Each well was coated in duplicate with 10 µg of Rabbit IgG (p/n 011-0102) [Red Line], Bovine IgG (p/n 001-0102) [Green Line], Chicken IgG (p/n 003-0102) [Blue Line], Goat IgG (p/n 005-0102) [Purple Line], Guinea Pig, Hamster, Horse, Human, Mouse, Rat, and Sheep tested with similar results. The working dilution for Rabbit IgG is 1:109,000. The starting dilution of antibody was 5µg/ml and the X-axis represents the Log10 of a 3-fold dilution. This titration is a 4-parameter curve fit where the IC50 is defined as the titer of the antibody. Assay performed using 3% Fish Gel/PBS Blocking buffer (p/n MB-066), and TMB substrate (p/n TMBE-1000).



Western Blot

Western Blot of Unconjugated Anti-Rabbit IgG (H&L) (GOAT) Antibody (Min X Bv, Ch, Gt, GP, Ham, Hs, Hu, Ms, Rt & Sh Serum Proteins) (p/n 611-101-122). Lane M: 3 µl Molecular Ladder. Lane 1: Rabbit IgG whole molecule (p/n 011-0102). Lane 2: Rabbit IgG F(ab) Fragment (p/n 011-0105). Lane 3: Rabbit IgG F(c) Fragment (p/n 010-0103). Lane 4: Rabbit IgM Whole Molecule (p/n 011-0107). Lane 5: Normal Rabbit Serum (p/n B309). All samples were reduced. Load: 50 ng per lane. Block: MB-070 for 30 min at RT. Primary Antibody: Anti-Rabbit IgG (H&L) (GOAT) Antibody (Min X Bv, Ch, Gt, GP, Ham, Hs, Hu, Ms, Rt & Sh Serum Proteins) (p/n 611-101-122) 1:1,000 for 60 min at RT. Secondary antibody: Anti-Goat IgG (DONKEY) Peroxidase Conjugated Antibody (p/n CUST10) 1:40,000 in MB-070 for 30 min at RT. Predicted/Observed Size: 25 and 50 kDa for Rabbit IgG and Serum, 25 kDa for F(c) and F(ab), 70 and 23 kDa for IgM. Rabbit F(c) migrates slightly higher.

References

- Sophocleous RA et al. P2Y1 and P2Y12 Receptors Mediate Aggregation of Dog and Cat Platelets: A Comparison to Human Platelets. *Int J Mol Sci.* (2025)
- Chen F et al. TGF-β1-induced apoptosis in retinal endothelial cells is implicated in retinal vein occlusion. *Exp Eye Res.* (2025)
- Kobori Y et al. TMEM2 suppresses TLR3-mediated IFN-β/ISG56/CXCL10 expression in BEAS-2B bronchial epithelial cells. *Mol Biol Rep.* (2024)

- Fritz K et al. Hypercapnia Causes Injury of the Cerebral Cortex and Cognitive Deficits in Newborn Piglets. *eNeuro*. (2024)
- Wu HN et al. Identification of an endonuclease and N6-adenine methyltransferase from *Ureaplasma parvum* SV3F4 strain. *Enzyme Microb Technol*. (2024)
- Akiyama H et al. Novel IgE crosslinking-induced luciferase expression method using human-rat chimeric IgE receptor-carrying mast cells. *J Immunol Methods*. (2024)
- Muralidharan A et al. Malondialdehyde acetaldehyde adduction of surfactant protein D attenuates SARS-CoV-2 spike protein binding and virus neutralization. *Alcohol Clin Exp Res (Hoboken)*. (2023)
- Kelly M et al. Vaccination of Rabbits with a Cholera Conjugate Vaccine Comprising O-Specific Polysaccharide and a Recombinant Fragment of Tetanus Toxin Heavy Chain Induces Protective Immune Responses against *Vibrio cholerae* O1. *Am J Trop Med Hyg*. (2023)
- Schiffers C et al. Development of an Orthotopic HPV16-Dependent Base of Tongue Tumor Model in MHC-Humanized Mice. *Pathogens*. (2023)
- Barrera C et al. Effects on Fetal Metabolic Programming and Endocannabinoid System of a Normocaloric Diet during Pregnancy and Lactation of Female Mice with Pregestational Obesity. *Nutrients*. (2023)
- Wang W et al. Matrix stiffness regulates tumor cell intravasation through expression and ESRP1-mediated alternative splicing of MENA. *Cell Rep*. (2023)
- Fan J et al. Atorvastatin alleviates oxidative damage by activating the nuclear factor erythroid 2-related factor 2 pathway after brain ischemia in mice. *Ann Transl Med*. (2022)
- Wang W et al. Diabetic hyperglycemia promotes primary tumor progression through glycation-induced tumor extracellular matrix stiffening. *Sci Adv*. (2022)
- Saito S et al. Overexpressed angiotensin-converting enzyme in neutrophils suppresses glomerular damage in crescentic glomerulonephritis. *Am J Physiol Renal Physiol*. (2022)
- Rajib Ahmed et al. Large-Scale Functionalized Metasurface-Based SARS-CoV-2 Detection and Quantification. *ACS Nano*, (2022)
- Antonio Abad-Fuentes et al. Alternative Hapten Design for Zearalenone Immunoreagent Generation. *Toxins (Basel)*. (2022)
- Na Z et al. Phosphorylation of a Human Microprotein Promotes Dissociation of Biomolecular Condensates. *J Am Chem Soc*. (2021)
- Rantam FA et al. Characterization of SARS-CoV-2 East Java isolate, Indonesia. *F1000Res*. (2021)
- Ready DF et al. Calcium waves facilitate and coordinate the contraction of endfeet actin stress fibers in *Drosophila* interommatidial cells. *Development*. (2021)
- Kim MR et al. TET2 directs mammary luminal cell differentiation and endocrine response. *Nat Commun*. (2020)
- Tomaszewska E, Dobrowolski P, Świątkiewicz M, Donaldson J, Puzio I, Muszyński S. Is Dietary 2-Oxoglutaric Acid Effective in Accelerating Bone Growth and Development in Experimentally-Induced Intrauterine Growth Retarded Gilts? *Animals (Basel)*. (2020)
- Luo Y et al. Global profiling of cellular substrates of human Dcp2. *Biochemistry*. (2020)
- Na Z et al. The NBDY microprotein regulates cellular RNA decapping. *Biochemistry*. (2020)

- Luo Y et al. Discovery of cellular substrates of human RNA-decapping enzyme DCP2 using a stapled bicyclic peptide inhibitor. *Cell Chem Biol.* (2020)
- Sophocleous RA et al. Pharmacological and genetic characterisation of the canine P2X4 receptor. *Br J Pharmacol.* (2020)
- Brown et al. FOXP3 and miR-155 cooperate to control the invasive potential of human breast cancer cells by down regulating ZEB2 independently of ZEB1. *Oncotarget* (2018)
- Jeong YK et al. Docosahexaenoic acid inhibits cerulein-induced acute pancreatitis in rats. *Nutrients.* (2017)
- D'Lima et al. A human microprotein that interacts with the mRNA decapping complex. *Nature Chemical Biology* (2017)
- Ercan et al. Neuronal CTGF/CCN2 negatively regulates myelination in a mouse model of tuberous sclerosis complex. *Journal of Experimental Medicine* (2017)
- Bartlett et al. P2X7 antagonism using Brilliant Blue G reduces body weight loss and prolongs survival in female SOD1G93A amyotrophic lateral sclerosis mice. *PeerJ* (2017)
- Jong WS et al. Application of an E. coli signal sequence as a versatile inclusion body tag. *Microbial Cell Factories* (2017)
- Chen T et al. Aminoguanidine exhibits an inhibitory effect on β -amyloid-induced damage in F98 glioma cells. *Mol Med Rep.* (2017)
- Lampi et al. Simvastatin Ameliorates Matrix Stiffness-Mediated Endothelial Monolayer Disruption. *PLOS One* (2016)
- Dickerman et al. The protein activator of protein kinase R, PACT/RAX, negatively regulates protein kinase R during mouse anterior pituitary development. *The FEBS Journal* (2015)
- Dickerman BK et al. The Human dsRNA binding protein PACT is unable to functionally substitute for the Drosophila dsRNA binding protein R2D2. *F1000Res.* (2013)
- Horn P et al. Circulating microparticles carry a functional endothelial nitric oxide synthase that is decreased in patients with endothelial dysfunction. *J Am Heart Assoc.* (2012)
- Pop V et al. A β aggregation profiles and shifts in APP processing favor amyloidogenesis in canines. *Neurobiology of Aging* (2012)
- Niedowicz DM et al. APP(DeltaNL695) expression in murine tissue downregulates CNBP expression. *Neuroscience Letters* (2010)
- Pop V et al. Synergistic effects of long-term antioxidant diet and behavioral enrichment on beta-amyloid load and non-amyloidogenic processing in aged canines. *The Journal of Neuroscience : the Official Journal of the Society for Neuroscience* (2010)
- Fritz KI et al. The effect of hypocapnia (PaCO₂ 27 mmHg) on CaM kinase IV activity, Bax/Bcl-2 protein expression and DNA fragmentation in the cerebral cortex of newborn piglets. *Neurosci Lett.* (2003)
- Shah K et al. A chemical genetic screen for direct v-Src substrates reveals ordered assembly of a retrograde signaling pathway. *Chem Biol.* (2002)

Disclaimer

This product is for research use only and is not intended for therapeutic or diagnostic applications. Please contact a technical service representative for more information. All products of animal origin manufactured by Rockland Immunochemicals are derived from starting materials of North American origin. Collection was performed in United States Department of Agriculture (USDA) inspected facilities and all materials have been inspected and certified to be free of disease and suitable for exportation. All properties listed are typical characteristics and are not specifications. All suggestions and data are offered in good faith but without guarantee as conditions and methods of use of our products are beyond our control. All claims must be made within 30 days following the date of delivery. The prospective user must determine the suitability of our materials before adopting them on a commercial scale. Suggested uses of our products are not recommendations to use our products in violation of any patent or as a license under any patent of Rockland Immunochemicals, Inc. If you require a commercial license to use this material and do not have one, then return this material, unopened to: Rockland Inc., P.O. BOX 5199, Limerick, Pennsylvania, USA.