

Datasheet for 610-4940

Mouse IgG1 (Gamma 1 chain) Antibody Texas Red™ Conjugated**Overview**

Description:	Rabbit Anti-Mouse IgG1 (Gamma 1 chain) Antibody Texas Red™ Conjugated - 610-4940
Item No.:	610-4940
Size:	1 mg
Applications:	Dot Blot, WB, IF, Multiplex
Reactivity:	Mouse
Host Species:	Rabbit

Product Details

Background:	Anti-Mouse IgG1 Texas Red Antibody generated in rabbit detects reactivity to Mouse IgG1 (Gamma 1 chain). Secreted as part of the adaptive immune response by plasma B cells, immunoglobulin G constitutes 75% of serum immunoglobulins. IgG1 chain constitutes 66% of the IgG subclass and has a high affinity for binding to the Fc receptor of phagocytic cells. Secondary Antibodies are available in a variety of formats and conjugate types. When choosing a secondary antibody product, consideration must be given to species and immunoglobulin specificity, conjugate type, fragment and chain specificity, level of cross-reactivity, and host-species source and fragment composition.
Synonyms:	Rabbit Anti-Mouse IgG1 (Gamma 1 chain) Antibody Texas Red™ Conjugation, Rabbit Anti-Mouse IgG1 Texas Red™ Conjugated Antibody
Host Species:	Rabbit
Specificity:	IgG1
Conjugate:	Texas Red®
Clonality:	Polyclonal
Format:	IgG
F/P Ratio:	2.2

Target Details

Reactivity:	Mouse
--------------------	-------

Immunogen:	Mouse IgG1 heavy chain
Purity/Specificity:	This product was prepared from monospecific antiserum by immunoaffinity chromatography using Mouse antigens coupled to agarose beads followed by solid phase adsorption(s) to remove any unwanted reactivities. Assay by immunoelectrophoresis resulted in a single precipitin arc against anti-Rabbit Serum, Mouse IgG and Mouse Serum. Specificity was confirmed by ELISA at less than 1% cross reactivity against other mouse heavy or light chain isotypes.

Application Details

Tested Applications:	Dot Blot, WB
Suggested Applications:	IF, Multiplex (Based on references)
Application Note:	Anti-Mouse IgG1 Texas Red Antibody has been tested by dot blot and western blot and is designed for immunofluorescence microscopy, fluorescence based plate assays (FLISA) and fluorescent western blotting. This product is also suitable for multiplex analysis, including multicolor imaging, utilizing various commercial platforms.
Assay Dilutions:	All assays should be optimized by the user. Recommended dilutions (if any) may be listed below.
FC:	1:500 - 1:2,500
FLISA:	1:10,000 - 1:50,000
IF:	1:1,000 - 1:5,000

Formulation

Physical State:	Lyophilized
Concentration:	1.0 mg/mL by UV absorbance at 280 nm
Buffer:	0.02 M Potassium Phosphate, 0.15 M Sodium Chloride, pH 7.2
Preservative:	0.01% (w/v) Sodium Azide
Stabilizer:	10 mg/mL Bovine Serum Albumin (BSA) - Immunoglobulin and Protease free
Reconstitution Volume:	1.0 mL
Reconstitution Buffer:	Restore with deionized water (or equivalent)

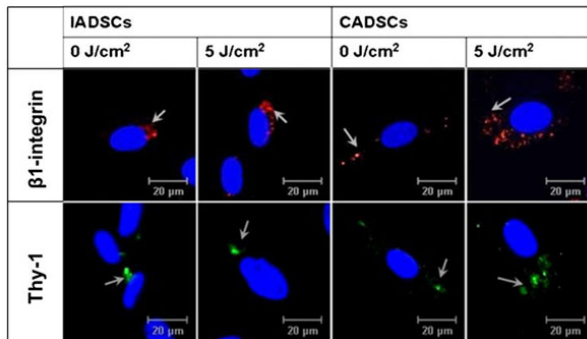
Shipping & Handling

Shipping Condition:	Ambient
----------------------------	---------

Storage Condition: Store vial at 4° C prior to restoration. For extended storage aliquot contents and freeze at -20° C or below. Avoid cycles of freezing and thawing. Centrifuge product if not completely clear after standing at room temperature. This product is stable for several weeks at 4° C as an undiluted liquid. Dilute only prior to immediate use.

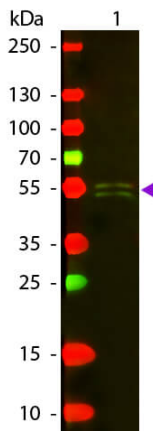
Expiration: Expiration date is one (1) year from date of receipt.

Images



Immunofluorescence Microscopy

Expression of β1-integrin (red, Texas Red Conjugated anti-Mouse IgG1, γ1 chain specific, p/n 610–4940) and Thy-1 (green) in isolated (IADSCs) and commercial (CADSCs) hADSCs 72 h post incubation. Nuclei were counter stained with DAPI (blue). Non-irradiated (0 J/cm²) isolated and commercial hADSCs showed expression of β1-integrin, and Thy-1, as did irradiated (5 J/cm²) hADSCs. Fig 2. PMID: 21373882.



Western Blot

Western blot of Texas Red™ conjugated Rabbit Anti-Mouse IgG1 (Gamma 1 chain) secondary antibody. Lane 1: Mouse IgG1. Lane 2: None. Load: 50 ng per lane. Primary antibody: None. Secondary antibody: Texas Red™ rabbit secondary antibody at 1:1,000 for 60 min at RT. Blocking: MB-070 for 30 min at RT. Predicted/Observed size: 55 kDa, 55 kDa for Mouse IgG1 (Gamma 1 chain). Other band(s): None.

References

- de Villers JA et al. Influence of low intensity laser irradiation on isolated human adipose derived stem cells over 72 hours and their differentiation potential into smooth muscle cells using retinoic acid. *Stem Cell Rev Rep.* (2011)

Disclaimer

This product is for research use only and is not intended for therapeutic or diagnostic applications. Please contact a technical service representative for more information. All products of animal origin manufactured by Rockland Immunochemicals are derived from starting materials of North American origin. Collection was performed in United States Department of Agriculture (USDA) inspected facilities and all materials have been inspected and certified to be free of disease and suitable for exportation. All properties listed are typical characteristics and are not specifications. All suggestions and data are offered in good faith but without guarantee as conditions and methods of use of our products are beyond our control. All claims must be made within 30 days following the date of delivery. The prospective user must determine the suitability of our materials before adopting them on a commercial scale. Suggested uses of our products are not recommendations to use our products in violation of any patent or as a license under any patent of Rockland Immunochemicals, Inc. If you require a commercial license to use this material and do not have one, then return this material, unopened to: Rockland Inc., P.O. BOX 5199, Limerick, Pennsylvania, USA.