

Datasheet for 610-443-041

## Mouse IgG2a (Gamma 2a chain) Antibody DyLight™ 649 Conjugated

### Overview

<b>Description:</b>	Rabbit Anti-Mouse IgG2a (Gamma 2a chain) Antibody DyLight™ 649 Conjugated - 610-443-041
<b>Item No.:</b>	610-443-041
<b>Size:</b>	100 µg
<b>Reactivity:</b>	Mouse
<b>Host Species:</b>	Rabbit

### Product Details

<b>Background:</b>	Anti-Mouse IgG2a DyLight 649 Antibody generated in rabbit detects reactivity to Mouse IgG2a (Gamma 2a chain). Secreted as part of the adaptive immune response by plasma B cells, immunoglobulin G constitutes 75% of serum immunoglobulins. IgG2, the second largest of IgG isotypes, comprises almost 25% of IgG and has a low affinity for binding to the Fc receptor of phagocytic cells. Secondary Antibodies are available in a variety of formats and conjugate types. When choosing a secondary antibody product, consideration must be given to species and immunoglobulin specificity, conjugate type, fragment and chain specificity, level of cross-reactivity, and host-species source and fragment composition.
<b>Synonyms:</b>	Rabbit Anti-Mouse IgG2a (Gamma 2a chain) Antibody DyLight 649™ Conjugated, Rabbit Anti Mouse IgG2a DyLight 649™ Conjugated Antibody
<b>Host Species:</b>	Rabbit
<b>Specificity:</b>	IgG2a
<b>Conjugate:</b>	DyLight™ 649
<b>Clonality:</b>	Polyclonal
<b>Format:</b>	IgG
<b>F/P Ratio:</b>	3.2

### Target Details

<b>Reactivity:</b>	Mouse
<b>Immunogen:</b>	Mouse IgG2a heavy chain

**Purity/Specificity:** This product was prepared from monospecific antiserum by immunoaffinity chromatography using antigens coupled to agarose beads followed by solid phase adsorption(s) to remove any unwanted reactivities. Assay by immunoelectrophoresis resulted in a single precipitin arc against anti-Rabbit Serum, Mouse IgG and Mouse Serum. Minimal cross reactivity was noted against other Mouse immunoglobulin classes or subclasses.

## Application Details

**Application Note:** This product is designed for immunofluorescence microscopy, fluorescence based plate assays (FLISA) and fluorescent western blotting. This product is also suitable for multiplex analysis, including multicolor imaging, utilizing various commercial platforms. The emission spectra for this DyLight™ conjugate match the principle output wavelengths of most common fluorescence instrumentation.

**Assay Dilutions:** All assays should be optimized by the user. Recommended dilutions (if any) may be listed below.

**FLISA:** >1:20,000

**IF:** >1:5,000

**WB:** >1:10,000

## Formulation

**Physical State:** Lyophilized

**Concentration:** 1.0 mg/mL by UV absorbance at 280 nm

**Buffer:** 0.02 M Potassium Phosphate, 0.15 M Sodium Chloride, pH 7.2

**Preservative:** 0.01% (w/v) Sodium Azide

**Stabilizer:** 10 mg/mL Bovine Serum Albumin (BSA) - Immunoglobulin and Protease free

**Reconstitution Volume:** 100 µL

**Reconstitution Buffer:** Restore with deionized water (or equivalent)

## Shipping & Handling

**Shipping Condition:** Ambient







**Storage Condition:** Store vial at 4° C prior to restoration. For extended storage aliquot contents and freeze at -20° C or below. Avoid cycles of freezing and thawing. Centrifuge product if not completely clear after standing at room temperature. This product is stable for several weeks at 4° C as an undiluted liquid. Dilute only prior to immediate use.

**Expiration:** Expiration date is one (1) year from date of receipt.

## Images

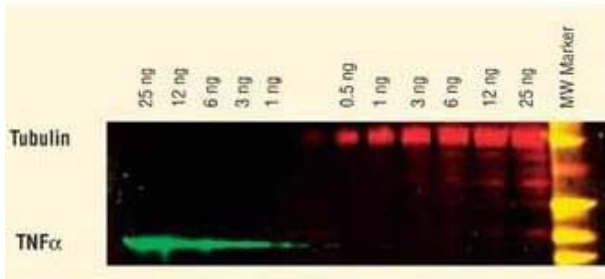
### Diagram

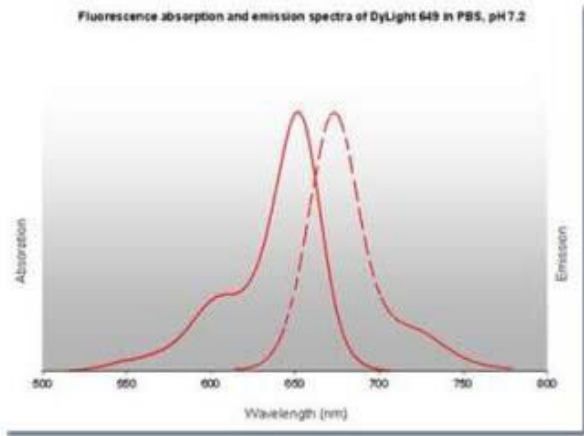
Properties of DyLight™ Conjugates.

Emission	Color	DyLight™ Dye	Ex/Em (nm)	$\epsilon$ (M <sup>-1</sup> cm <sup>-1</sup> )	Similar Dyes
Blue		405	400/420	30,000	Alexa™ 405, Cascade Blue
Green		488	493/518	70,000	Alexa™ 488, Cy2®, FITC
Yellow		549	550/568	150,000	Alexa™ 546, Alexa 555, Cy3®, TRITC
Red		649	646/674	250,000	Alexa™ 647, Cy5®
Near Infrared		680	682/715	140,000	Alexa™ 680, Cy5.5®, IRDye™ 700
Infrared		800	770/794	270,000	IRDye™ 800

### Western Blot

DyLight™ dyes can be used for two-color Western Blot detection with low background and high signal. Anti-tubulin was detected using a DyLight™ 549 conjugate. Anti-TNF $\alpha$  was detected using a DyLight™ 649 conjugate. The image was captured using the Typhoon™ 9410 Imaging System.



**Diagram**

## Disclaimer

This product is for research use only and is not intended for therapeutic or diagnostic applications. Please contact a technical service representative for more information. All products of animal origin manufactured by Rockland Immunochemicals are derived from starting materials of North American origin. Collection was performed in United States Department of Agriculture (USDA) inspected facilities and all materials have been inspected and certified to be free of disease and suitable for exportation. All properties listed are typical characteristics and are not specifications. All suggestions and data are offered in good faith but without guarantee as conditions and methods of use of our products are beyond our control. All claims must be made within 30 days following the date of delivery. The prospective user must determine the suitability of our materials before adopting them on a commercial scale. Suggested uses of our products are not recommendations to use our products in violation of any patent or as a license under any patent of Rockland Immunochemicals, Inc. If you require a commercial license to use this material and do not have one, then return this material, unopened to: Rockland Inc., P.O. BOX 5199, Limerick, Pennsylvania, USA.