

Datasheet for 610-4241

Mouse IgG2a (Gamma 2a chain) Antibody Fluorescein Conjugated

Overview

Description:	Rabbit Anti-Mouse IgG2a (Gamma 2a chain) Antibody Fluorescein Conjugated - 610-4241
Item No.:	610-4241
Size:	1 mg
Applications:	Dot Blot, WB
Reactivity:	Mouse
Host Species:	Rabbit

Product Details

Background:	Anti-Mouse IgG2a Fluorescein Antibody generated in rabbit detects reactivity to Mouse IgG2a (Gamma 2a chain). Secreted as part of the adaptive immune response by plasma B cells, immunoglobulin G constitutes 75% of serum immunoglobulins. IgG2, the second largest of IgG isotypes, comprises almost 25% of IgG and has a low affinity for binding to the Fc receptor of phagocytic cells. Secondary Antibodies are available in a variety of formats and conjugate types. When choosing a secondary antibody product, consideration must be given to species and immunoglobulin specificity, conjugate type, fragment and chain specificity, level of cross-reactivity, and host-species source and fragment composition.
Synonyms:	Rabbit Anti-Mouse IgG2a (gamma 2a chain) Antibody fluorescein Conjugated, Rabbit Anti-Mouse IgG2a Antibody FITC Conjugation
Host Species:	Rabbit
Specificity:	IgG2a
Conjugate:	Fluorescein (FITC)
Clonality:	Polyclonal
Format:	IgG
F/P Ratio:	3.7

Target Details

Reactivity:	Mouse
--------------------	-------

Immunogen:	Mouse IgG2a heavy chain
Purity/Specificity:	This product was prepared from monospecific antiserum by immunoaffinity chromatography using Mouse IgG2a coupled to agarose beads followed by solid phase adsorption(s) against a panel of immobilized mouse and human serum proteins resulting in a conjugated antibody designed for flow cytometry. Assay by immunoelectrophoresis resulted in a single precipitin arc against anti-Fluorescein, anti-Rabbit Serum, Mouse IgG and Mouse Serum. Specificity was confirmed by ELISA.

Application Details

Tested Applications:	Dot Blot, WB
Application Note:	Anti-Mouse IgG2a Fluorescein Antibody has been tested by dot blot and western blot and is designed for immunofluorescence microscopy, fluorescence based plate assays (FLISA) and fluorescent western blotting. This product is also suitable for multiplex analysis, including multicolor imaging, utilizing various commercial platforms.
Assay Dilutions:	All assays should be optimized by the user. Recommended dilutions (if any) may be listed below.
FC:	1:500 - 1:2,500
FLISA:	1:10,000 - 1:50,000
IF:	1:1,000 - 1:5,000

Formulation

Physical State:	Lyophilized
Concentration:	1.0 mg/mL by UV absorbance at 280 nm
Buffer:	0.02 M Potassium Phosphate, 0.15 M Sodium Chloride, pH 7.2
Preservative:	0.01% (w/v) Sodium Azide
Stabilizer:	10 mg/mL Bovine Serum Albumin (BSA) - Immunoglobulin and Protease free
Reconstitution Volume:	1.0 mL
Reconstitution Buffer:	Restore with deionized water (or equivalent)

Shipping & Handling

Shipping Condition:	Ambient
----------------------------	---------

Storage Condition: Store vial at 4° C prior to restoration. For extended storage aliquot contents and freeze at -20° C or below. Avoid cycles of freezing and thawing. Centrifuge product if not completely clear after standing at room temperature. This product is stable for several weeks at 4° C as an undiluted liquid. Dilute only prior to immediate use.

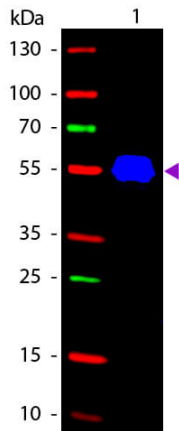
Expiration: Expiration date is one (1) year from date of receipt.

Images



Dot Blot

Dot Blot results of Rabbit Anti-Mouse IgG2a Antibody Fluorescein Conjugated. Dots are Mouse IgG2a at (1) 100ng, (2) 33.3ng, (3) 11.1ng, (4) 3.70ng, (5) 1.23ng. Blocking: MB-070 for 30 min at RT. Primary Antibody: Rabbit Anti-Mouse IgG2a FITC at 1µg/mL for 1hr at RT. Secondary Antibody: none. Imaged with BioRad ChemiDoc, FITC filter.



Western Blot

Western blot of Fluorescein conjugated Rabbit Anti-Mouse IgG2a (Gamma 2a chain) secondary antibody. Lane 1: Mouse IgG2a. Lane 2: None. Load: 50 ng per lane. Primary antibody: None. Secondary antibody: Fluorescein rabbit secondary antibody at 1:1,000 for 60 min at RT. Blocking: MB-070 for 30 min at RT. Predicted/Observed size: 55 kDa, 55 kDa for Mouse IgG2a (Gamma 2a chain). Other band(s): None.

Disclaimer

This product is for research use only and is not intended for therapeutic or diagnostic applications. Please contact a technical service representative for more information. All products of animal origin manufactured by Rockland Immunochemicals are derived from starting materials of North American origin. Collection was performed in United States Department of Agriculture (USDA) inspected facilities and all materials have been inspected and certified to be free of disease and suitable for exportation. All properties listed are typical characteristics and are not specifications. All suggestions and data are offered in good faith but without guarantee as conditions and methods of use of our products are beyond our control. All claims must be made within 30 days following the date of delivery. The prospective user must determine the suitability of our materials before adopting them on a commercial scale. Suggested uses of our products are not recommendations to use our products in violation of any patent or as a license under any patent of Rockland Immunochemicals, Inc. If you require a commercial license to use this material and do not have one, then return this material, unopened to: Rockland Inc., P.O. BOX 5199, Limerick, Pennsylvania, USA.