

Datasheet for 610-143-007

## Mouse IgM (mu chain) Antibody DyLight™ 649 Conjugated

### Overview

|                      |   |
|----------------------|---|
| <b>Description:</b>  | Goat Anti-Mouse IgM (mu chain) Antibody DyLight™ 649 Conjugated - 610-143-007 |
| <b>Item No.:</b>     | 610-143-007   |
| <b>Size:</b>         | 100 µg  |
| <b>Reactivity:</b>   | Mouse   |
| <b>Host Species:</b> | Goat  |

### Product Details

|                      |   |
|----------------------|---|
| <b>Background:</b>   | Anti-Mouse IgM DyLight antibody specifically detects mouse IgM. Immunoglobulin M is the largest antibody isotype and the first to be secreted against an initial exposure to antigen. IgM is predominantly produced in the spleen. Formed from covalently linking 5 immunoglobulins together, the approximate molecular weight of IgM is 900kDa and possesses 10 binding sites (though due to the size of most antigens, not all sites are capable of binding at once). Due to this large size, IgM is typically isolated to the serum. Anti-Mouse IgM antibody is ideal for investigators in Immunology, Microbiology, and Cell Biology. |
| <b>Synonyms:</b>     | Goat Anti-Mouse IgM (mu chain) Antibody DyLight 649™ Conjugated, Goat Anti Mouse IgM mu chain DyLight 649™ Conjugated Antibody  |
| <b>Host Species:</b> | Goat  |
| <b>Specificity:</b>  | IgM µ chain   |
| <b>Conjugate:</b>    | DyLight™ 649  |
| <b>Clonality:</b>    | Polyclonal  |
| <b>Format:</b>       | IgG   |
| <b>F/P Ratio:</b>    | 1.8   |

### Target Details

|                    |                          |
|--------------------|--------------------------|
| <b>Reactivity:</b> | Mouse                    |
| <b>Immunogen:</b>  | Mouse IgM whole molecule |

**Purity/Specificity:** This product was prepared from monospecific antiserum by immunoaffinity chromatography using Mouse IgM coupled to agarose beads followed by solid phase adsorption(s) to remove any unwanted reactivities. Assay by immunoelectrophoresis resulted in a single precipitin arc against anti-Goat Serum, Mouse IgM and Mouse Serum. No reaction was observed against other mouse heavy or light chain proteins.

## Application Details

**Application Note:** The emission spectra for this DyLight™ conjugate match the principle output wavelengths of most common fluorescence instrumentation. This product is designed for immunofluorescence microscopy, fluorescence based plate assays (FLISA) and fluorescent western blotting. This product is also suitable for multiplex analysis, including multicolor imaging, utilizing various commercial platforms.

**Assay Dilutions:** All assays should be optimized by the user. Recommended dilutions (if any) may be listed below.

**FLISA:** >1:20,000

**IF:** >1:5,000

**WB:** >1:10,000

## Formulation

**Physical State:** Lyophilized

**Concentration:** 1.0 mg/mL by UV absorbance at 280 nm

**Buffer:** 0.02 M Potassium Phosphate, 0.15 M Sodium Chloride, pH 7.2

**Preservative:** 0.01% (w/v) Sodium Azide

**Stabilizer:** 10 mg/mL Bovine Serum Albumin (BSA) - Immunoglobulin and Protease free

**Reconstitution Volume:** 100 µL

**Reconstitution Buffer:** Restore with deionized water (or equivalent)

## Shipping & Handling

**Shipping Condition:** Ambient







**Storage Condition:** Store vial at 4° C prior to restoration. For extended storage aliquot contents and freeze at -20° C or below. Avoid cycles of freezing and thawing. Centrifuge product if not completely clear after standing at room temperature. This product is stable for several weeks at 4° C as an undiluted liquid. Dilute only prior to immediate use.

**Expiration:** Expiration date is one (1) year from date of receipt.

## Images

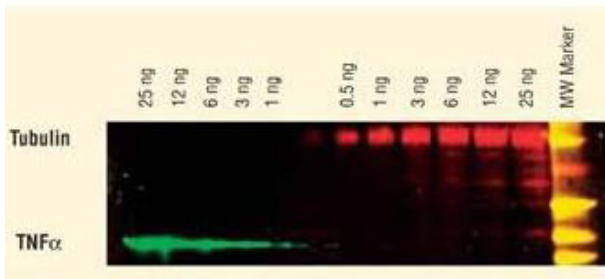
### Diagram

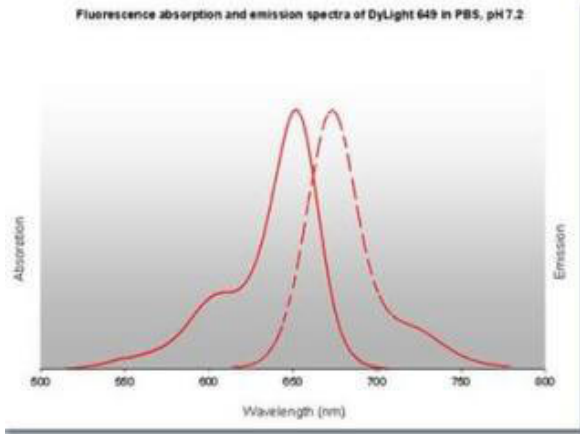
Properties of DyLight™ Conjugates.

| Emission      | Color   | DyLight™ Dye | Ex/Em (nm) | $\epsilon$ (M <sup>-1</sup> cm <sup>-1</sup> ) | Similar Dyes                       |
|---------------|---|--------------|------------|--|------------------------------------|
| Blue          |  | 405          | 400/420    | 30,000   | Alexa™ 405, Cascade Blue           |
| Green         |  | 488          | 493/518    | 70,000   | Alexa™ 488, Cy2®, FITC             |
| Yellow        |  | 549          | 550/568    | 150,000  | Alexa™ 546, Alexa 555, Cy3®, TRITC |
| Red           |  | 649          | 646/674    | 250,000  | Alexa™ 647, Cy5®                   |
| Near Infrared |  | 680          | 682/715    | 140,000  | Alexa™ 680, Cy5.5®, IRDye™ 700     |
| Infrared      |  | 800          | 770/794    | 270,000  | IRDye™ 800                         |

### Western Blot

DyLight™ dyes can be used for two-color Western Blot detection with low background and high signal. Anti-tubulin was detected using a DyLight™ 549 conjugate. Anti-TNF $\alpha$  was detected using a DyLight™ 649 conjugate. The image was captured using the Typhoon™ 9410 Imaging System.



**Diagram**

## Disclaimer

This product is for research use only and is not intended for therapeutic or diagnostic applications. Please contact a technical service representative for more information. All products of animal origin manufactured by Rockland Immunochemicals are derived from starting materials of North American origin. Collection was performed in United States Department of Agriculture (USDA) inspected facilities and all materials have been inspected and certified to be free of disease and suitable for exportation. All properties listed are typical characteristics and are not specifications. All suggestions and data are offered in good faith but without guarantee as conditions and methods of use of our products are beyond our control. All claims must be made within 30 days following the date of delivery. The prospective user must determine the suitability of our materials before adopting them on a commercial scale. Suggested uses of our products are not recommendations to use our products in violation of any patent or as a license under any patent of Rockland Immunochemicals, Inc. If you require a commercial license to use this material and do not have one, then return this material, unopened to: Rockland Inc., P.O. BOX 5199, Limerick, Pennsylvania, USA.