

**Datasheet for 610-1303****Mouse IgG Fc Antibody Peroxidase Conjugated****Overview**

<b>Description:</b>	Goat Anti-Mouse IgG Fc Antibody Peroxidase Conjugated - 610-1303
<b>Item No.:</b>	610-1303
<b>Size:</b>	2 mg
<b>Applications:</b>	ELISA, WB
<b>Reactivity:</b>	Mouse
<b>Host Species:</b>	Goat

**Product Details**

<b>Background:</b>	Anti-Mouse IgG F(c) generated in goat is a proteolytic fragment of immunoglobulin G (IgG) obtained by limited digestion with the enzyme papain under controlled conditions of temperature, time and pH. Receptors bind the Fc portion of mouse IgG and often this fragment is removed from immunoglobulins to minimize receptor binding and lower background reactivity.
<b>Synonyms:</b>	Goat Anti-Mouse IgG F(c) peroxidase Conjugated Antibody, Goat Anti-Mouse IgG Fc Antibody peroxidase Conjugation, Goat Anti-Mouse IgG Fc Fragment Antibody HRP Conjugated
<b>Host Species:</b>	Goat
<b>Specificity:</b>	IgG Fc
<b>Conjugate:</b>	Peroxidase (HRP)
<b>Clonality:</b>	Polyclonal
<b>Format:</b>	IgG

**Target Details**

<b>Reactivity:</b>	Mouse
<b>Immunogen Type:</b>	Native Protein
<b>Immunogen:</b>	Anti-Mouse IgG F(c) fragment was produced by repeated immunization with Mouse IgG F(c) fragment in goat.

**Purity/Specificity:** This product was prepared from monospecific antiserum by immunoaffinity chromatography using Mouse IgG coupled to agarose. Assay by immunoelectrophoresis resulted in a single precipitin arc against anti-Peroxidase, anti-Goat Serum, Mouse IgG, Mouse IgG F(c) and Mouse Serum. No reaction was observed against Mouse IgG F(ab')<sub>2</sub> fragment.

## Application Details

**Tested Applications:** ELISA, WB

**Application Note:** Anti-Mouse IgG F(c) fragment Peroxidase conjugated Antibody has been tested by ELISA and western blot and is suitable for use in immunoelectrophoresis, western-blot, competitive western-blot, ELISA and competitive ELISA assays. Specific conditions for reactivity and signal detection should be optimized by the end user.

**Assay Dilutions:** All assays should be optimized by the user. Recommended dilutions (if any) may be listed below.

**ELISA:** 1:10,000 - 1:50,000

**IHC:** 1:500 - 1:2,500

**WB:** 1:1,000 - 1:5,000

## Formulation

**Physical State:** Lyophilized

**Concentration:** 2.0 mg/mL by UV absorbance at 280 nm

**Buffer:** 0.02 M Potassium Phosphate, 0.15 M Sodium Chloride, pH 7.2

**Preservative:** 0.01% (w/v) Gentamicin Sulfate. Do NOT add Sodium Azide!

**Stabilizer:** 10 mg/mL Bovine Serum Albumin (BSA) - Immunoglobulin and Protease free

**Reconstitution Volume:** 1.0 mL

**Reconstitution Buffer:** Restore with deionized water (or equivalent)

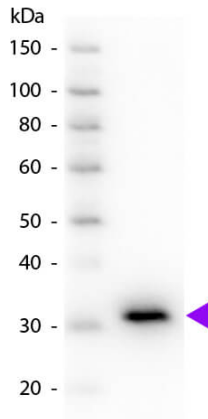
## Shipping & Handling

**Shipping Condition:** Ambient

**Storage Condition:** Store vial at 4° C prior to restoration. For extended storage aliquot contents and freeze at -20° C or below. Avoid cycles of freezing and thawing. Centrifuge product if not completely clear after standing at room temperature. This product is stable for several weeks at 4° C as an undiluted liquid. Dilute only prior to immediate use.

**Expiration:** Expiration date is one (1) year from date of receipt.

## Images



### Western Blot

Western blot of Peroxidase conjugated Goat Anti-Mouse IgG F(c) secondary antibody. Lane 1: Mouse IgG F(c). Lane 2: None. Load: 50 ng per lane. Primary antibody: None. Secondary antibody: Peroxidase goat secondary antibody at 1:1,000 for 60 min at RT. Blocking: MB-070 for 30 min at RT. Predicted/Observed size: 28 kDa, 31 kDa for Mouse IgG F(c). Other band(s): None.

## Disclaimer

This product is for research use only and is not intended for therapeutic or diagnostic applications. Please contact a technical service representative for more information. All products of animal origin manufactured by Rockland Immunochemicals are derived from starting materials of North American origin. Collection was performed in United States Department of Agriculture (USDA) inspected facilities and all materials have been inspected and certified to be free of disease and suitable for exportation. All properties listed are typical characteristics and are not specifications. All suggestions and data are offered in good faith but without guarantee as conditions and methods of use of our products are beyond our control. All claims must be made within 30 days following the date of delivery. The prospective user must determine the suitability of our materials before adopting them on a commercial scale. Suggested uses of our products are not recommendations to use our products in violation of any patent or as a license under any patent of Rockland Immunochemicals, Inc. If you require a commercial license to use this material and do not have one, then return this material, unopened to: Rockland Inc., P.O. BOX 5199, Limerick, Pennsylvania, USA.