

Datasheet for 610-103-115

Mouse IgG + IgM (H&L) Antibody Peroxidase Conjugated Pre-Adsorbed

Overview

Description:	Goat Anti-Mouse IgG + IgM (H&L) Antibody Peroxidase Conjugated (Min X to Bv Hs & Hu Serum Proteins) - 610-103-115
Item No.:	610-103-115
Size:	1 mg
Applications:	ELISA
Reactivity:	Mouse
Host Species:	Goat

Product Details

Background:	Anti-Mouse IgG and IgM whole molecule peroxidase conjugated antibody generated in goat detects specifically Mouse IgG and IgM whole molecule. This secondary peroxidase conjugated antibody anti-mouse is ideal for investigators who routinely perform titration assays, western-blot, immunoprecipitation and more generally immunoassays.
Synonyms:	Mouse IgG and IgM whole molecule Antibody, Gt-a-Mouse IgG and IgM whole molecule Peroxidase conjugated, Mouse IgG and IgM whole molecule Peroxidase Antibody in goat, Mouse IgG and IgM whole molecules peroxidase conjugated Secondary Antibody.
Host Species:	Goat
Specificity:	IgG + IgM (H&L)
Conjugate:	Peroxidase (HRP)
Clonality:	Polyclonal
Format:	IgG

Target Details

Reactivity:	Mouse
Immunogen Type:	Native Protein

Immunogen:	Anti-Mouse IgG and IgM whole molecule was produced by repeated immunization with Mouse IgG and IgM whole molecule in goat.
Purity/Specificity:	This product was prepared from polyspecific antiserum by immunoaffinity chromatography using antigens coupled to agarose beads followed by solid phase adsorption(s) to remove any unwanted reactivities. Assay by immunoelectrophoresis resulted in a single precipitin arc against No reaction was observed against bovine, horse or human serum proteins.

Application Details

Tested Applications:	ELISA
Application Note:	Anti-Mouse IgG and IgM Peroxidase conjugated antibody has been tested by ELISA and is suitable for highly specific immunological methods requiring extremely low background levels, lot-to-lot consistency, high titer and specificity.
Assay Dilutions:	All assays should be optimized by the user. Recommended dilutions (if any) may be listed below.
ELISA:	1:40,000
IHC:	1:500 - 1:2,500
WB:	1:2,000 - 1:10,000

Formulation

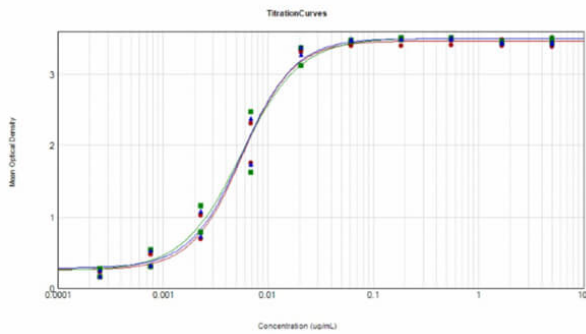
Physical State:	Lyophilized
Concentration:	1.0 mg/mL by UV absorbance at 280 nm
Buffer:	0.02 M Potassium Phosphate, 0.15 M Sodium Chloride, pH 7.2
Preservative:	0.01% (w/v) Gentamicin Sulfate. Do NOT add Sodium Azide!
Stabilizer:	10 mg/mL Bovine Serum Albumin (BSA) - Immunoglobulin and Protease free
Reconstitution Volume:	1.0 mL
Reconstitution Buffer:	Restore with deionized water (or equivalent)

Shipping & Handling

Shipping Condition:	Ambient
----------------------------	---------

Storage Condition:	Store vial at 4° C prior to restoration. For extended storage aliquot contents and freeze at -20° C or below. Avoid cycles of freezing and thawing. Centrifuge product if not completely clear after standing at room temperature. This product is stable for several weeks at 4° C as an undiluted liquid. Dilute only prior to immediate use.
Expiration:	Expiration date is one (1) year from date of receipt.

Images



ELISA

ELISA Results of Goat Anti-Mouse IgG + IgM Antibody Peroxidase Conjugated Minimum Cross Reactivity to Bovine, Horse and Human Serum Proteins tested against purified Mouse IgG + IgM. Each well was coated in duplicate with 10 µg of Mouse IgG (p/n 010-0102) [Red Line], Mouse IgM (IgG/IgA free) [Green Line], and Mouse IgG/IgM (p/n 010-0102/010-0107) [Blue Line]. The working dilution is 1:175,000. The starting dilution of antibody was 5µg/ml and the X-axis represents the Log10 of a 3-fold dilution. This titration is a 4-parameter curve fit where the IC50 is defined as the titer of the antibody. Assay performed using 3% Fish Gel/PBS Blocking buffer (p/n MB-066), and TMB substrate (p/n TMBE-1000).

References

- Powers JM et al. Non-replicating adenovirus based Mayaro virus vaccine elicits protective immune responses and cross protects against other alphaviruses. *PLoS Negl Trop Dis.* (2021)

Disclaimer

This product is for research use only and is not intended for therapeutic or diagnostic applications. Please contact a technical service representative for more information. All products of animal origin manufactured by Rockland Immunochemicals are derived from starting materials of North American origin. Collection was performed in United States Department of Agriculture (USDA) inspected facilities and all materials have been inspected and certified to be free of disease and suitable for exportation. All properties listed are typical characteristics and are not specifications. All suggestions and data are offered in good faith but without guarantee as conditions and methods of use of our products are beyond our control. All claims must be made within 30 days following the date of delivery. The prospective user must determine the suitability of our materials before adopting them on a commercial scale. Suggested uses of our products are not recommendations to use our products in violation of any patent or as a license under any patent of Rockland Immunochemicals, Inc. If you require a commercial license to use this material and do not have one, then return this material, unopened to: Rockland Inc., P.O. BOX 5199, Limerick, Pennsylvania, USA.