

Datasheet for 609-4106

Human IgA (alpha chain) Antibody

Overview

Description:	Rabbit Anti-Human IgA (alpha chain) Antibody - 609-4106
Item No.:	609-4106
Size:	2 mg
Applications:	WB
Reactivity:	Human
Host Species:	Rabbit

Product Details

Background:	Anti-Human IgA Antibody generated in rabbit detects immunoglobulin A (alpha chain) from human. Immunoglobulin A (IgA) is an antibody that plays a critical role in mucosal immunity. IgA has two subclasses (IgA1 and IgA2) and can exist in a dimeric form called secretory IgA (sIgA). Secondary Antibodies are available in a variety of formats and conjugate types. When choosing a secondary antibody product, consideration must be given to species and immunoglobulin specificity, conjugate type, fragment and chain specificity, level of cross-reactivity, and host-species source and fragment composition.
Synonyms:	Rabbit Anti Human IgA (alpha chain) Antibody, Rabbit Anti-Human IgA (alpha chain) Antibody, Rabbit Anti Human IgA Antibody
Host Species:	Rabbit
Specificity:	IgA
Clonality:	Polyclonal
Format:	IgG

Target Details

Reactivity:	Human
Immunogen:	Human IgA alpha heavy chain

Purity/Specificity: This product was prepared from monospecific antiserum by immunoaffinity chromatography using Human IgA coupled to agarose followed by solid phase adsorption(s). Assay by immunoelectrophoresis resulted in a single precipitin arc against anti-Rabbit Serum, Human IgA and Human Serum. No reaction was observed against other human heavy or light chain proteins.

Relevant Links:

- [609-4106 SDS](#)

Application Details

Tested Applications:	WB
Application Note:	Anti-Human IgA Antibody is tested for ELISA and western blotting. This product is also suitable for multiplex analysis, including multicolor imaging, utilizing various commercial platforms.
Assay Dilutions:	All assays should be optimized by the user. Recommended dilutions (if any) may be listed below.
ELISA:	1:5,000 - 1:20,000
IHC:	1:250 - 1:1,000
WB:	1:500 - 1:2,000

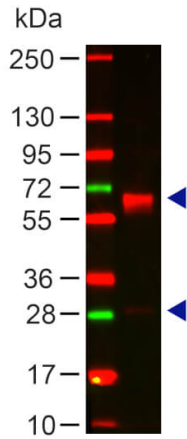
Formulation

Physical State:	Liquid (sterile filtered)
Concentration:	2.12 by UV absorbance at 280 nm
Buffer:	0.02 M Potassium Phosphate, 0.15 M Sodium Chloride, pH 7.2
Preservative:	0.01% (w/v) Sodium Azide
Stabilizer:	None

Shipping & Handling

Shipping Condition:	Wet Ice
Storage Condition:	Store vial at 4° C prior to opening. This product is stable for several weeks at 4° C as an undiluted liquid. Dilute only prior to immediate use. For extended storage aliquot contents and freeze at -20° C or below. Avoid cycles of freezing and thawing.
Expiration:	Expiration date is one (1) year from date of receipt.

Images



Western Blot

Western Blot of Rabbit Anti-HUMAN IgA (alpha chain) Antibody. Lane 1: Human IgA (p/n 009-0106). Load: 100 ng per lane. Primary antibody: HUMAN IgA (alpha chain) Antibody at 1:1000 for 60 min at RT. Secondary antibody: DyLight 649 goat anti-rabbit at 1:20,000 for 30 min at RT. Block: 5% BLOTTO (p/n B501-0500) 30 min at RT. Predicted/Observed size: 60 and 28 kDa, 60 and 28 kDa.

Disclaimer

This product is for research use only and is not intended for therapeutic or diagnostic applications. Please contact a technical service representative for more information. All products of animal origin manufactured by Rockland Immunochemicals are derived from starting materials of North American origin. Collection was performed in United States Department of Agriculture (USDA) inspected facilities and all materials have been inspected and certified to be free of disease and suitable for exportation. All properties listed are typical characteristics and are not specifications. All suggestions and data are offered in good faith but without guarantee as conditions and methods of use of our products are beyond our control. All claims must be made within 30 days following the date of delivery. The prospective user must determine the suitability of our materials before adopting them on a commercial scale. Suggested uses of our products are not recommendations to use our products in violation of any patent or as a license under any patent of Rockland Immunochemicals, Inc. If you require a commercial license to use this material and do not have one, then return this material, unopened to: Rockland Inc., P.O. BOX 5199, Limerick, Pennsylvania, USA.