

Datasheet for 609-143-007

Human IgM (mu chain) Antibody DyLight™ 649 Conjugated

Overview

Description:	Goat Anti-Human IgM (mu chain) Antibody DyLight™ 649 Conjugated - 609-143-007
Item No.:	609-143-007
Size:	100 µg
Reactivity:	Human
Host Species:	Goat

Product Details

Background:	Anti-Human IgM (mu heavy chain) DyLight 649 generated in goat detects specifically Human IgM mu heavy chain. Immunoglobulin M is the largest antibody isotype and the first to be secreted against an initial exposure to antigen. IgM is predominantly produced in the spleen. Formed from covalently linking 5 immunoglobulins together. Anti-Human IgM mu chain antibody is ideal for investigators in Immunology, Microbiology, and Cell Biology.
Synonyms:	Goat Anti-Human IgM (mu chain) Antibody DyLight™ 649 Conjugated, Goat Anti Human IgM (mu chain) Antibody DyLight™ 649 Conjugated
Host Species:	Goat
Specificity:	IgM µ chain
Conjugate:	DyLight™ 649
Clonality:	Polyclonal
Format:	IgG
F/P Ratio:	1.8

Target Details

Reactivity:	Human
Immunogen:	Human IgM whole molecule

Purity/Specificity: This product was prepared from monospecific antiserum by immunoaffinity chromatography using Human IgM coupled to agarose beads followed by solid phase adsorption(s) to remove any unwanted reactivities. Assay by immunoelectrophoresis resulted in a single precipitin arc against anti-Goat Serum, Human IgM and Human Serum. No reaction was observed against other human heavy or light chain proteins.

Application Details

Application Note: The emission spectra for this DyLight™ conjugate match the principle output wavelengths of most common fluorescence instrumentation. Anti-Human IgM (mu heavy chain) DyLight 649 is designed for immunofluorescence microscopy, fluorescence based plate assays (FLISA) and fluorescent western blotting. This product is also suitable for multiplex analysis, including multicolor imaging, utilizing various commercial platforms.

Assay Dilutions: All assays should be optimized by the user. Recommended dilutions (if any) may be listed below.

FLISA: >1:20,000

IF: >1:5,000

WB: >1:10,000

Formulation

Physical State: Lyophilized

Concentration: 1.0 mg/mL by UV absorbance at 280 nm

Buffer: 0.02 M Potassium Phosphate, 0.15 M Sodium Chloride, pH 7.2

Preservative: 0.01% (w/v) Sodium Azide

Stabilizer: 10 mg/mL Bovine Serum Albumin (BSA) - Immunoglobulin and Protease free

Reconstitution Volume: 100 µL

Reconstitution Buffer: Restore with deionized water (or equivalent)

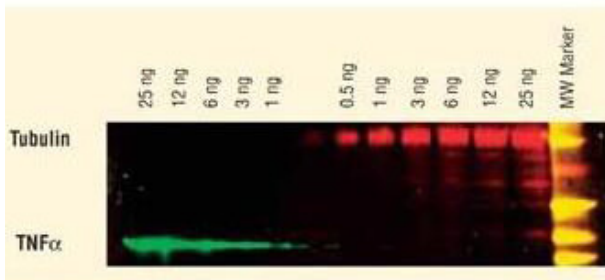
Shipping & Handling

Shipping Condition: Ambient

Storage Condition: Store vial at 4° C prior to restoration. For extended storage aliquot contents and freeze at -20° C or below. Avoid cycles of freezing and thawing. Centrifuge product if not completely clear after standing at room temperature. This product is stable for several weeks at 4° C as an undiluted liquid. Dilute only prior to immediate use.

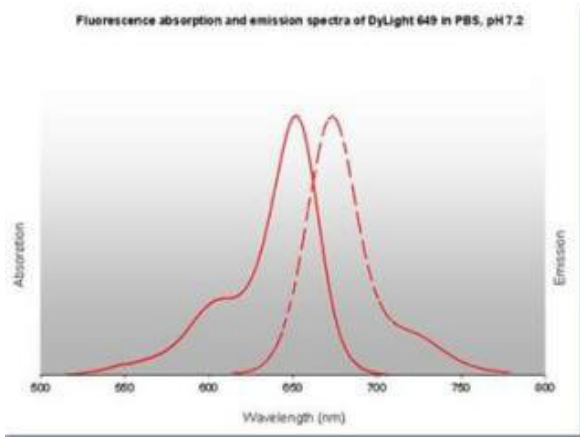
Expiration: Expiration date is one (1) year from date of receipt.

Images



Western Blot

DyLight™ dyes can be used for two-color Western Blot detection with low background and high signal. Anti-tubulin was detected using a DyLight™ 549 conjugate. Anti-TNFα was detected using a DyLight™ 649 conjugate. The image was captured using the Typhoon™ 9410 Imaging System.



Diagram

References

- Ishida E et al. Mucosal and systemic antigen-specific antibody responses correlate with protection against active tuberculosis in nonhuman primates. *EBioMedicine*. (2024)

Disclaimer

This product is for research use only and is not intended for therapeutic or diagnostic applications. Please contact a technical service representative for more information. All products of animal origin manufactured by Rockland Immunochemicals are derived from starting materials of North American origin. Collection was performed in United States Department of Agriculture (USDA) inspected facilities and all materials have been inspected and certified to be free of disease and suitable for exportation. All properties listed are typical characteristics and are not specifications. All suggestions and data are offered in good faith but without guarantee as conditions and methods of use of our products are beyond our control. All claims must be made within 30 days following the date of delivery. The prospective user must determine the suitability of our materials before adopting them on a commercial scale. Suggested uses of our products are not recommendations to use our products in violation of any patent or as a license under any patent of Rockland Immunochemicals, Inc. If you require a commercial license to use this material and do not have one, then return this material, unopened to: Rockland Inc., P.O. BOX 5199, Limerick, Pennsylvania, USA.