

## Datasheet for 609-1202

**Human IgG (H&L) Antibody Fluorescein Conjugated****Overview**

|                      |  |
|----------------------|--|
| <b>Description:</b>  | Goat Anti-Human IgG (H&L) Antibody Fluorescein Conjugated - 609-1202 |
| <b>Item No.:</b>     | 609-1202   |
| <b>Size:</b>         | 2 mg   |
| <b>Applications:</b> | Dot Blot, WB   |
| <b>Reactivity:</b>   | Human  |
| <b>Host Species:</b> | Goat   |

**Product Details**

|                           |   |
|---------------------------|---|
| <b>Background:</b>        | Anti-Human IgG (H&L) Fluorescein generated in goat detects human Immunoglobulin G (IgG), both heavy and light chains of the antibody molecule are present. It is a protein complex composed of four peptide chains — two identical heavy chains and two identical light chains arranged in a Y-shape typical of antibody monomers. Each IgG has two antigen binding sites. Representing approximately 75% of serum immunoglobulins in humans, IgG is the most abundant antibody isotype found in the circulation. IgG molecules are synthesized and secreted by plasma B cells. Secondary Antibodies are available in a variety of formats and conjugate types. When choosing a secondary antibody product, consideration must be given to species and immunoglobulin specificity, conjugate type, fragment and chain specificity, level of cross-reactivity, and host-species source and fragment composition. |
| <b>Synonyms:</b>          | goat anti-Human IgG fluorescein conjugated Antibody, goat anti-Human IgG Antibody FITC conjugation  |
| <b>Host Species:</b>      | Goat  |
| <b>Specificity:</b>       | IgG (H&L)   |
| <b>Conjugate:</b>         | Fluorescein (FITC)  |
| <b>Clonality:</b>         | Polyclonal  |
| <b>Format:</b>            | IgG   |
| <b>F/P Ratio:</b>         | 4.17  |
| <b>Specific Activity:</b> | 4.17  |

## Target Details

|                            |   |
|----------------------------|---|
| <b>Reactivity:</b>         | Human   |
| <b>Immunogen:</b>          | Human IgG whole molecule  |
| <b>Purity/Specificity:</b> | This product was prepared from monospecific antiserum by immunoaffinity chromatography using Human IgG coupled to agarose beads followed by solid phase adsorption(s) to remove any unwanted reactivities. Assay by immunoelectrophoresis resulted in a single precipitin arc against anti-Fluorescein, anti-Goat Serum, Human IgG and Human Serum. |

## Application Details

|                             |  |
|-----------------------------|--|
| <b>Tested Applications:</b> | Dot Blot, WB   |
| <b>Application Note:</b>    | Anti-Human IgG (H&L) Fluorescein has been tested by dot blot and western blot and is designed for immunofluorescence microscopy, fluorescence based plate assays (FLISA) and fluorescent western blotting. This product is also suitable for multiplex analysis, including multicolor imaging, utilizing various commercial platforms. |
| <b>Assay Dilutions:</b>     | All assays should be optimized by the user. Recommended dilutions (if any) may be listed below.  |
| <b>FC:</b>                  | 1:500 - 1:2,500  |
| <b>FLISA:</b>               | 1:10,000 - 1:50,000  |
| <b>IF:</b>                  | 1:1,000 - 1:5,000  |

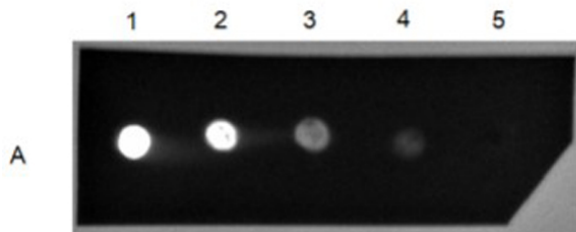
## Formulation

|                               |  |
|-------------------------------|--|
| <b>Physical State:</b>        | Lyophilized  |
| <b>Concentration:</b>         | 2.0 mg/mL by UV absorbance at 280 nm                                   |
| <b>Buffer:</b>                | 0.01 M Sodium Phosphate, 0.15 M Sodium Chloride, pH 7.2                |
| <b>Preservative:</b>          | 0.01% (w/v) Sodium Azide   |
| <b>Stabilizer:</b>            | 10 mg/mL Bovine Serum Albumin (BSA) - Immunoglobulin and Protease free |
| <b>Reconstitution Volume:</b> | 1.0 mL   |
| <b>Reconstitution Buffer:</b> | Restore with deionized water (or equivalent)                           |

## Shipping & Handling

|                            |   |
|----------------------------|---|
| <b>Shipping Condition:</b> | Ambient   |
| <b>Storage Condition:</b>  | Store vial at 4° C prior to restoration. For extended storage aliquot contents and freeze at -20° C or below. Avoid cycles of freezing and thawing. Centrifuge product if not completely clear after standing at room temperature. This product is stable for several weeks at 4° C as an undiluted liquid. Dilute only prior to immediate use. |
| <b>Expiration:</b>         | Expiration date is one (1) year from date of receipt.   |

## Images



### Dot Blot

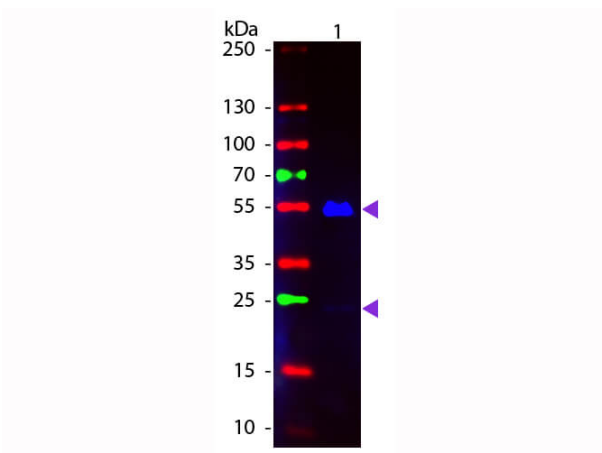
Dot Blot Results of Goat Anti-Human IgG Fluorescein Conjugated Antibody.

Human IgG (p/n 009-0102) loaded: 1- 100ng, 2- 33.33ng, 3- 11.11ng, 4- 3.70ng, 5- 1.23ng.

Goat Anti-Human IgG Fluorescein Conjugated Antibody 1.0µg/mL at RT for 60mins.

Blocking Buffer for Fluorescent Western Blotting (p/n MB-070) for 30 mins at RT.

Exposure: 0.2 secs. Fluorescein Filter.



### Western Blot

Western Blot of Fluorescein conjugated Goat anti-Human IgG secondary antibody. Lane 1: Human IgG. Load: 50 ng per lane. Primary antibody: none. Secondary antibody: Fluorescein goat secondary antibody at 1:1,000 for 60 min at RT. Block: MB-070 for 30 min at RT. Predicted/Observed size: 25 & 55 kDa, 25 & 55 kDa for Human IgG. Other band (s): none.

## Disclaimer

This product is for research use only and is not intended for therapeutic or diagnostic applications. Please contact a technical service representative for more information. All products of animal origin manufactured by Rockland Immunochemicals are derived from starting materials of North American origin. Collection was performed in United States Department of Agriculture (USDA) inspected facilities and all materials have been inspected and certified to be free of disease and suitable for exportation. All properties listed are typical characteristics and are not specifications. All suggestions and data are offered in good faith but without guarantee as conditions and methods of use of our products are beyond our control. All claims must be made within 30 days following the date of delivery. The prospective user must determine the suitability of our materials before adopting them on a commercial scale. Suggested uses of our products are not recommendations to use our products in violation of any patent or as a license under any patent of Rockland Immunochemicals, Inc. If you require a commercial license to use this material and do not have one, then return this material, unopened to: Rockland Inc., P.O. BOX 5199, Limerick, Pennsylvania, USA.