

Datasheet for 606-1503

Guinea Pig IgG Fc Antibody Alkaline Phosphatase Conjugated

Overview

Description:	Goat Anti-Guinea Pig IgG Fc Antibody Alkaline Phosphatase Conjugated - 606-1503
Item No.:	606-1503
Size:	1 mg
Applications:	Dot Blot, ELISA
Reactivity:	Guinea Pig
Host Species:	Goat

Product Details

Background:	Anti-Guinea Pig IgG F(c) Alkaline Phosphatase generated in goat is a proteolytic fragment of immunoglobulin G (IgG) obtained by limited digestion with the enzyme papain under controlled conditions of temperature, time and pH. Receptors bind the Fc portion of Guinea Pig IgG and often this fragment is removed from immunoglobulins to minimize receptor binding and lower background reactivity.
Synonyms:	goat Anti-Guinea Pig IgG F(c) Antibody Alkaline Phosphatase Conjugated, goat Anti-Guinea Pig IgG Fc Fragment Antibody alk phos Conjugated
Host Species:	Goat
Specificity:	IgG Fc
Conjugate:	Alkaline Phosphatase (AP)
Clonality:	Polyclonal
Format:	IgG

Target Details

Reactivity:	Guinea Pig
Immunogen:	Guinea Pig IgG F(c) fragment

Purity/Specificity: This product was prepared from monospecific antiserum by immunoaffinity chromatography using Guinea Pig IgG coupled to agarose beads followed by solid phase adsorption(s) to remove any unwanted reactivities. Assay by immunoelectrophoresis resulted in a single precipitin arc against anti-Alkaline Phosphatase (calf intestine), anti-Goat Serum, Guinea Pig IgG, Guinea Pig IgG F(c) and Guinea Pig Serum. No reaction was observed against Guinea Pig IgG F(ab).

Application Details

Tested Applications: Dot Blot, ELISA

Application Note: Anti-Guinea Pig IgG F(c) Alkaline Phosphatase has been tested by ELISA and dot blot. This product has been assayed against 1.0 ug of Guinea Pig IgG in a standard capture ELISA using pNPP p-nitrophenyl phosphate code # NPP-10 as a substrate for 30 minutes at room temperature. A working dilution of 1:1,000 to 1:5,000 is suggested for this product.

Assay Dilutions: All assays should be optimized by the user. Recommended dilutions (if any) may be listed below.

ELISA: 1:2,000 - 1:10,000

IHC: 1:200 - 1:1,000

WB: 1:500 - 1:2,500

Formulation

Physical State: Liquid (sterile filtered)

Concentration: 1.0 mg/mL by UV absorbance at 280 nm

Buffer: 0.05 M Tris Chloride, 0.15M Sodium Chloride, 0.001M Magnesium Chloride, 0.0001M Zinc Chloride, 50% (v/v) Glycerol; pH 8.0

Preservative: 0.01% (w/v) Sodium Azide

Stabilizer: 10 mg/mL Bovine Serum Albumin (BSA) - Immunoglobulin and Protease free

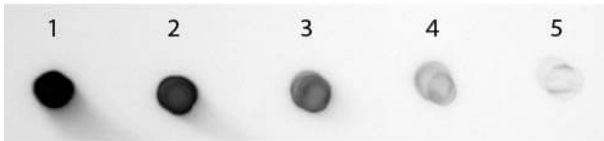
Shipping & Handling

Shipping Condition: Wet Ice

Storage Condition: Store vial at 4° C before opening. DO NOT FREEZE. This product is stable at 4° C as an undiluted liquid. Dilute only prior to immediate use. Freezing alkaline phosphatase conjugates will result in a substantial loss of enzymatic activity.

Expiration: Expiration date is one (1) year from date of receipt.

Images



Dot Blot

Dot Blot of Goat anti-Guinea Pig IgG Fc Antibody Alkaline Phosphatase Conjugated. Antigen: Guinea Pig IgG Fc. Load: Lane 1 - 200 ng Lane 2 - 66.67 ng Lane 3 - 22.22 ng Lane 4 - 7.41 ng Lane 5 - 2.47 ng. Primary antibody: none. Secondary antibody: Goat anti-Guinea Pig IgG Fc Antibody Alkaline Phosphatase Conjugated at 1:1,000 for 60 min at RT. Block: MB-070 for 60 min at RT. Visualized using NBT-100 Alkaline Phosphatase Substrate for 30 seconds at RT.

Disclaimer

This product is for research use only and is not intended for therapeutic or diagnostic applications. Please contact a technical service representative for more information. All products of animal origin manufactured by Rockland Immunochemicals are derived from starting materials of North American origin. Collection was performed in United States Department of Agriculture (USDA) inspected facilities and all materials have been inspected and certified to be free of disease and suitable for exportation. All properties listed are typical characteristics and are not specifications. All suggestions and data are offered in good faith but without guarantee as conditions and methods of use of our products are beyond our control. All claims must be made within 30 days following the date of delivery. The prospective user must determine the suitability of our materials before adopting them on a commercial scale. Suggested uses of our products are not recommendations to use our products in violation of any patent or as a license under any patent of Rockland Immunochemicals, Inc. If you require a commercial license to use this material and do not have one, then return this material, unopened to: Rockland Inc., P.O. BOX 5199, Limerick, Pennsylvania, USA.