

## Datasheet for 603-4904

**Chicken IgG F(ab')<sub>2</sub> Antibody Texas Red™ Conjugated****Overview**

<b>Description:</b>	Rabbit Anti-Chicken IgG F(ab') <sub>2</sub> Antibody Texas Red™ Conjugated - 603-4904
<b>Item No.:</b>	603-4904
<b>Size:</b>	1.5 mg
<b>Reactivity:</b>	Chicken
<b>Host Species:</b>	Rabbit

**Product Details**

<b>Background:</b>	Anti-Chicken IgG F(ab') <sub>2</sub> Antibody generated in rabbit is a proteolytic fragment of immunoglobulin G (IgG) obtained by limited digestion with the enzyme pepsin under controlled conditions of temperature, time and pH. F(ab') <sub>2</sub> molecules lack the Fc portion of IgG and therefore receptors that bind Chicken IgG F(c) will not bind Chicken IgG F(ab') <sub>2</sub> molecules.
<b>Synonyms:</b>	rabbit anti Chicken IgG F(ab') <sub>2</sub> Antibody Texas Red™ conjugate, rabbit anti Chicken IgG Fab2 Antibody Texas Red™ Conjugate, rabbit anti-Chicken IgY F(ab') <sub>2</sub> Antibody Texas Red™
<b>Host Species:</b>	Rabbit
<b>Specificity:</b>	IgG F(ab') <sub>2</sub>
<b>Conjugate:</b>	Texas Red®
<b>Clonality:</b>	Polyclonal
<b>Format:</b>	IgG
<b>F/P Ratio:</b>	3.1

**Target Details**

<b>Reactivity:</b>	Chicken
<b>Immunogen:</b>	Chicken IgG F(ab') <sub>2</sub> fragment
<b>Purity/Specificity:</b>	This product was prepared from monospecific antiserum by immunoaffinity chromatography using Chicken IgG coupled to agarose beads. Assay by immunoelectrophoresis resulted in a single precipitin arc against anti-Rabbit Serum, Chicken IgG, Chicken IgG F(ab') <sub>2</sub> , and Chicken Serum. No reaction was observed against Chicken IgG F(c).

## Application Details

**Application Note:** This product is designed for immunofluorescence microscopy, fluorescence based plate assays (FLISA) and fluorescent western blotting. This product is also suitable for multiplex analysis, including multicolor imaging, utilizing various commercial platforms.

**Assay Dilutions:** All assays should be optimized by the user. Recommended dilutions (if any) may be listed below.

**FC:** 1:500 - 1:2,500

**FLISA:** 1:10,000 - 1:50,000

**IF:** 1:1,000 - 1:5,000

## Formulation

**Physical State:** Lyophilized

**Concentration:** 1.5 mg/mL by UV absorbance at 280 nm

**Buffer:** 0.02 M Potassium Phosphate, 0.15 M Sodium Chloride, pH 7.2

**Preservative:** 0.01% (w/v) Sodium Azide

**Stabilizer:** 10 mg/mL Bovine Serum Albumin (BSA) - Immunoglobulin and Protease free

**Reconstitution Volume:** 1.0 mL

**Reconstitution Buffer:** Restore with deionized water (or equivalent)

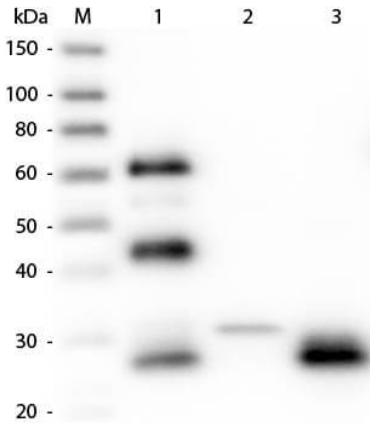
## Shipping & Handling

**Shipping Condition:** Ambient

**Storage Condition:** Store vial at 4° C prior to restoration. For extended storage aliquot contents and freeze at -20° C or below. Avoid cycles of freezing and thawing. Centrifuge product if not completely clear after standing at room temperature. This product is stable for several weeks at 4° C as an undiluted liquid. Dilute only prior to immediate use.

**Expiration:** Expiration date is one (1) year from date of receipt.

## Images

**Western Blot**

Western Blot of Unconjugated Anti-Chicken IgG F(ab')<sub>2</sub> (RABBIT) Antibody (p/n 603-4104). Lane M: 3 µl Molecular Ladder. Lane 1: Chicken IgG whole molecule (p/n 003-0102). Lane 2: Chicken IgG F(c) Fragment (p/n 003-0103). Lane 3: Chicken IgG F(ab) Fragment (p/n 003-0105). All samples were reduced. Load: 50 ng per lane. Block: MB-070 for 30 min at RT. Primary Antibody: Anti-Chicken IgG F(ab')<sub>2</sub> (RABBIT) Antibody (p/n 603-4104) 1:5,000 for 60 min at RT. Secondary antibody: Anti-Rabbit IgG (GOAT) Peroxidase Conjugated Antibody (p/n 611-103-122) 1:40,000 in MB-070 for 30 min at RT. Predicted/Observed Size: 25 and 72 kDa for Chicken IgY, 25 kDa for F(c) and F(ab). Chicken F(c) migrates slightly higher.

**Disclaimer**

This product is for research use only and is not intended for therapeutic or diagnostic applications. Please contact a technical service representative for more information. All products of animal origin manufactured by Rockland Immunochemicals are derived from starting materials of North American origin. Collection was performed in United States Department of Agriculture (USDA) inspected facilities and all materials have been inspected and certified to be free of disease and suitable for exportation. All properties listed are typical characteristics and are not specifications. All suggestions and data are offered in good faith but without guarantee as conditions and methods of use of our products are beyond our control. All claims must be made within 30 days following the date of delivery. The prospective user must determine the suitability of our materials before adopting them on a commercial scale. Suggested uses of our products are not recommendations to use our products in violation of any patent or as a license under any patent of Rockland Immunochemicals, Inc. If you require a commercial license to use this material and do not have one, then return this material, unopened to: Rockland Inc., P.O. BOX 5199, Limerick, Pennsylvania, USA.