

**Datasheet for 603-4903****Chicken IgG Fc Antibody Texas Red™ Conjugated****Overview**

<b>Description:</b>	Rabbit Anti-Chicken IgG Fc Antibody Texas Red™ Conjugated - 603-4903
<b>Item No.:</b>	603-4903
<b>Size:</b>	1.5 mg
<b>Reactivity:</b>	Chicken
<b>Host Species:</b>	Rabbit

**Product Details**

<b>Background:</b>	Anti-Chicken IgG F(c) Antibody detects specifically Chicken IgG F(c). It is a proteolytic fragment of immunoglobulin G (IgG) obtained by limited digestion with the enzyme papain under controlled conditions of temperature, time and pH. Receptors bind the Fc portion of chicken IgG and often this fragment is removed from immunoglobulins to minimize receptor binding and lower background reactivity. Anti-Chicken IgG F(c) Antibody is ideal for investigators in Cancer, Immunology, and Microbiology research.
<b>Synonyms:</b>	rabbit anti Chicken IgG F(c) Antibody Texas Red™ Conjugated, rabbit anti Chicken IgG Fc Antibody Texas Red™ Conjugated, rabbit anti-Chicken IgY F(c) Antibody Texas Red™
<b>Host Species:</b>	Rabbit
<b>Specificity:</b>	IgG Fc
<b>Conjugate:</b>	Texas Red®
<b>Clonality:</b>	Polyclonal
<b>Format:</b>	IgG
<b>F/P Ratio:</b>	2.6

**Target Details**

<b>Reactivity:</b>	Chicken
<b>Immunogen:</b>	Chicken IgG F(c) fragment

**Purity/Specificity:** This product was prepared from monospecific antiserum by immunoaffinity chromatography using Chicken IgG coupled to agarose beads followed by solid phase adsorption(s) to remove any unwanted reactivities. Assay by immunoelectrophoresis resulted in a single precipitin arc against anti-Rabbit Serum, Chicken IgG, Chicken IgG F(c) and Chicken Serum. No reaction was observed against Chicken IgG F(ab).

## Application Details

**Application Note:** This product is designed for immunofluorescence microscopy, fluorescence based plate assays (FLISA) and fluorescent western blotting. This product is also suitable for multiplex analysis, including multicolor imaging, utilizing various commercial platforms.

**Assay Dilutions:** All assays should be optimized by the user. Recommended dilutions (if any) may be listed below.

**FC:** 1:500 - 1:2,500

**FLISA:** 1:10,000 - 1:50,000

**IF:** 1:1,000 - 1:5,000

## Formulation

**Physical State:** Lyophilized

**Concentration:** 1.5 mg/mL by UV absorbance at 280 nm

**Buffer:** 0.02 M Potassium Phosphate, 0.15 M Sodium Chloride, pH 7.2

**Preservative:** 0.01% (w/v) Sodium Azide

**Stabilizer:** 10 mg/mL Bovine Serum Albumin (BSA) - Immunoglobulin and Protease free

**Reconstitution Volume:** 1.0 mL

**Reconstitution Buffer:** Restore with deionized water (or equivalent)

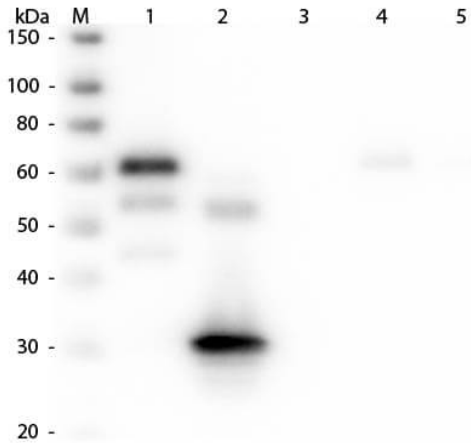
## Shipping & Handling

**Shipping Condition:** Ambient

**Storage Condition:** Store vial at 4° C prior to restoration. For extended storage aliquot contents and freeze at -20° C or below. Avoid cycles of freezing and thawing. Centrifuge product if not completely clear after standing at room temperature. This product is stable for several weeks at 4° C as an undiluted liquid. Dilute only prior to immediate use.

**Expiration:** Expiration date is one (1) year from date of receipt.

## Images



### Western Blot

Western Blot of Unconjugated Anti-Chicken IgG F(c) (RABBIT) Antibody (p/n 603-4103). Lane M: 3  $\mu$ l Molecular Ladder. Lane 1: Chicken IgG whole molecule (p/n 003-0102). Lane 2: Chicken IgG F(c) Fragment (p/n 003-0103). Lane 3: Chicken IgG Fab Fragment (p/n 003-0105). Lane 4: Chicken IgM Whole Molecule (p/n 003-0107). Lane 5: Chicken Serum (p/n D302-05). All samples were reduced. Load: 50 ng per lane. Block: MB-070 for 30 min at RT. Primary Antibody: Anti-Chicken IgG F(c) (RABBIT) Antibody (p/n 603-4103) 1:2,000 for 60 min at RT. Secondary antibody: Anti-Rabbit IgG (GOAT) Peroxidase Conjugated Antibody (p/n 611-103-122) 1:40,000 in MB-070 for 30 min at RT. Predicted/Observed Size: 25 and 72 kDa for Chicken IgY and Serum, 25 kDa for F(c) and Fab, 75 kDa for IgM. Chicken F(c) migrates slightly higher.

## Disclaimer

This product is for research use only and is not intended for therapeutic or diagnostic applications. Please contact a technical service representative for more information. All products of animal origin manufactured by Rockland Immunochemicals are derived from starting materials of North American origin. Collection was performed in United States Department of Agriculture (USDA) inspected facilities and all materials have been inspected and certified to be free of disease and suitable for exportation. All properties listed are typical characteristics and are not specifications. All suggestions and data are offered in good faith but without guarantee as conditions and methods of use of our products are beyond our control. All claims must be made within 30 days following the date of delivery. The prospective user must determine the suitability of our materials before adopting them on a commercial scale. Suggested uses of our products are not recommendations to use our products in violation of any patent or as a license under any patent of Rockland Immunochemicals, Inc. If you require a commercial license to use this material and do not have one, then return this material, unopened to: Rockland Inc., P.O. BOX 5199, Limerick, Pennsylvania, USA.