

Datasheet for 603-4503

Chicken IgG Fc Antibody Alkaline Phosphatase Conjugated

Overview

Description:	Rabbit Anti-Chicken IgG Fc Antibody Alkaline Phosphatase Conjugated - 603-4503
Item No.:	603-4503
Size:	1 mg
Applications:	ELISA
Reactivity:	Chicken
Host Species:	Rabbit

Product Details

Background:	Anti-Chicken IgG F(c) Antibody detects specifically Chicken IgG F(c). It is a proteolytic fragment of immunoglobulin G (IgG) obtained by limited digestion with the enzyme papain under controlled conditions of temperature, time and pH. Receptors bind the Fc portion of chicken IgG and often this fragment is removed from immunoglobulins to minimize receptor binding and lower background reactivity. Anti-Chicken IgG F(c) Antibody is ideal for investigators in Cancer, Immunology, and Microbiology research.
Synonyms:	rabbit anti-Chicken IgG F(c) Antibody Alkaline Phosphatase Conjugation, rabbit anti-Chicken IgG Fc Fragment Alk Phos Conjugated Antibody, rabbit anti-Chicken IgY F(c) Antibody Alkaline Phosphatase
Host Species:	Rabbit
Specificity:	IgG Fc
Conjugate:	Alkaline Phosphatase (AP)
Clonality:	Polyclonal
Format:	IgG

Target Details

Reactivity:	Chicken
Immunogen:	Chicken IgG F(c) fragment

Purity/Specificity: This product was prepared from monospecific antiserum by immunoaffinity chromatography using Chicken IgG coupled to agarose beads followed by solid phase adsorption(s) to remove any unwanted reactivities. Assay by immunoelectrophoresis resulted in a single precipitin arc against anti-Alkaline Phosphatase (calf intestine), anti-Rabbit Serum, Chicken IgG, Chicken IgG F (c) and Chicken Serum. No reaction was observed against Chicken IgG F(ab).

Application Details

Tested Applications: ELISA

Application Note: Anti-Chicken IgG F(c) Antibody Alkaline Phosphatase Conjugated has been tested by ELISA. This product has been assayed against 1.0 ug of Chicken IgG in a standard capture ELISA using pNPP p-nitrophenyl phosphate code # NPP-10 as a substrate for 30 minutes at room temperature. A working dilution of 1:2,000 to 1:9,000 of the reconstitution concentration is suggested for this product.

Assay Dilutions: All assays should be optimized by the user. Recommended dilutions (if any) may be listed below.

ELISA: 1:5,000

IHC: 1:200 - 1:1,000

WB: 1:500 - 1:2,500

Formulation

Physical State: Liquid (sterile filtered)

Concentration: 1.0 mg/mL by UV absorbance at 280 nm

Buffer: 0.05 M Tris Chloride, 0.15M Sodium Chloride, 0.001M Magnesium Chloride, 0.0001M Zinc Chloride, 50% (v/v) Glycerol; pH 8.0

Preservative: 0.1% (w/v) Sodium Azide

Stabilizer: 10 mg/mL Bovine Serum Albumin (BSA) - Immunoglobulin and Protease free

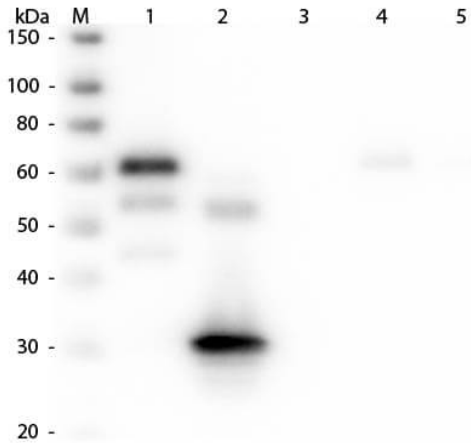
Shipping & Handling

Shipping Condition: Wet Ice

Storage Condition: Store vial at 4° C before opening. DO NOT FREEZE. This product is stable at 4° C as an undiluted liquid. Dilute only prior to immediate use. Freezing alkaline phosphatase conjugates will result in a substantial loss of enzymatic activity.

Expiration: Expiration date is one (1) year from date of receipt.

Images



Western Blot

Western Blot of Unconjugated Anti-Chicken IgG F(c) (RABBIT) Antibody (p/n 603-4103). Lane M: 3 μ l Molecular Ladder. Lane 1: Chicken IgG whole molecule (p/n 003-0102). Lane 2: Chicken IgG F(c) Fragment (p/n 003-0103). Lane 3: Chicken IgG Fab Fragment (p/n 003-0105). Lane 4: Chicken IgM Whole Molecule (p/n 003-0107). Lane 5: Chicken Serum (p/n D302-05). All samples were reduced. Load: 50 ng per lane. Block: MB-070 for 30 min at RT. Primary Antibody: Anti-Chicken IgG F(c) (RABBIT) Antibody (p/n 603-4103) 1:2,000 for 60 min at RT. Secondary antibody: Anti-Rabbit IgG (GOAT) Peroxidase Conjugated Antibody (p/n 611-103-122) 1:40,000 in MB-070 for 30 min at RT. Predicted/Observed Size: 25 and 72 kDa for Chicken IgY and Serum, 25 kDa for F(c) and Fab, 75 kDa for IgM. Chicken F(c) migrates slightly higher.

Disclaimer

This product is for research use only and is not intended for therapeutic or diagnostic applications. Please contact a technical service representative for more information. All products of animal origin manufactured by Rockland Immunochemicals are derived from starting materials of North American origin. Collection was performed in United States Department of Agriculture (USDA) inspected facilities and all materials have been inspected and certified to be free of disease and suitable for exportation. All properties listed are typical characteristics and are not specifications. All suggestions and data are offered in good faith but without guarantee as conditions and methods of use of our products are beyond our control. All claims must be made within 30 days following the date of delivery. The prospective user must determine the suitability of our materials before adopting them on a commercial scale. Suggested uses of our products are not recommendations to use our products in violation of any patent or as a license under any patent of Rockland Immunochemicals, Inc. If you require a commercial license to use this material and do not have one, then return this material, unopened to: Rockland Inc., P.O. BOX 5199, Limerick, Pennsylvania, USA.