

Datasheet for 603-4302

Chicken IgG (H&L) Antibody Peroxidase Conjugated

Overview

Description:	Rabbit Anti-Chicken IgG (H&L) Antibody Peroxidase Conjugated - 603-4302
Item No.:	603-4302
Size:	1.5 mg
Applications:	Dot Blot, ELISA, FISH
Reactivity:	Chicken
Host Species:	Rabbit

Product Details

Background:	Anti-Chicken IgG Peroxidase Antibody generated in rabbit detects chicken IgY. Secreted as part of the adaptive immune response by plasma B cells, immunoglobulin G constitutes 75% of serum immunoglobulins. Immunoglobulin G binds to viruses, bacteria, as well as fungi and facilitates their destruction or neutralization via agglutination (and thereby immobilizing them), activation of the compliment cascade, and opsonization for phagocytosis. The whole IgG molecule possesses both the F(c) region, recognized by high-affinity Fc receptor proteins, as well as the F(ab) region possessing the epitope-recognition site. Both heavy and light chains of the antibody molecule are present.
Synonyms:	rabbit anti-Chicken IgG Antibody Peroxidase Conjugation, rabbit anti-Chicken IgG HRP Conjugated Antibody, Anti-Chicken secondary antibody, rabbit anti-Chicken IgY HRP
Host Species:	Rabbit
Specificity:	IgG (H&L)
Conjugate:	Peroxidase (HRP)
Clonality:	Polyclonal
Format:	IgG

Target Details

Reactivity:	Chicken
Immunogen:	Chicken IgG whole molecule

Purity/Specificity: Anti-Chicken IgG/IgY Secondary Antibody was prepared from monospecific antiserum by immunoaffinity chromatography using Chicken IgG coupled to agarose beads followed by solid phase adsorption(s) to remove any unwanted reactivities. Assay by immunoelectrophoresis resulted in a single precipitin arc against anti-Peroxidase, anti-Rabbit Serum and Chicken IgG. Some light chain cross reactivity may be observed against chicken immunoglobulins.

Application Details

Tested Applications:	Dot Blot, ELISA
Suggested Applications:	FISH (Based on references)
Application Note:	Anti-Chicken IgG Peroxidase conjugate has been tested by dot blot and ELISA and is suitable for immunoblotting (western or dot blot), ELISA, immunoelectron microscopy and immunohistochemistry as well as other antibody-based enzymatic assays requiring lot-to-lot consistency.
Assay Dilutions:	All assays should be optimized by the user. Recommended dilutions (if any) may be listed below.
ELISA:	1:50,000 - 1:100,000
IHC:	1:1,000 - 1:5,000
WB:	1:2,500 - 1:15,000

Formulation

Physical State:	Lyophilized
Concentration:	1.0 mg/mL by UV absorbance at 280 nm
Buffer:	0.02 M Potassium Phosphate, 0.15 M Sodium Chloride, pH 7.2
Preservative:	0.01% (w/v) Gentamicin Sulfate. Do NOT add Sodium Azide!
Stabilizer:	10 mg/mL Bovine Serum Albumin (BSA) - Immunoglobulin and Protease free
Reconstitution Volume:	1.0 mL
Reconstitution Buffer:	Restore with deionized water (or equivalent)

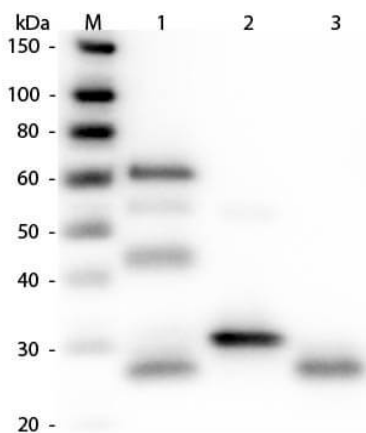
Shipping & Handling

Shipping Condition:	Ambient
----------------------------	---------

Storage Condition: Store Secondary Antibody at 4° C prior to restoration. For extended storage aliquot contents and freeze at -20° C or below. Avoid cycles of freezing and thawing. Centrifuge antibody if not completely clear after standing at room temperature. This product is stable for several weeks at 4° C as an undiluted liquid. Dilute only prior to immediate use.

Expiration: Expiration date is one (1) year from date of receipt.

Images



Western Blot

Western Blot of Unconjugated Anti-Chicken IgG (H&L) (RABBIT) Antibody (p/n 603-4102). Lane M: 3 μ l Molecular Ladder. Lane 1: Chicken IgG whole molecule (p/n 003-0102). Lane 2: Chicken IgG F(c) Fragment (p/n 003-0103). Lane 3: Chicken IgG Fab Fragment (p/n 003-0105). All samples were reduced. Load: 50 ng per lane. Block: MB-070 for 30 min at RT. Primary Antibody: Anti-Chicken IgG (H&L) (RABBIT) Antibody (p/n 603-4102) 1:3,000 for 60 min at RT. Secondary antibody: Anti-Rabbit IgG (GOAT) Peroxidase Conjugated Antibody (p/n 611-103-122) 1:40,000 in MB-070 for 30 min at RT. Predicted/Observed Size: 25 and 72 kDa for Chicken IgY, 25 kDa for F(c) and Fab. Chicken F(c) migrates slightly higher.

References

- Lutomska LM et al. Diet triggers specific responses of hypothalamic astrocytes in time and region dependent manner. *Glia*. (2022)

Disclaimer

This product is for research use only and is not intended for therapeutic or diagnostic applications. Please contact a technical service representative for more information. All products of animal origin manufactured by Rockland Immunochemicals are derived from starting materials of North American origin. Collection was performed in United States Department of Agriculture (USDA) inspected facilities and all materials have been inspected and certified to be free of disease and suitable for exportation. All properties listed are typical characteristics and are not specifications. All suggestions and data are offered in good faith but without guarantee as conditions and methods of use of our products are beyond our control. All claims must be made within 30 days following the date of delivery. The prospective user must determine the suitability of our materials before adopting them on a commercial scale. Suggested uses of our products are not recommendations to use our products in violation of any patent or as a license under any patent of Rockland Immunochemicals, Inc. If you require a commercial license to use this material and do not have one, then return this material, unopened to: Rockland Inc., P.O. BOX 5199, Limerick, Pennsylvania, USA.