

Datasheet for 603-105-007

Chicken IgM (mu chain) Antibody Alkaline Phosphatase Conjugated

Overview

Description:	Goat Anti-Chicken IgM (mu chain) Antibody Alkaline Phosphatase Conjugated - 603-105-007
Item No.:	603-105-007
Size:	1 mg
Applications:	ELISA
Reactivity:	Chicken
Host Species:	Goat

Product Details

Background:	Anti-Chicken IgM antibody specifically detects chicken IgM. Immunoglobulin M is the largest antibody isotype and the first to be secreted against an initial exposure to antigen. IgM is predominantly produced in the spleen. Formed from covalently linking 5 immunoglobulins together, the approximate molecular weight of IgM is 900kDa and possesses 10 binding sites (though due to the size of most antigens, not all sites are capable of binding at once). Due to this large size, IgM is typically isolated to the serum. Anti-Chicken IgM antibody is ideal for investigators in Immunology, Microbiology, and Cell Biology.
Synonyms:	goat anti-Chicken IgM (mu chain) Antibody Alkaline Phosphatase Conjugation, goat anti-Chicken IgM mu chain Alk Phos Conjugated Antibody
Host Species:	Goat
Specificity:	IgM μ chain
Conjugate:	Alkaline Phosphatase (AP)
Clonality:	Polyclonal
Format:	IgG

Target Details

Reactivity:	Chicken
Immunogen:	Chicken IgM whole molecule

Purity/Specificity: This product was prepared from monospecific antiserum by immunoaffinity chromatography using Chicken IgM coupled to agarose beads followed by solid phase adsorption(s) to remove any unwanted reactivities. Assay by immunoelectrophoresis resulted in a single precipitin arc against anti-Alkaline Phosphatase, anti-Goat Serum, Chicken IgM and Chicken Serum. No reaction was observed against other chicken heavy or light chain proteins.

Application Details

Tested Applications:	ELISA
Application Note:	Anti-Chicken IgM Alkaline Phosphatase conjugate has been tested by ELISA and is suitable for immunoblotting (western or dot blot), ELISA, immunoelectron microscopy and immunohistochemistry as well as other antibody-based enzymatic assays requiring lot-to-lot consistency.
Assay Dilutions:	All assays should be optimized by the user. Recommended dilutions (if any) may be listed below.
ELISA:	1:8,000
IHC:	1:200 - 1:1,000
WB:	1:200 - 1:2,000

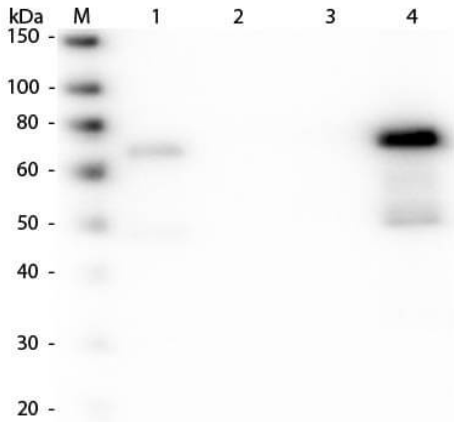
Formulation

Physical State:	Liquid (sterile filtered)
Concentration:	1.0 mg/mL by UV absorbance at 280 nm
Buffer:	0.05 M Tris Chloride, 0.15M Sodium Chloride, 0.001M Magnesium Chloride, 0.0001M Zinc Chloride, 50% (v/v) Glycerol; pH 8.0
Preservative:	0.01% (w/v) Sodium Azide
Stabilizer:	10 mg/mL Bovine Serum Albumin (BSA) - Immunoglobulin and Protease free

Shipping & Handling

Shipping Condition:	Wet Ice
Storage Condition:	Store vial at 4° C before opening. DO NOT FREEZE. This product is stable at 4° C as an undiluted liquid. Dilute only prior to immediate use. Freezing alkaline phosphatase conjugates will result in a substantial loss of enzymatic activity.
Expiration:	Expiration date is one (1) year from date of receipt.

Images



Western Blot

Western Blot of Anti-Chicken IgM (mu chain) (GOAT) Antibody Peroxidase Conjugated (p/n 603-103-007). Lane M: 3 µl Molecular Ladder. Lane 1: Chicken IgG whole molecule (p/n 003-0102). Lane 2: Chicken IgG F(c) Fragment (p/n 003-0103). Lane 3: Chicken IgG F(ab) Fragment (p/n 003-0105). Lane 4: Chicken IgM Whole Molecule (p/n 003-0107). All samples were reduced. Load: 50 ng per lane. Block: MB-070 for 30 min at RT. Primary Antibody: Anti-Chicken IgM (mu chain) (GOAT) Antibody Peroxidase Conjugated (p/n 603-103-007) 1:30,000 for 60 min at RT. Predicted/Observed Size: 25 and 72 kDa for Chicken IgY, 25 kDa for F(c) and Fab, 75 kDa for IgM. Chicken F(c) migrates slightly higher.

Disclaimer

This product is for research use only and is not intended for therapeutic or diagnostic applications. Please contact a technical service representative for more information. All products of animal origin manufactured by Rockland Immunochemicals are derived from starting materials of North American origin. Collection was performed in United States Department of Agriculture (USDA) inspected facilities and all materials have been inspected and certified to be free of disease and suitable for exportation. All properties listed are typical characteristics and are not specifications. All suggestions and data are offered in good faith but without guarantee as conditions and methods of use of our products are beyond our control. All claims must be made within 30 days following the date of delivery. The prospective user must determine the suitability of our materials before adopting them on a commercial scale. Suggested uses of our products are not recommendations to use our products in violation of any patent or as a license under any patent of Rockland Immunochemicals, Inc. If you require a commercial license to use this material and do not have one, then return this material, unopened to: Rockland Inc., P.O. BOX 5199, Limerick, Pennsylvania, USA.