

Datasheet for 600-901-G75**AP2M1 Antibody****Overview**

Description:	Anti-AP2M1 (Chicken) Antibody - 600-901-G75
Item No.:	600-901-G75
Size:	100 µg
Applications:	ELISA, IF, IHC, WB
Reactivity:	Human, Mouse, Rat
Host Species:	Chicken

Product Details

Background: AP2M1 antibody detects human AP2M1. The heterotetrameric coat assembly protein complex, also known as the adaptor-related protein complex 2 (AP-2), belongs to the adaptor complexes medium subunits family. The mu 1 subunit of the AP-2 complex (AP2M1) is required for the activity of a vacuolar ATPase, which is responsible for proton pumping occurring in the acidification of endosomes and lysosomes. AP2M1 has also been shown to associate with the HIV-1 protein Nef, suggesting that Nef may use AP-2 complex to enhance the rate of endocytosis of both CD4 and class I MHC. AP2M1 may also play an important role in regulating the intracellular trafficking and function of cytotoxic T-lymphocyte associated (CTLA)-4 protein. At least two isoforms of AP2M1 are known to exist. Anti-AP2M1 antibodies are ideal for investigators involved in infectious disease and enzyme research.

Synonyms:	CLAPM1, KIAA0109
Host Species:	Chicken
Clonality:	Polyclonal
Format:	IgY

Target Details

Gene Name:	AP2M1
Reactivity:	Human, Mouse, Rat
Immunogen Type:	Conjugated Peptide

Immunogen:	AP2M1 Antibody was produced in chicken by repeated immunizations with a peptide near the c-terminus of human AP2M1.
Purity/Specificity:	Anti-AP2M1 Antibody is an IgY fraction that has been affinity purified by immunoaffinity purification. A BLAST analysis was used to suggest cross-reactivity with AP2M1 with Human, Rat and Mouse based on 100% homology with the immunizing sequence. Cross-reactivity with AP2M1 from other sources has not been determined.
Relevant Links:	<ul style="list-style-type: none">• NCBI - NP_004059• UniProtKB - Q96CW1• GeneID - 1173

Application Details

Tested Applications:	ELISA, IF, IHC, WB
Application Note:	Anti-AP2M1 Antibody is tested for use in E, WB, IF, and IHC. Western Blot tested in human samples; Immunohistochemistry and Immunofluorescence tested in mouse samples. All other applications and species not yet tested. Expect a band approximately ~49.6kDa on specific lysates. Specific conditions for reactivity should be optimized by the end user.
Assay Dilutions:	All assays should be optimized by the user. Recommended dilutions (if any) may be listed below.
IF:	20µg/mL
IHC:	2.5µg/mL
WB:	1-2 ug/mL

Formulation

Physical State:	Liquid (sterile filtered)
Concentration:	1.0 mg/mL by UV absorbance at 280 nm
Buffer:	0.02 M Potassium Phosphate, 0.15 M Sodium Chloride, pH 7.2
Preservative:	0.01% (w/v) Sodium Azide

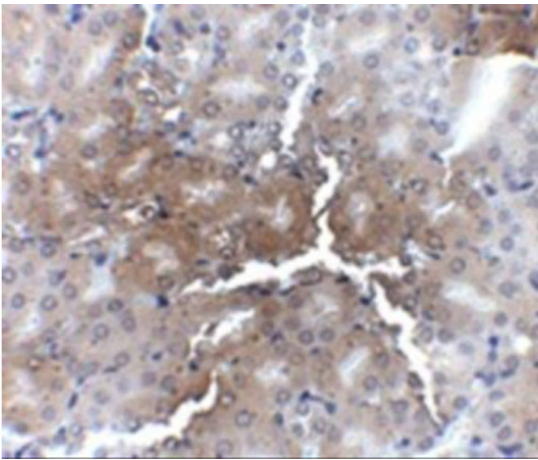
Shipping & Handling

Shipping Condition:	Dry Ice
----------------------------	---------

Storage Condition: Store vial at -20° C prior to opening. Aliquot contents and freeze at -20° C or below for extended storage. Avoid cycles of freezing and thawing. Centrifuge product if not completely clear after standing at room temperature. This product is stable for several weeks at 4° C as an undiluted liquid. Dilute only prior to immediate use.

Expiration: Expiration date is one (1) year from date of receipt.

Images

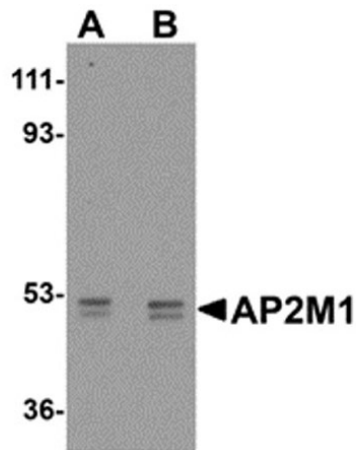


Immunohistochemistry

Immunohistochemistry of AP2M1.

Tissue: mouse kidney tissue.

Primary Antibody: Anti-AP2M1 antibody at 2.5 µg/mL.

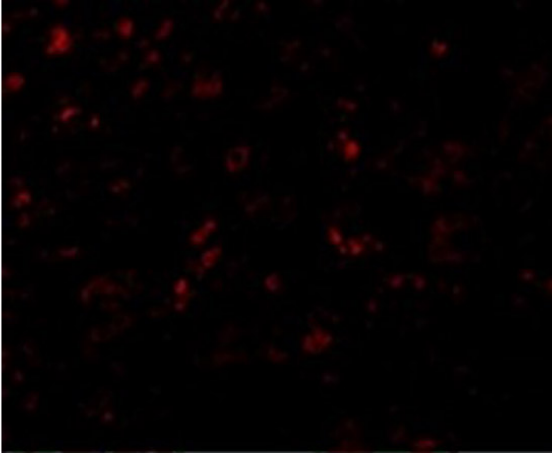


Western Blot

Western blot analysis of AP2M1.

Load: human kidney tissue lysate per lane.

Primary Antibody: Anti-AP2M1 antibody at (A) 1 µg/mL and (B) 2 µg/mL.

**Immunofluorescence Microscopy**

Immunofluorescence of AP2M1.

Cell: Mouse Kidney cells.

Primary Antibody: Anti-AP2M1 antibody at 20 µg/mL.

Disclaimer

This product is for research use only and is not intended for therapeutic or diagnostic applications. Please contact a technical service representative for more information. All products of animal origin manufactured by Rockland Immunochemicals are derived from starting materials of North American origin. Collection was performed in United States Department of Agriculture (USDA) inspected facilities and all materials have been inspected and certified to be free of disease and suitable for exportation. All properties listed are typical characteristics and are not specifications. All suggestions and data are offered in good faith but without guarantee as conditions and methods of use of our products are beyond our control. All claims must be made within 30 days following the date of delivery. The prospective user must determine the suitability of our materials before adopting them on a commercial scale. Suggested uses of our products are not recommendations to use our products in violation of any patent or as a license under any patent of Rockland Immunochemicals, Inc. If you require a commercial license to use this material and do not have one, then return this material, unopened to: Rockland Inc., P.O. BOX 5199, Limerick, Pennsylvania, USA.