

Datasheet for 600-601-J51**STIM2 Antibody****Overview**

Description:	Anti-STIM2 (SHEEP) Antibody - 600-601-J51
Item No.:	600-601-J51
Size:	100 µg
Applications:	IHC
Reactivity:	Human
Host Species:	Sheep

Product Details

Background:	Stim II antibody functions as a calcium sensor in the endoplasmic reticulum via its EF-hand domain. After depletion of Ca ²⁺ , it is thought to translocate from the endoplasmic reticulum to the plasma membrane to activate the calcium release-activated channel subunit. It may inhibit STIM1-mediated calcium influx. Anti-Stim II antibody is ideal for investigators interested in Signal Transduction research.
Synonyms:	sheep anti-Stim2 Antibody, STIM 2, STIM-2, Stromal interaction molecule 2
Host Species:	Sheep
Clonality:	Polyclonal
Format:	IgG

Target Details

Gene Name:	STIM2
Reactivity:	Human
Immunogen Type:	Conjugated Peptide
Immunogen:	Stim II affinity purified antibody was prepared from whole sheep serum produced by repeated immunizations with a synthetic peptide near the C-terminus of human Stim II.

Purity/Specificity: Anti-Stim II was affinity purified from monospecific antiserum by immunoaffinity chromatography. A BLAST analysis was used to suggest cross-reactivity with mouse and human based on 100% sequence homology. Cross-reactivity with Stim II from other sources has not been determined.

Relevant Links:

- [UniProtKB - Q9P246](#)

Application Details

Tested Applications: IHC

Application Note: Anti-Stim II antibody is tested for ELISA and immunohistochemistry and suitable for Western Blot. Specific conditions for reactivity should be optimized by the end user. Expect a band approximately ~84kDa corresponding to the appropriate cell lysate or extract.

Assay Dilutions: All assays should be optimized by the user. Recommended dilutions (if any) may be listed below.

ELISA: 1: 10,000

IHC: 5 µg/mL

WB: 1ug/ml

Formulation

Physical State: Liquid (sterile filtered)

Concentration: 1.1 mg/mL by UV absorbance at 280 nm

Buffer: 0.02 M Potassium Phosphate, 0.15 M Sodium Chloride, pH 7.2

Preservative: None

Stabilizer: 30% Glycerol

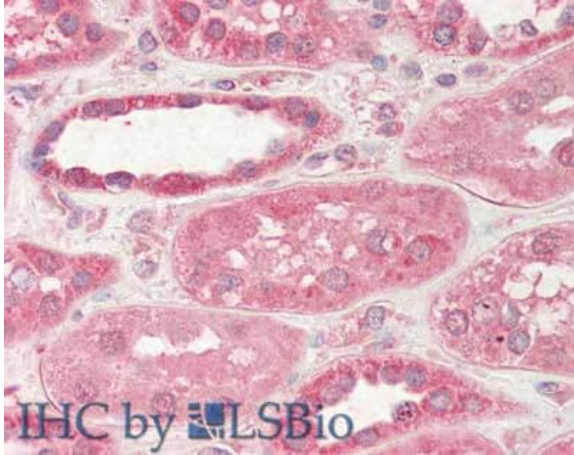
Shipping & Handling

Shipping Condition: Dry Ice

Storage Condition: Store vial at -20° C prior to opening. Aliquot contents and freeze at -20° C or below for extended storage. Avoid cycles of freezing and thawing. Centrifuge product if not completely clear after standing at room temperature. This product is stable for several weeks at 4° C as an undiluted liquid. Dilute only prior to immediate use.

Expiration: Expiration date is one (1) year from date of receipt.

Images



Immunohistochemistry

Immunohistochemistry of Sheep anti-STIM2 antibody.
Tissue: Kidney. Fixation: formalin fixed paraffin embedded.
Antigen retrieval: not required. Primary antibody: STIM2 antibody at 5 µg/mL for 1 h at RT. Secondary antibody: Peroxidase sheep secondary antibody at 1:10,000 for 45 min at RT. Staining: STIM2 as precipitated red signal with hematoxylin purple nuclear counterstain.

Disclaimer

This product is for research use only and is not intended for therapeutic or diagnostic applications. Please contact a technical service representative for more information. All products of animal origin manufactured by Rockland Immunochemicals are derived from starting materials of North American origin. Collection was performed in United States Department of Agriculture (USDA) inspected facilities and all materials have been inspected and certified to be free of disease and suitable for exportation. All properties listed are typical characteristics and are not specifications. All suggestions and data are offered in good faith but without guarantee as conditions and methods of use of our products are beyond our control. All claims must be made within 30 days following the date of delivery. The prospective user must determine the suitability of our materials before adopting them on a commercial scale. Suggested uses of our products are not recommendations to use our products in violation of any patent or as a license under any patent of Rockland Immunochemicals, Inc. If you require a commercial license to use this material and do not have one, then return this material, unopened to: Rockland Inc., P.O. BOX 5199, Limerick, Pennsylvania, USA.