

Datasheet for 600-601-D00

Vesicular Monoamine Transporter 2 (VMAT2) Antibody

Overview

Description:	Anti-Vesicular Monoamine Transporter 2 (VMAT2) (Sheep) Antibody - 600-601-D00
Item No.:	600-601-D00
Size:	100 µL
Applications:	WB
Reactivity:	Rat
Host Species:	Sheep

Product Details

Background:	Vesicular Monoamine Transporter 2 antibody recognizes Vesicular neurotransmitter transporter which sequesters the transmitters into synaptic vesicles. The vesicular monoamine transporter 2 (VMAT2) is responsible for catecholamine and serotonin storage in central synapses. Antibodies specific for VMAT have been used to monitor expression of the transporter during development and in aging and can be effectively used as a marker for monoamine terminals. Therefore, VMAT2 antibody is ideal for investigators involved in Neuronal plasticity and, more generally in Neuroscience.
Synonyms:	Synaptic vesicular amine transporter, Monoamine transporter, Solute carrier family 18 member 2, Vesicular amine transporter 2, VAT2, Slc18a2, Svat, Vmat2
Host Species:	Sheep
Clonality:	Polyclonal
Format:	IgG

Target Details

Gene Name:	Slc18a2
Reactivity:	Rat
Immunogen Type:	Conjugated Peptide
Immunogen:	Anti-Vesicular Monoamine Transporter 2 Antibody was produced in sheep by repeated immunizations with synthetic peptide corresponding to amino acid residues from the intracellular C-terminal region conjugated to KLH.

Purity/Specificity: Anti-Vesicular Monoamine Transporter 2 antibody was affinity purified from monospecific antiserum by immunoaffinity purification. Anti-Vesicular Monoamine Transporter 2 Antibody is directed against rat Vesicular Monoamine Transporter 2. Cross reactivity expected with human; reactivity with Vesicular Monoamine Transporter 2 from other species has not been determined.

Relevant Links:

- [NCBI - NP_037163.1](#)
- [UniProtKB - Q01827](#)
- [GeneID - 25549](#)

Application Details

Tested Applications: WB

Application Note: Anti-VMAT2 antibody is tested for use in ELISA and Western Blotting. Specific conditions for reactivity should be optimized by the end user. Expect a band of approximately 57 kDa in size corresponding to VMAT2 protein in Western Blot of rat caudate lysate.

Assay Dilutions: All assays should be optimized by the user. Recommended dilutions (if any) may be listed below.

ELISA: 1:10,000

WB: 1:1000

Formulation

Physical State: Liquid

Buffer: 0.01 M HEPES, 0.15 M Sodium Chloride, pH 7.5

Stabilizer: 0.1 mg/ml Bovine Serum Albumin (BSA) - IgG and Protease free, 50% (v/v) Glycerol

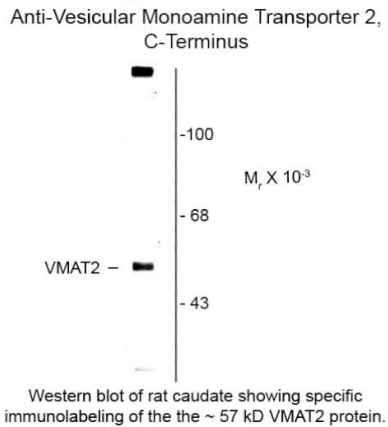
Shipping & Handling

Shipping Condition: Dry Ice

Storage Condition: Store vial at -20° C prior to opening. This product is stable at 4° C as an undiluted liquid. For extended storage, aliquot contents and freeze at -20° C or below. Avoid cycles of freezing and thawing. Dilute only prior to immediate use.

Expiration: Expiration date is one (1) year from date of receipt.

Images



Western Blot

Western Blot of Sheep anti-Vesicular Monoamine Transporter 2 C-terminus antibody. Lane 1: rat caudate lysate. Lane 2: none. Load: 10 µg per lane. Primary antibody: Vesicular Monoamine Transporter 2 C-terminus antibody at 1:1,000 for overnight at 4°C. Secondary antibody: IRDye800™ sheep secondary antibody at 1:10,000 for 45 min at RT. Block: 5% BLOTTO overnight at 4°C. Predicted/Observed size: 57 kDa for Vesicular Monoamine Transporter 2 C-terminus. Other band(s): Vesicular Monoamine Transporter 2 C-terminus splice variants and isoforms.

Disclaimer

This product is for research use only and is not intended for therapeutic or diagnostic applications. Please contact a technical service representative for more information. All products of animal origin manufactured by Rockland Immunochemicals are derived from starting materials of North American origin. Collection was performed in United States Department of Agriculture (USDA) inspected facilities and all materials have been inspected and certified to be free of disease and suitable for exportation. All properties listed are typical characteristics and are not specifications. All suggestions and data are offered in good faith but without guarantee as conditions and methods of use of our products are beyond our control. All claims must be made within 30 days following the date of delivery. The prospective user must determine the suitability of our materials before adopting them on a commercial scale. Suggested uses of our products are not recommendations to use our products in violation of any patent or as a license under any patent of Rockland Immunochemicals, Inc. If you require a commercial license to use this material and do not have one, then return this material, unopened to: Rockland Inc., P.O. BOX 5199, Limerick, Pennsylvania, USA.