

Datasheet for 600-409-200**GST Antibody Texas Red™ Conjugated****Overview**

Description:	Anti-GST (RABBIT) Antibody Texas Red™ Conjugated - 600-409-200
Item No.:	600-409-200
Size:	100 µg
Applications:	WB
Reactivity:	GST-Tag
Host Species:	Rabbit

Product Details

Background:	GST (Glutathione-S-Transferase) is a protein expression tag commonly used in molecular biology. Anti-GST will react with synthetic construct present in most known GST containing cloning or expression vectors. GST is responsible for the conjugation of reduced glutathione to a wide number of exogenous and endogenous hydrophobic electrophiles. The amino acid sequence GST is highly conserved in most organisms including mammals. GST exists as a 26 kDa homodimer. This product is designed for immunofluorescence microscopy, fluorescence based plate assays (FLISA) and fluorescent western blotting. This product is also suitable for multiplex analysis, including multicolor imaging, utilizing various commercial platforms.
Synonyms:	rabbit anti-GST antibody Texas Red™ conjugation, Texas Red™ conjugated rabbit anti-GST antibody, Glutathione-S-Transferase
Host Species:	Rabbit
Conjugate:	Texas Red®
Clonality:	Polyclonal
Format:	IgG
F/P Ratio:	4.8

Target Details

Reactivity:	GST-Tag
Immunogen Type:	Native Protein

Immunogen:	The immunogen is full length GST isolated from Schistosoma japonicum.
Purity/Specificity:	Texas Red Conjugated Anti-GST antibody was prepared from monospecific antiserum by immunoaffinity chromatography using GST coupled to agarose beads followed by solid phase adsorption(s) to remove any unwanted reactivities and extensive dialysis against the buffer stated above. Assay by immunoelectrophoresis resulted in a single precipitin arc against anti-Rabbit Serum, as well as purified and partially purified Glutathione-S-Transferase [Schistosoma japonicum]. Cross reactivity against Glutathione-S-Transferase from other sources may occur but has not been specifically determined.

Application Details

Tested Applications:	WB
Application Note:	Anti-GST Texas Red Conjugated Antibody has been tested by western blot and is suitable for immunomicroscopy and flow cytometry or FACS analysis as well as other antibody based fluorescent assays requiring lot-to-lot consistency.
Assay Dilutions:	All assays should be optimized by the user. Recommended dilutions (if any) may be listed below.
ELISA:	1:60,000
FC:	User Optimized
IF:	User Optimized
WB:	1:2,000 - 1:10,000

Formulation

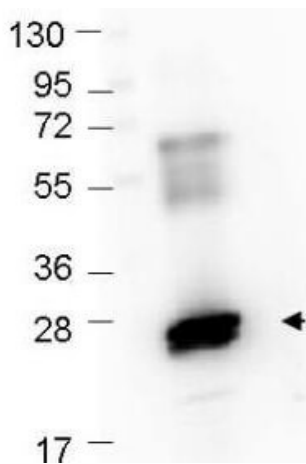
Physical State:	Lyophilized
Concentration:	1.0 mg/mL by UV absorbance at 280 nm
Buffer:	0.02 M Potassium Phosphate, 0.15 M Sodium Chloride, pH 7.2
Preservative:	0.01% (w/v) Sodium Azide
Stabilizer:	10 mg/mL Bovine Serum Albumin (BSA) - Immunoglobulin and Protease free
Reconstitution Volume:	100 µL
Reconstitution Buffer:	Restore with deionized water (or equivalent)

Shipping & Handling

Shipping Condition:	Ambient
----------------------------	---------

Storage Condition:	Store Texas Red Conjugated Anti-GST antibody at 4° C prior to restoration. For extended storage aliquot contents and freeze at -20° C or below. Avoid cycles of freezing and thawing. Centrifuge product if not completely clear after standing at room temperature. GST antibody is stable for several weeks at 4° C as an undiluted liquid. Dilute only prior to immediate use.
Expiration:	Expiration date is one (1) year from date of receipt.

Images



Western Blot

Western Blot showing detection of recombinant GST protein (0.25 µg) in lane 2. MW markers are in lane 1. Protein was run on a 4-20% gel, then transferred to 0.45 µm nitrocellulose. After blocking with 1% BSA-TTBS (p/n MB-013, diluted to 1X) overnight at 4°C, unconjugated primary antibody was used at 1:1000 at room temperature for 30 min. HRP-conjugated Goat-Anti-Rabbit (p/n 611-103-122) secondary antibody was used at 1:40,000 in MB-070 blocking buffer and imaged on the VersaDoc™ MP 4000 imaging system (Bio-Rad).

Disclaimer

This product is for research use only and is not intended for therapeutic or diagnostic applications. Please contact a technical service representative for more information. All products of animal origin manufactured by Rockland Immunochemicals are derived from starting materials of North American origin. Collection was performed in United States Department of Agriculture (USDA) inspected facilities and all materials have been inspected and certified to be free of disease and suitable for exportation. All properties listed are typical characteristics and are not specifications. All suggestions and data are offered in good faith but without guarantee as conditions and methods of use of our products are beyond our control. All claims must be made within 30 days following the date of delivery. The prospective user must determine the suitability of our materials before adopting them on a commercial scale. Suggested uses of our products are not recommendations to use our products in violation of any patent or as a license under any patent of Rockland Immunochemicals, Inc. If you require a commercial license to use this material and do not have one, then return this material, unopened to: Rockland Inc., P.O. BOX 5199, Limerick, Pennsylvania, USA.