

Datasheet for 600-406-263

## Phosphothreonine Antibody Biotin Conjugated

### Overview

<b>Description:</b>	Anti-PhosphoThreonine (pT) (RABBIT) Antibody Biotin Conjugated - 600-406-263
<b>Item No.:</b>	600-406-263
<b>Size:</b>	100 µg
<b>Applications:</b>	ELISA, WB
<b>Reactivity:</b>	Phosphothreonine
<b>Host Species:</b>	Rabbit

### Product Details

<b>Background:</b>	Phospho-Threonine Antibody detects proteins and peptides phosphorylated at threonine residues in a manner largely independent of the surrounding amino acid sequence. Phosphorylation of threonine residues is associated with many growth factors and oncogene protein kinases, and is important for cell signaling in activation, proliferation and differentiation.
<b>Synonyms:</b>	PhosphoThreonine (pT) reactive antibody PhosphoThreonine (pT) polyclonal antibody, PhosphoThreonine antibody produced in rabbit
<b>Host Species:</b>	Rabbit
<b>Conjugate:</b>	Biotin
<b>Clonality:</b>	Polyclonal
<b>Format:</b>	IgG

### Target Details

<b>Reactivity:</b>	Phosphothreonine
<b>Immunogen Type:</b>	Other
<b>Immunogen:</b>	PhosphoThreonine affinity-purified antibody was prepared from whole rabbit serum produced by repeated immunizations with phosphothreonine conjugated KLH.

**Purity/Specificity:** Anti-PhosphoThreonine was prepared from monospecific antiserum by immunoaffinity chromatography using phosphorylated threonine peptide coupled to agarose followed by conjugation to biotin and subsequent purification. Assay by immunoelectrophoresis resulted in a single precipitin arc against anti-Rabbit IgG and anti-Biotin. Reactivity is specific for phosphothreonine and minimal cross reactivity is observed against phosphotyrosine or phosphoserine.

**Relevant Links:**

- [600-406-263 SDS](tel:600-406-263)

## Application Details

**Tested Applications:** ELISA, WB

**Application Note:** PhosphoThreonine affinity-purified antibody is tested for use in ELISA and western blotting assays. The antibody reacts specifically with phosphothreonine and shows minimal reactivity by ELISA and western blotting with proteins containing phosphotyrosine or phosphoserine residues. The antibody reacts with free phosphothreonine, phosphothreonine conjugated to carriers such as thyroglobulin or BSA, and detects the presence of phosphothreonine in proteins of both unstimulated and stimulated cell lysates. Although not tested, this antibody is likely functional in RIA, flow cytometry and immunohistochemistry.

**Assay Dilutions:** All assays should be optimized by the user. Recommended dilutions (if any) may be listed below.

**ELISA:** 1:5,000

**IHC:** User Optimized

**IP:** User Optimized

**WB:** 1:500

## Formulation

**Physical State:** Liquid (sterile filtered)

**Concentration:** 1 mg/mL by UV absorbance at 280 nm

**Buffer:** 0.02 M Potassium Phosphate, 0.15 M Sodium Chloride, pH 7.2

**Preservative:** 0.01% (w/v) Sodium Azide

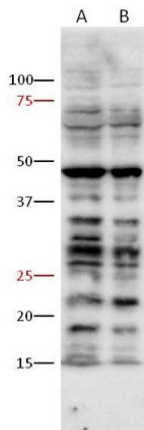
**Stabilizer:** 50% (v/v) Glycerol

## Shipping & Handling

**Shipping Condition:** Wet Ice

<b>Storage Condition:</b>	Store anti-pT antibody at 4° C prior to opening. This product is stable for several weeks at 4° C as an undiluted liquid. Dilute only prior to immediate use. For extended storage aliquot contents and freeze at -20° C or below. Avoid cycles of freezing and thawing.
<b>Expiration:</b>	Expiration date is one (1) year from date of receipt.

## Images



### Western Blot

Western Blot of Anti-PhosphoThreonine (pT) Antibody Biotin Conjugated.

Load: SP2/0 myeloma cells activated with FBS 10mins after serum free starvation overnight (Lane A: 12 $\mu$ L and Lane B: 4 $\mu$ L whole cell lysates).

Primary Antibody: Anti-PhosphoThreonine (pT) Antibody Biotin Conjugated.

Secondary Antibody: Rabbit Anti-Biotin Peroxidase Conjugated.

## Disclaimer

This product is for research use only and is not intended for therapeutic or diagnostic applications. Please contact a technical service representative for more information. All products of animal origin manufactured by Rockland Immunochemicals are derived from starting materials of North American origin. Collection was performed in United States Department of Agriculture (USDA) inspected facilities and all materials have been inspected and certified to be free of disease and suitable for exportation. All properties listed are typical characteristics and are not specifications. All suggestions and data are offered in good faith but without guarantee as conditions and methods of use of our products are beyond our control. All claims must be made within 30 days following the date of delivery. The prospective user must determine the suitability of our materials before adopting them on a commercial scale. Suggested uses of our products are not recommendations to use our products in violation of any patent or as a license under any patent of Rockland Immunochemicals, Inc. If you require a commercial license to use this material and do not have one, then return this material, unopened to: Rockland Inc., P.O. BOX 5199, Limerick, Pennsylvania, USA.