

Datasheet for 600-401-Z98**BUB1 Antibody****Overview**

Description:	Anti-BUB1 (RABBIT) Antibody - 600-401-Z98
Item No.:	600-401-Z98
Size:	100 µg
Applications:	ELISA, IF, IHC, WB
Reactivity:	Human, Mouse
Host Species:	Rabbit

Product Details

Background: Bub1 was initially identified as the mammalian homolog to the yeast protein through a cDNA screen. Bub1 encodes a kinase involved in the formation of the spindle checkpoint, an important mechanism that ensures high fidelity mitotic chromosome segregation. It is thought to be required for assembly of a functional inner centromere, sister chromatid cohesion via targeting of the Shugoshim protein and metaphase congression. Bub1 functions by phosphorylating cdc20, a member of the mitotic checkpoint complex and activating the spindle checkpoint. A related protein kinase Bub3 interacts with Bub1 and targets it to kinetochores prior to chromosome alignment. Mutations in bub1 have been associated with aneuploidy and several forms of cancer.

Synonyms:	Bub1 Antibody, BUB1A, BUB1L, hBUB1, BUB1A
Host Species:	Rabbit
Clonality:	Polyclonal
Format:	IgG

Target Details

Gene Name:	BUB1
Reactivity:	Human, Mouse
Immunogen Type:	Conjugated Peptide

Immunogen:	Anti-Bub1 antibody was prepared from whole rabbit serum produced by repeated immunizations with a 19 amino acid synthetic peptide from near the N-terminus of human Bub1.
Purity/Specificity:	Anti-Bub1 Antibody was affinity purified from monospecific antiserum by immunoaffinity chromatography. Cross reactivity with Bub1 from other sources has not been determined.
Relevant Links:	<ul style="list-style-type: none">• UniProtKB - O43683• GenelD - 699• NCBI - NP_001265546.1

Application Details

Tested Applications:	ELISA, IF, IHC, WB
Application Note:	Anti-Bub1 Antibody has been tested for use in ELISA, Western Blotting, Immunocytochemistry and Immunofluorescence. Specific conditions for reactivity should be optimized by the end user. Expect a band at approximately 122 kDa in Western Blots of specific cell lysates and tissues.
Assay Dilutions:	All assays should be optimized by the user. Recommended dilutions (if any) may be listed below.
ELISA:	1:20,000 - 1:40,000
IF:	20 µg/mL
WB:	2-4 µg/mL

Formulation

Physical State:	Liquid (sterile filtered)
Concentration:	1 mg/mL by UV absorbance at 280 nm
Buffer:	0.01 M Sodium Phosphate, 0.25 M Sodium Chloride, pH 7.2
Preservative:	0.02% (w/v) Sodium Azide
Stabilizer:	None

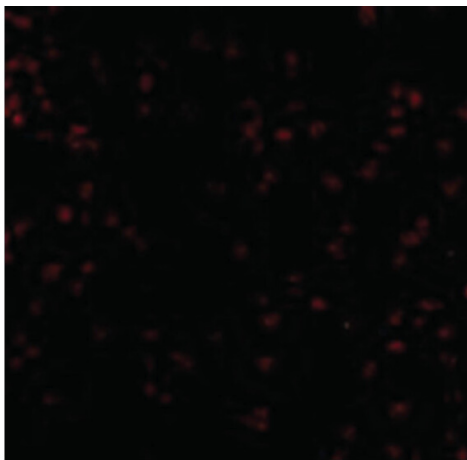
Shipping & Handling

Shipping Condition:	Dry Ice
----------------------------	---------

Storage Condition: Store vial at -20° C prior to opening. Aliquot contents and freeze at -20° C or below for extended storage. Avoid cycles of freezing and thawing. Centrifuge product if not completely clear after standing at room temperature. This product is stable for several weeks at 4° C as an undiluted liquid. Dilute only prior to immediate use.

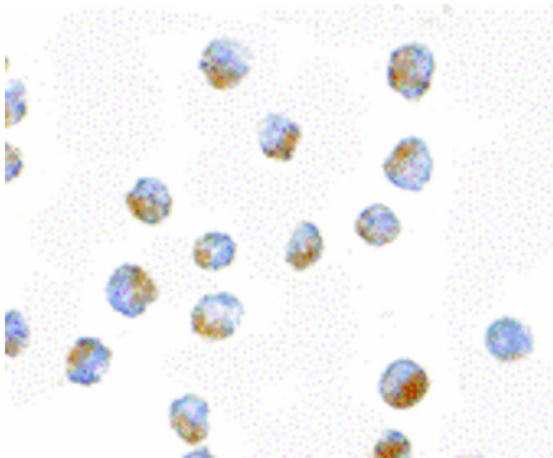
Expiration: Expiration date is one (1) year from date of receipt.

Images



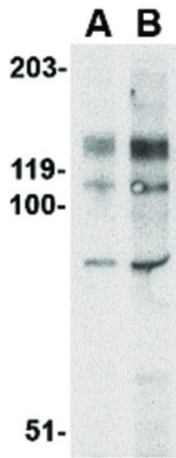
Immunofluorescence Microscopy

Immunofluorescence Microscopy of Bub1 antibody. Tissue: A20 cells. Fixation: 0.5% PFA. Antigen retrieval: not required. Primary antibody: Bub1 antibody at 20 µg/mL for 1 h at RT. Secondary antibody: Fluorescein rabbit secondary antibody at 1:10,000 for 45 min at RT. Staining: Bub1 as a red fluorescent signal.



Immunocytochemistry

Immunocytochemistry of Bub1 antibody. Tissue: A20 cells. Fixation: formalin fixed paraffin embedded. Antigen retrieval: not required. Primary antibody: Bub1 antibody at 10 µg/mL for 1 h at RT. Secondary antibody: Peroxidase rabbit secondary antibody at 1:10,000 for 45 min at RT. Localization: Bub1 is nuclear and occasionally cytoplasmic. Staining: Bub1 as a precipitated brown signal with hematoxylin purple counterstain.

**Western Blot**

Western Blot of Bub1 antibody. Lane A: A20 cell lysate at 2 µg/mL. Lane B: A20 cell lysate at 4 µg/mL. Load: 35 µg per lane. Secondary antibody: Peroxidase rabbit secondary antibody at 1:10,000 for 45 min at RT. Block: 5% BLOTTO overnight at 4°C. Predicted/Observed size: 122.3 kDa, ~122 kDa for Bub1. Other band(s): Bub1 splice variants and isoforms.

Disclaimer

This product is for research use only and is not intended for therapeutic or diagnostic applications. Please contact a technical service representative for more information. All products of animal origin manufactured by Rockland Immunochemicals are derived from starting materials of North American origin. Collection was performed in United States Department of Agriculture (USDA) inspected facilities and all materials have been inspected and certified to be free of disease and suitable for exportation. All properties listed are typical characteristics and are not specifications. All suggestions and data are offered in good faith but without guarantee as conditions and methods of use of our products are beyond our control. All claims must be made within 30 days following the date of delivery. The prospective user must determine the suitability of our materials before adopting them on a commercial scale. Suggested uses of our products are not recommendations to use our products in violation of any patent or as a license under any patent of Rockland Immunochemicals, Inc. If you require a commercial license to use this material and do not have one, then return this material, unopened to: Rockland Inc., P.O. BOX 5199, Limerick, Pennsylvania, USA.