

Datasheet for 600-401-Z73**Bim EL Antibody****Overview**

| | |
|----------------------|---|
| Description: | Anti-Bim EL (RABBIT) Antibody - 600-401-Z73 |
| Item No.: | 600-401-Z73 |
| Size: | 100 µg |
| Applications: | ELISA, IF, IHC, WB |
| Reactivity: | Human, Mouse, Rat |
| Host Species: | Rabbit |

Product Details

| | |
|----------------------|--|
| Background: | Members in the Bcl-2 family are critical regulators of apoptosis by either inhibiting or promoting cell death. Bcl-2 homology 3 (BH3) domain is a potent death domain. BH3 domain containing pro-apoptotic proteins, including Bad, Bax, Bid, Bik, and Hrk, form a growing subclass of the Bcl-2 family. Bim, also known as Bcl-2-like protein 11, is a pro-apoptotic member of this family and interacts with diverse members in the pro-survival Bcl-2 sub-family including Bcl-2, Bcl-xL and Bcl-w. Multiple isoforms of Bim are known to exist, with Bim EL being the longest isoform (1,2). |
| Synonyms: | Bim EL Antibody, BAM, BIM, BOD, Bcl-2-like protein 11, Bcl2-interacting mediator of cell death, Bcl2-L-11 |
| Host Species: | Rabbit |
| Clonality: | Polyclonal |
| Format: | IgG |

Target Details

| | |
|------------------------|---|
| Gene Name: | BCL2L11 |
| Reactivity: | Human, Mouse, Rat |
| Immunogen Type: | Conjugated Peptide |
| Immunogen: | Anti-Bim EL antibody was prepared from whole rabbit serum produced by repeated immunizations with a peptide corresponding to 15 amino acids near the N-terminus of human Bim. |

| | |
|----------------------------|---|
| Purity/Specificity: | Anti-Bim EL Antibody was affinity purified from monospecific antiserum by immunoaffinity chromatography. Bim EL antibody is human and mouse reactive. Multiple isoforms of Bim are known to exist; this antibody only detects the Bim EL isoform. |
| Relevant Links: | <ul style="list-style-type: none">• UniProtKB - O43521• GeneID - 10018• NCBI - NP_619527 |

Application Details

| | |
|-----------------------------|---|
| Tested Applications: | ELISA, IF, IHC, WB |
| Application Note: | Anti-Bim EL Antibody has been tested for use in ELISA, Western Blotting, Immunocytochemistry and Immunofluorescence. Specific conditions for reactivity should be optimized by the end user. Expect a band at approximately 22 kDa in Western Blots of specific cell lysates and tissues. |
| Assay Dilutions: | All assays should be optimized by the user. Recommended dilutions (if any) may be listed below. |
| ELISA: | 1:10,000 - 1:20,000 |
| IF: | User Optimized |
| WB: | 1 - 2 µg/mL |

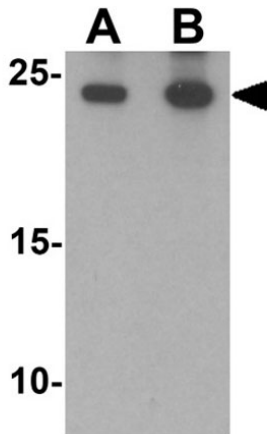
Formulation

| | |
|------------------------|---|
| Physical State: | Liquid (sterile filtered) |
| Concentration: | 1 mg/mL by UV absorbance at 280 nm |
| Buffer: | 0.01 M Sodium Phosphate, 0.25 M Sodium Chloride, pH 7.2 |
| Preservative: | 0.02% (w/v) Sodium Azide |
| Stabilizer: | None |

Shipping & Handling

| | |
|----------------------------|---|
| Shipping Condition: | Dry Ice |
| Storage Condition: | Store vial at -20° C prior to opening. Aliquot contents and freeze at -20° C or below for extended storage. Avoid cycles of freezing and thawing. Centrifuge product if not completely clear after standing at room temperature. This product is stable for several weeks at 4° C as an undiluted liquid. Dilute only prior to immediate use. |
| Expiration: | Expiration date is one (1) year from date of receipt. |

Images

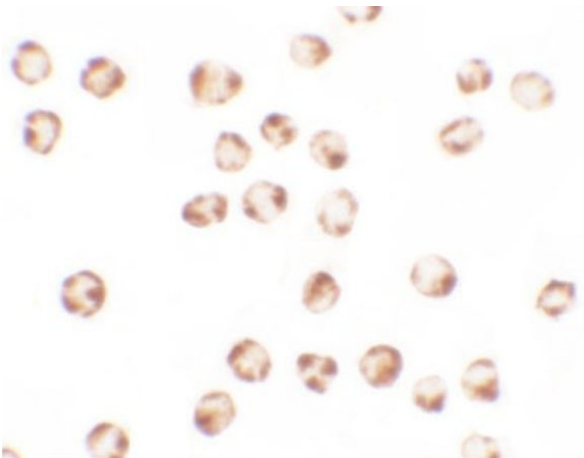


Western Blot

Western blot of Bim EL.

Load: K562 cell lysate.

Primary Antibody: Bim EL antibody at (A) 1 and (B) 2 $\mu\text{g}/\text{mL}$.

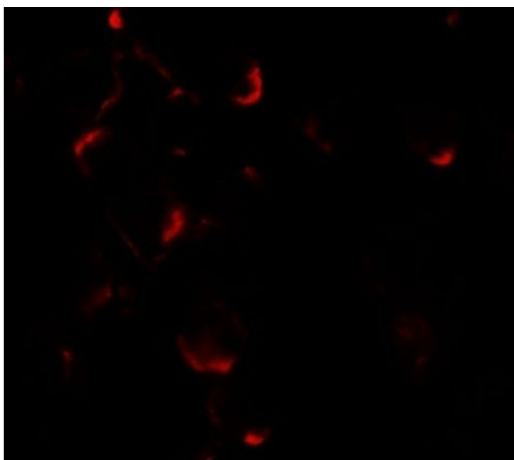


Immunocytochemistry

Immunocytochemistry of BIM EL.

Cell: K562 cells.

Primary Antibody: BIM EL antibody at 2.5 $\mu\text{g}/\text{ml}$.



Immunofluorescence Microscopy

Immunofluorescence of BIM EL.

Cell: K562 cells.

Primary Antibody: BIM EL antibody at 2.5 $\mu\text{g}/\text{ml}$.

Disclaimer

This product is for research use only and is not intended for therapeutic or diagnostic applications. Please contact a technical service representative for more information. All products of animal origin manufactured by Rockland Immunochemicals are derived from starting materials of North American origin. Collection was performed in United States Department of Agriculture (USDA) inspected facilities and all materials have been inspected and certified to be free of disease and suitable for exportation. All properties listed are typical characteristics and are not specifications. All suggestions and data are offered in good faith but without guarantee as conditions and methods of use of our products are beyond our control. All claims must be made within 30 days following the date of delivery. The prospective user must determine the suitability of our materials before adopting them on a commercial scale. Suggested uses of our products are not recommendations to use our products in violation of any patent or as a license under any patent of Rockland Immunochemicals, Inc. If you require a commercial license to use this material and do not have one, then return this material, unopened to: Rockland Inc., P.O. BOX 5199, Limerick, Pennsylvania, USA.