

Datasheet for 600-401-Z67**BIF Antibody****Overview**

Description:	Anti-BIF (RABBIT) Antibody - 600-401-Z67
Item No.:	600-401-Z67
Size:	100 µg
Applications:	ELISA, IHC, WB
Reactivity:	Human, Mouse
Host Species:	Rabbit

Product Details

Background:	Apoptosis plays a major role in normal organism development, tissue homeostasis, and removal of damaged cells and is caused by the activation of proteolytic enzymes termed caspases. Proteins that comprise the Bcl-2 family such as Bax appear to control the activation of these enzymes. Bax activity was found to be regulated by its association with Bax-interacting factor 1 (BIF), a member of the endophilin B family that is associated with intracellular membranes. Following this interaction, Bax undergoes a conformational change and translocates to mitochondrial membranes. The Bax/BIF interaction appears to be enhanced by apoptotic stimuli, suggesting that BIF acts as the trigger to activate Bax, and as suppression of BIF promoted HeLa cell colony formation in soft agar, it may have a role in the suppression of cancer progression. At least two isoforms of BIF are known to exist.
Synonyms:	Bif Antibody, Bif-1, CGI-61, PPP1R70, dJ612B15.2, KIAA0491, Endophilin-B1, Bax-interacting factor 1, Bif-1
Host Species:	Rabbit
Clonality:	Polyclonal
Format:	IgG

Target Details

Gene Name:	SH3GLB1
Reactivity:	Human, Mouse
Immunogen Type:	Conjugated Peptide

Immunogen:	Anti-BIF antibody was prepared from whole rabbit serum produced by repeated immunizations with a 15 amino acid synthetic peptide from near the C-terminus of human BIF.
Purity/Specificity:	Anti-Bif Antibody was affinity purified from monospecific antiserum by immunoaffinity chromatography. Cross reactivity with Bif from other sources has not been determined.
Relevant Links:	<ul style="list-style-type: none">• UniProtKB - Q9Y371• GeneID - 51100• NCBI - AAK27365

Application Details

Tested Applications:	ELISA, IHC, WB
Application Note:	Anti-Bif Antibody has been tested for use in ELISA, Western Blotting, Immunocytochemistry. Specific conditions for reactivity should be optimized by the end user. Expect a band at approximately 41 kDa in Western Blots of specific cell lysates and tissues.
Assay Dilutions:	All assays should be optimized by the user. Recommended dilutions (if any) may be listed below.
ELISA:	1:10,000 - 1:20,000
WB:	1 - 2 µg/mL

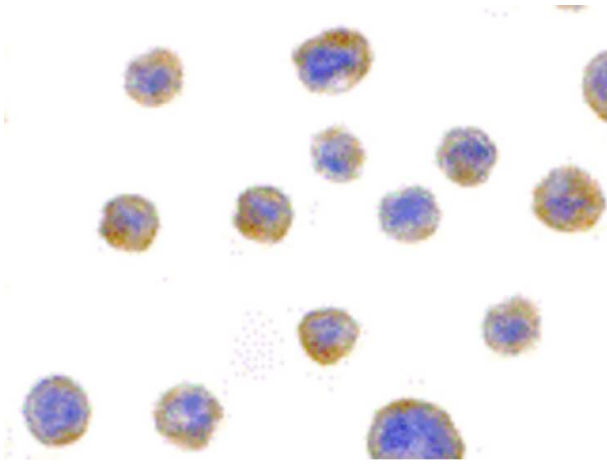
Formulation

Physical State:	Liquid (sterile filtered)
Concentration:	1 mg/mL by UV absorbance at 280 nm
Buffer:	0.01 M Sodium Phosphate, 0.25 M Sodium Chloride, pH 7.2
Preservative:	0.02% (w/v) Sodium Azide
Stabilizer:	None

Shipping & Handling

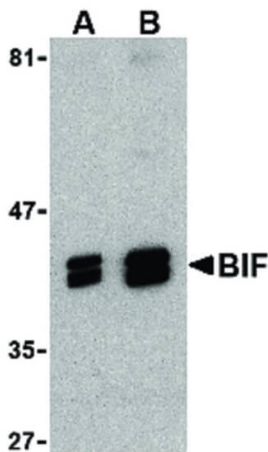
Shipping Condition:	Dry Ice
Storage Condition:	Store vial at -20° C prior to opening. Aliquot contents and freeze at -20° C or below for extended storage. Avoid cycles of freezing and thawing. Centrifuge product if not completely clear after standing at room temperature. This product is stable for several weeks at 4° C as an undiluted liquid. Dilute only prior to immediate use.
Expiration:	Expiration date is one (1) year from date of receipt.

Images



Immunohistochemistry

Immunocytochemistry of BIF antibody. Cell Type: HeLa cells. Fixation: formalin fixed paraffin embedded. Antigen retrieval: not required. Primary antibody: BIF antibody at 10 µg/mL for 1 h at RT. Secondary antibody: Peroxidase rabbit secondary antibody at 1:10,000 for 45 min at RT. Localization: BIF is located in the cytoplasm, golgi apparatus, cell membrane, mitochondrion, and mitochondrion outer membrane. Staining: BIF is stained brown with hematoxylin purple nuclear counterstain.



Western Blot

Western Blot of BIF antibody in HeLa cell lysate. Lane A: BIF antibody at 1 µg/mL. Lane B: BIF antibody at 2 µg/mL. Load: 35 µg per lane. Primary antibody: BIF antibody at designated concentrations for overnight at 4°C. Secondary antibody: Peroxidase rabbit secondary antibody at 1:10,000 for 45 min at RT. Block: 5% BLOTTO overnight at 4°C. Predicted/Observed size: 41 kDa, 38 kDa for BIF. Other band(s): BIF splice variants and isoforms.

Disclaimer

This product is for research use only and is not intended for therapeutic or diagnostic applications. Please contact a technical service representative for more information. All products of animal origin manufactured by Rockland Immunochemicals are derived from starting materials of North American origin. Collection was performed in United States Department of Agriculture (USDA) inspected facilities and all materials have been inspected and certified to be free of disease and suitable for exportation. All properties listed are typical characteristics and are not specifications. All suggestions and data are offered in good faith but without guarantee as conditions and methods of use of our products are beyond our control. All claims must be made within 30 days following the date of delivery. The prospective user must determine the suitability of our materials before adopting them on a commercial scale. Suggested uses of our products are not recommendations to use our products in violation of any patent or as a license under any patent of Rockland Immunochemicals, Inc. If you require a commercial license to use this material and do not have one, then return this material, unopened to: Rockland Inc., P.O. BOX 5199, Limerick, Pennsylvania, USA.