

Datasheet for 600-401-Z62**BICD1 Antibody****Overview**

Description:	Anti-BICD1 (RABBIT) Antibody - 600-401-Z62
Item No.:	600-401-Z62
Size:	100 µg
Applications:	ELISA, IF, IHC, WB
Reactivity:	Human, Mouse, Rat
Host Species:	Rabbit

Product Details

Background:	BICD1 was initially identified as the human homolog to Drosophila Bicaudal-D protein that forms part of the cytoskeleton and mediates the correct sorting of mRNAs for oocyte- and axis-determining factors during oogenesis. BICD1 can bind to dynein-dynactin and co-localizes with Rab6A on the trans-Golgi network and cytoplasmic vesicles, suggesting BICD1 regulates COPI-independent Golgi-ER transport. BICD1 will also interact with Rab6B, a Rab6 isoform that is expressed primarily in brain. Live cell imaging showed bi-directional movement of Rab6B structures in SK-N-SH neurites, indicating that BICD1 is involved in the Rab6B regulation of retrograde cargo transport in neuronal cells.
Synonyms:	BICD1 Antibody, BICD, Protein bicaudal D homolog 1, Bic-D 1
Host Species:	Rabbit
Clonality:	Polyclonal
Format:	IgG

Target Details

Gene Name:	BICD1
Reactivity:	Human, Mouse, Rat
Immunogen Type:	Conjugated Peptide
Immunogen:	Anti-BICD1 antibody was prepared from whole rabbit serum produced by repeated immunizations with a 15 amino acid synthetic peptide from near the C-terminus of human BICD1.

Purity/Specificity: Anti-BICD1 Antibody was affinity purified from monospecific antiserum by immunoaffinity chromatography. At least two isoforms of BICD1 are known to exist; this antibody will only recognize the larger isoform.

Relevant Links:

- [UniProtKB - Q96G01](#)
- [GeneID - 636](#)
- [NCBI - NP_001705](#)

Application Details

Tested Applications: ELISA, IF, IHC, WB

Application Note: Anti-BICD1 Antibody has been tested for use in ELISA, Western Blotting, Immunocytochemistry and Immunofluorescence. Specific conditions for reactivity should be optimized by the end user. Expect a band at approximately 111 kDa in Western Blots of specific cell lysates and tissues.

Assay Dilutions: All assays should be optimized by the user. Recommended dilutions (if any) may be listed below.

ELISA: 1:10,000

IF: 10 µg/mL

WB: 1 µg/mL

Formulation

Physical State: Liquid (sterile filtered)

Concentration: 1 mg/mL by UV absorbance at 280 nm

Buffer: 0.01 M Sodium Phosphate, 0.25 M Sodium Chloride, pH 7.2

Preservative: 0.02% (w/v) Sodium Azide

Stabilizer: None

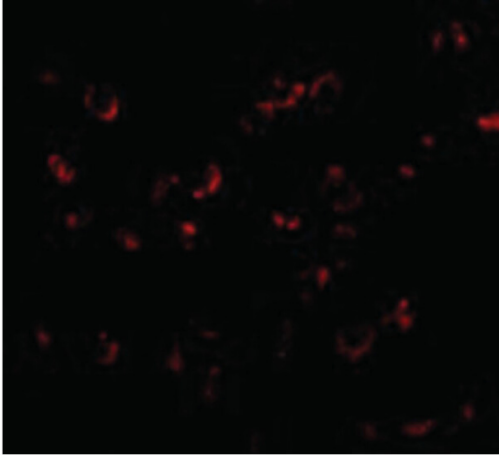
Shipping & Handling

Shipping Condition: Dry Ice

Storage Condition: Store vial at -20° C prior to opening. Aliquot contents and freeze at -20° C or below for extended storage. Avoid cycles of freezing and thawing. Centrifuge product if not completely clear after standing at room temperature. This product is stable for several weeks at 4° C as an undiluted liquid. Dilute only prior to immediate use.

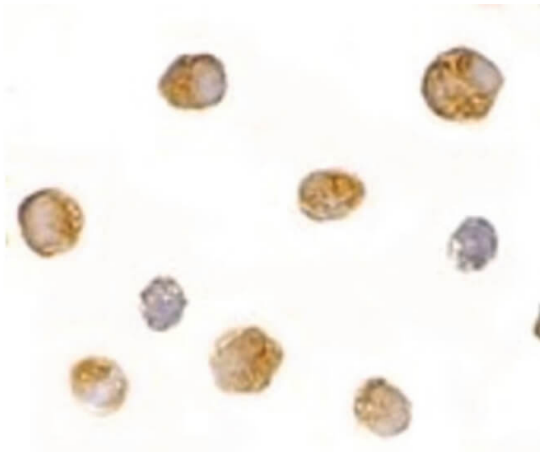
Expiration: Expiration date is one (1) year from date of receipt.

Images



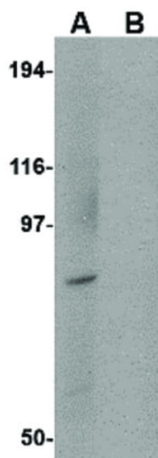
Immunofluorescence Microscopy

Immunofluorescence Microscopy of BICD1 antibody. Tissue: Daudi cells. Fixation: 0.5% PFA. Antigen retrieval: not required. Primary antibody: BICD1 antibody at 20 $\mu\text{g}/\text{mL}$ for 1 h at RT. Secondary antibody: Fluorescein rabbit secondary antibody at 1:10,000 for 45 min at RT. Staining: BICD1 as a red fluorescent signal.



Immunocytochemistry

Immunocytochemistry of BICD1 antibody. Tissue: Daudi cells. Fixation: formalin fixed paraffin embedded. Antigen retrieval: not required. Primary antibody: BICD1 antibody at 2.5 $\mu\text{g}/\text{mL}$ for 1 h at RT. Secondary antibody: Peroxidase rabbit secondary antibody at 1:10,000 for 45 min at RT. Localization: BICD1 is nuclear and occasionally cytoplasmic. Staining: BICD1 as precipitated brown signal with hematoxylin purple counterstain.



Western Blot

Western Blot of BICD1 antibody. Lane A: Daudi cell lysate in the absence of blocking peptide. Lane B: Daudi cell lysate in the presence of blocking peptide. Load: 35 μg per lane. Primary Antibody: Anti-BICD1 at 1 $\mu\text{g}/\text{mL}$. Secondary antibody: Peroxidase rabbit secondary antibody at 1:10,000 for 45 min at RT. Block: 5% BLOTTO overnight at 4°C. Predicted/Observed size: 110.7 kDa, ~90 kDa for BICD1.

Disclaimer

This product is for research use only and is not intended for therapeutic or diagnostic applications. Please contact a technical service representative for more information. All products of animal origin manufactured by Rockland Immunochemicals are derived from starting materials of North American origin. Collection was performed in United States Department of Agriculture (USDA) inspected facilities and all materials have been inspected and certified to be free of disease and suitable for exportation. All properties listed are typical characteristics and are not specifications. All suggestions and data are offered in good faith but without guarantee as conditions and methods of use of our products are beyond our control. All claims must be made within 30 days following the date of delivery. The prospective user must determine the suitability of our materials before adopting them on a commercial scale. Suggested uses of our products are not recommendations to use our products in violation of any patent or as a license under any patent of Rockland Immunochemicals, Inc. If you require a commercial license to use this material and do not have one, then return this material, unopened to: Rockland Inc., P.O. BOX 5199, Limerick, Pennsylvania, USA.