

**Datasheet for 600-401-Z61****BHLHA15 Antibody****Overview**

<b>Description:</b>	Anti-BHLHA15 (RABBIT) Antibody - 600-401-Z61
<b>Item No.:</b>	600-401-Z61
<b>Size:</b>	100 µg
<b>Applications:</b>	ELISA, IF, IHC, WB
<b>Reactivity:</b>	Human, Mouse, Rat
<b>Host Species:</b>	Rabbit

**Product Details**

<b>Background:</b>	BHLHA15 (basic helix-loop-helix protein 15), also known as MIST1 (muscle intestine and stomach expression 1) belongs to the bHLH family of transcription factors and plays a role in regulating the transcriptional activity of MYOD1 in muscle cell development as well as serving as a key regulator of acinar cell function (1,2). BHLHA15 contains a basic helix-loop-helix (bHLH) domain and is capable of binding to E-box motifs as a homodimer or a heterodimer with E-proteins. It may also negatively regulate bHLH-mediated transcription through a N-terminal repressor domain (3). It is expressed in mammary epithelial cells and is essential for the regulation of mammary gland development (4).
<b>Synonyms:</b>	BHLHA15 Antibody, MIST1, BHLHB8, MIST1, Class A basic helix-loop-helix protein 15, Class B basic helix-loop-helix protein 8, bHLHa15
<b>Host Species:</b>	Rabbit
<b>Clonality:</b>	Polyclonal
<b>Format:</b>	IgG

**Target Details**

<b>Gene Name:</b>	BHLHA15
<b>Reactivity:</b>	Human, Mouse, Rat
<b>Immunogen Type:</b>	Conjugated Peptide
<b>Immunogen:</b>	Anti-BHLHA15 antibody was prepared from whole rabbit serum produced by repeated immunizations with a 18 amino acid peptide near the internal region of human BHLHA15.

**Purity/Specificity:** Anti-BHLHA15 antibody was affinity purified from monospecific antiserum by immunoaffinity chromatography. BHLHA15 antibody is human, mouse and rat reactive.

**Relevant Links:**

- [UniProtKB - Q7RTS1](#)
- [GeneID - 168620](#)
- [NCBI - NP\\_803238](#)

## Application Details

**Tested Applications:** ELISA, IF, IHC, WB

**Application Note:** Anti-BHLHA15 Antibody has been tested for use in ELISA, Western Blotting, Immunohistochemistry and Immunofluorescence. Specific conditions for reactivity should be optimized by the end user. Expect a band at approximately 21 kDa in Western Blots of specific cell lysates and tissues.

**Assay Dilutions:** All assays should be optimized by the user. Recommended dilutions (if any) may be listed below.

**ELISA:** 1:10,000 - 1:20,000

**IF:** 20 µg/mL

**IHC:** 5 µg/mL

**WB:** 1 - 2 µg/mL

## Formulation

**Physical State:** Liquid (sterile filtered)

**Concentration:** 1.0mg/ml by UV absorbance at 280 nm

**Buffer:** 0.01 M Sodium Phosphate, 0.25 M Sodium Chloride, pH 7.2

**Preservative:** 0.02% (w/v) Sodium Azide

**Stabilizer:** None

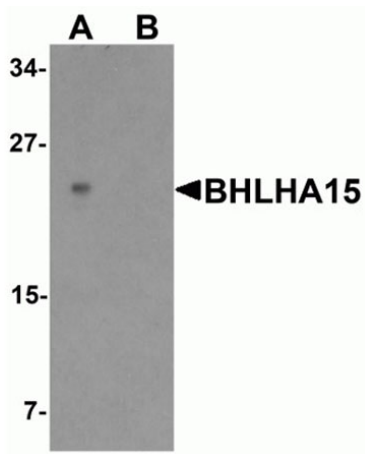
## Shipping & Handling

**Shipping Condition:** Dry Ice

**Storage Condition:** Store vial at -20° C prior to opening. Aliquot contents and freeze at -20° C or below for extended storage. Avoid cycles of freezing and thawing. Centrifuge product if not completely clear after standing at room temperature. This product is stable for several weeks at 4° C as an undiluted liquid. Dilute only prior to immediate use.

**Expiration:** Expiration date is one (1) year from date of receipt.

## Images

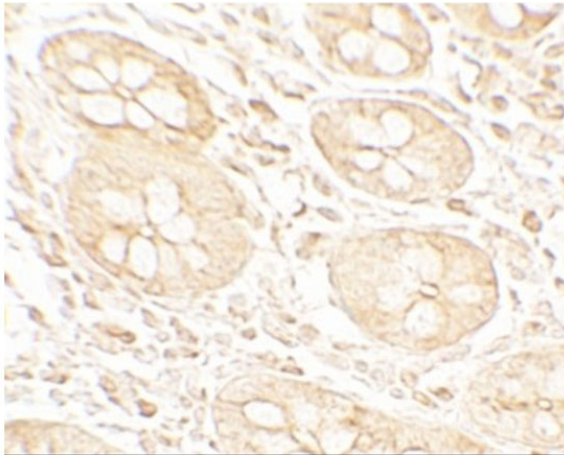


### Western Blot

Western blot of BHLHA15.

Load: rat small Intestine tissue lysate.

Primary Antibody: BHLHA15 antibody at 1  $\mu\text{g}/\text{ml}$  in (A) the absence and (B) the presence of blocking peptide.

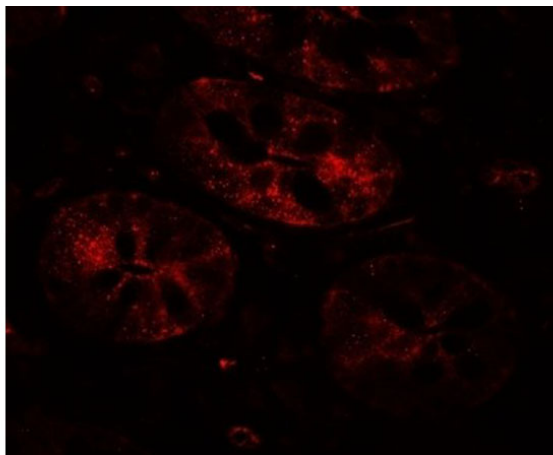


### Immunohistochemistry

Immunohistochemistry of BHLHA15.

Tissue: human small intestine tissue.

Primary Antibody: BHLHA15 antibody at 5  $\mu\text{g}/\text{mL}$ .

**Immunofluorescence Microscopy**

Immunofluorescence of BHLHA15.

Tissue: human small intestine tissue.

Primary Antibody: BHLHA15 antibody at 20 µg/mL.

**Disclaimer**

This product is for research use only and is not intended for therapeutic or diagnostic applications. Please contact a technical service representative for more information. All products of animal origin manufactured by Rockland Immunochemicals are derived from starting materials of North American origin. Collection was performed in United States Department of Agriculture (USDA) inspected facilities and all materials have been inspected and certified to be free of disease and suitable for exportation. All properties listed are typical characteristics and are not specifications. All suggestions and data are offered in good faith but without guarantee as conditions and methods of use of our products are beyond our control. All claims must be made within 30 days following the date of delivery. The prospective user must determine the suitability of our materials before adopting them on a commercial scale. Suggested uses of our products are not recommendations to use our products in violation of any patent or as a license under any patent of Rockland Immunochemicals, Inc. If you require a commercial license to use this material and do not have one, then return this material, unopened to: Rockland Inc., P.O. BOX 5199, Limerick, Pennsylvania, USA.