

Datasheet for 600-401-Z49**BCL-RAMBO Antibody****Overview**

Description:	Anti-BCL-RAMBO (RABBIT) Antibody - 600-401-Z49
Item No.:	600-401-Z49
Size:	100 µg
Applications:	ELISA, IF, IHC, WB
Reactivity:	Human, Mouse, Rat
Host Species:	Rabbit

Product Details

Background: Apoptosis plays a major role in normal organism development, tissue homeostasis, and removal of damaged cells. Disruption of this process has been implicated in a variety of diseases such as cancer. Members of the Bcl-2 family are known to be critical regulators of this process. These proteins are characterized by the presence of several conserved motifs termed Bcl-2 homology (BH) domains. A novel, widely expressed member termed Bcl-rambo was recently identified. This protein is localized to mitochondria in mammalian cells and its overexpression induces apoptosis which could be blocked by co-expression of inhibitor of apoptosis proteins (IAPs) such as XIAP, cIAP1, and cIAP2. Bcl-rambo shows overall homology to the anti-apoptotic members containing BH motifs, but unlike Bcl-2, the C-terminal membrane anchor of Bcl-rambo is preceded by a unique 250 amino acid insertion. This region by itself can induce apoptosis more efficiently than the Bcl-2 homology regions, suggesting that Bcl-rambo may be important other pro-apoptotic pathways.

Synonyms:	Bcl-rambo Antibody, MIL1, BCL-RAMBO, Bcl2-L-13, MIL1, CD003, Bcl-2-like protein 13, Bcl-rambo
Host Species:	Rabbit
Clonality:	Polyclonal
Format:	IgG

Target Details

Gene Name:	BCL2L13
Reactivity:	Human, Mouse, Rat

Immunogen Type:	Conjugated Peptide
Immunogen:	Anti-Bcl-rambo antibody was prepared from whole rabbit serum produced by repeated immunizations with a 15 amino acid synthetic peptide from near the internal region of human Bcl-rambo.
Purity/Specificity:	Anti-Bcl-rambo Antibody was affinity purified from monospecific antiserum by immunoaffinity chromatography. Cross reactivity with Bcl-rambo from other sources has not been determined.
Relevant Links:	<ul style="list-style-type: none">• UniProtKB - Q9BXK5• GenelD - 23786• NCBI - AAH07658

Application Details

Tested Applications:	ELISA, IF, IHC, WB
Application Note:	Anti-Bcl-rambo Antibody has been tested for use in ELISA, Western Blotting, Immunohistochemistry and Immunofluorescence. Specific conditions for reactivity should be optimized by the end user. Expect a band at approximately 53 kDa in Western Blots of specific cell lysates and tissues.
Assay Dilutions:	All assays should be optimized by the user. Recommended dilutions (if any) may be listed below.
ELISA:	1:20,000 - 1:40,000
IF:	20 µg/mL
IHC:	10 µg/mL
WB:	2 - 4 µg/mL

Formulation

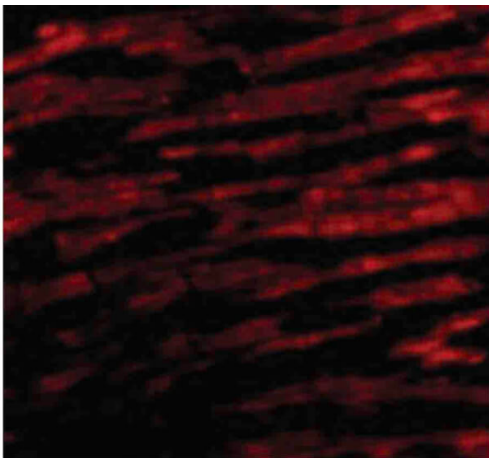
Physical State:	Liquid (sterile filtered)
Concentration:	1.0mg/mL by UV absorbance at 280 nm
Buffer:	0.01 M Sodium Phosphate, 0.25 M Sodium Chloride, pH 7.2
Preservative:	0.02% (w/v) Sodium Azide
Stabilizer:	None

Shipping & Handling

Shipping Condition:	Dry Ice
----------------------------	---------

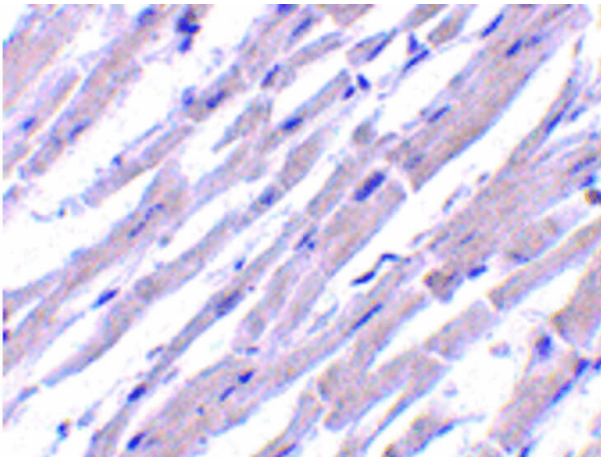
Storage Condition:	Store vial at -20° C prior to opening. Aliquot contents and freeze at -20° C or below for extended storage. Avoid cycles of freezing and thawing. Centrifuge product if not completely clear after standing at room temperature. This product is stable for several weeks at 4° C as an undiluted liquid. Dilute only prior to immediate use.
Expiration:	Expiration date is one (1) year from date of receipt.

Images



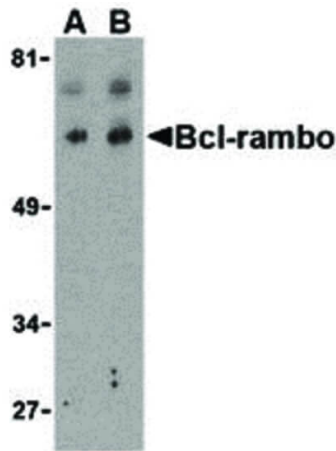
Immunofluorescence Microscopy

Immunofluorescence Microscopy of Bcl-rambo antibody. Cell Type: human heart cells. Fixation: 0.5% PFA. Antigen retrieval: not required. Primary antibody: Bcl-rambo antibody at 20 µg/mL for 1 h at RT. Secondary antibody: Fluorescein rabbit secondary antibody at 1:10,000 for 45 min at RT. Localization: Bcl-rambo is mitochondrial and nuclear. Staining: Bcl-rambo as red fluorescent signal.



Immunohistochemistry

Immunohistochemistry of Bcl-rambo antibody. Tissue: human heart tissue. Fixation: formalin fixed paraffin embedded. Antigen retrieval: not required. Primary antibody: Bcl-rambo antibody at 10 µg/mL for 1 h at RT. Secondary antibody: Peroxidase rabbit secondary antibody at 1:10,000 for 45 min at RT. Localization: Bcl-rambo is nuclear and mitochondrial. Staining: Bcl-rambo stained with hematoxylin purple nuclear counterstain.

**Western Blot**

Western Blot of Bcl-rambo antibody. Lane A: K562 cell lysate at 2 µg/ml. Lane B: K562 cell lysate at 4 µg/ml. Load: 35 µg per lane. Primary antibody: Bcl-rambo antibody at designated concentrations for overnight at 4°C. Secondary antibody: Peroxidase rabbit secondary antibody at 1:10,000 for 45 min at RT. Block: 5% BLOTTO overnight at 4°C. Predicted/Observed size: 53 kDa, 65 kDa for Bcl-rambo. Other band(s): Bcl-rambo splice variants and isoforms.

Disclaimer

This product is for research use only and is not intended for therapeutic or diagnostic applications. Please contact a technical service representative for more information. All products of animal origin manufactured by Rockland Immunochemicals are derived from starting materials of North American origin. Collection was performed in United States Department of Agriculture (USDA) inspected facilities and all materials have been inspected and certified to be free of disease and suitable for exportation. All properties listed are typical characteristics and are not specifications. All suggestions and data are offered in good faith but without guarantee as conditions and methods of use of our products are beyond our control. All claims must be made within 30 days following the date of delivery. The prospective user must determine the suitability of our materials before adopting them on a commercial scale. Suggested uses of our products are not recommendations to use our products in violation of any patent or as a license under any patent of Rockland Immunochemicals, Inc. If you require a commercial license to use this material and do not have one, then return this material, unopened to: Rockland Inc., P.O. BOX 5199, Limerick, Pennsylvania, USA.