

Datasheet for 600-401-Z42**BCL10 Antibody****Overview**

Description:	Anti-BCL10 (RABBIT) Antibody - 600-401-Z42
Item No.:	600-401-Z42
Size:	100 µg
Applications:	ELISA, IF, IHC, WB
Reactivity:	Human, Mouse, Rat
Host Species:	Rabbit

Product Details

Background:	Apoptosis is related to many diseases including cancer. Cell death signals are transduced by death domain (DD) and caspase recruitment domain (CARD) containing molecules and a caspase family of proteases. CARD containing cell death regulators include ARC, RAIDD, Apaf-1, caspase-9, and caspase-2. A novel CARD containing protein was recently identified by several groups and designated Bcl10, CIPER, mE10, CARMEN, CLAP. Bcl10 is a cellular homolog of the equine herpesvirus-2 E-10 gene. Overexpression of Bcl10 induces JNK, p38, and NF-κB activation. Bcl10 interacts with caspase-9 and enhances pro-caspase-9 processing and induces apoptosis through caspase-9 activation. Bcl10 exhibits a variety of mutations in MALT lymphomas and in B and T cell lineage lymphomas indicating that it may be commonly involved in the pathogenesis of human malignancy. Bcl10 is expressed in many human and murine tissues and cell lines.
Synonyms:	Bcl-10 Antibody, CLAP, mE10, CIPER, c-E10, CARMEN, CLAP, CARD-containing molecule enhancing NF-kappa-B, Bcl-10
Host Species:	Rabbit
Clonality:	Polyclonal
Format:	IgG

Target Details

Gene Name:	BCL10
Reactivity:	Human, Mouse, Rat
Immunogen Type:	Conjugated Peptide

Immunogen:	Anti-Bcl10 antibody was prepared from whole rabbit serum produced by repeated immunizations with a peptide corresponding to amino acids near the N-terminus of human Bcl10.
Purity/Specificity:	Anti-Bcl-10 Antibody was affinity purified from monospecific antiserum by immunoaffinity chromatography. Cross reactivity with Bcl-10 from other sources has not been determined.
Relevant Links:	<ul style="list-style-type: none">• UniProtKB - O95999• GeneID - 8915• NCBI - AF134395

Application Details

Tested Applications:	ELISA, IF, IHC, WB
Application Note:	Anti-Bcl-10 Antibody has been tested for use in ELISA, Western Blotting, Immunocytochemistry and Immunofluorescence. Specific conditions for reactivity should be optimized by the end user. Expect a band at approximately 22 kDa in Western Blots of specific cell lysates and tissues.
Assay Dilutions:	All assays should be optimized by the user. Recommended dilutions (if any) may be listed below.
ELISA:	1:10,000-1:20,000
IF:	10 µg/mL
IHC:	User Optimized
IP:	User Optimized
WB:	1-2 µg/mL

Formulation

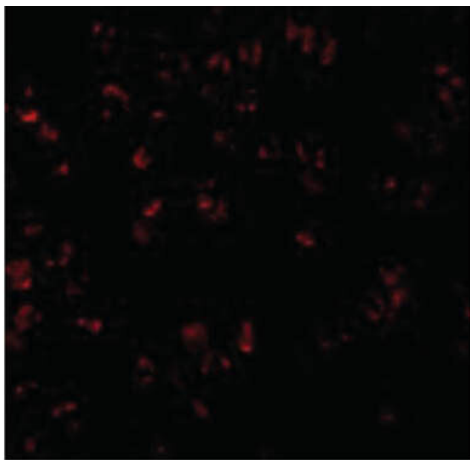
Physical State:	Liquid (sterile filtered)
Concentration:	1.0 mg/ml by UV absorbance at 280 nm
Buffer:	0.01 M Sodium Phosphate, 0.25 M Sodium Chloride, pH 7.2
Preservative:	0.02% (w/v) Sodium Azide
Stabilizer:	None

Shipping & Handling

Shipping Condition:	Dry Ice
----------------------------	---------

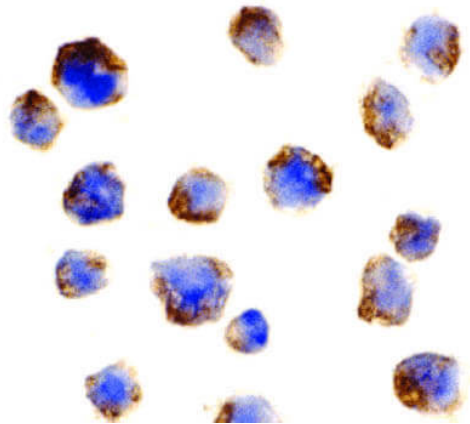
Storage Condition:	Store vial at -20° C prior to opening. Aliquot contents and freeze at -20° C or below for extended storage. Avoid cycles of freezing and thawing. Centrifuge product if not completely clear after standing at room temperature. This product is stable for several weeks at 4° C as an undiluted liquid. Dilute only prior to immediate use.
Expiration:	Expiration date is one (1) year from date of receipt.

Images



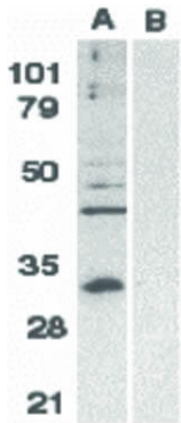
Immunofluorescence Microscopy

Immunofluorescence Microscopy of Bcl-10 antibody.
Tissue: Raji cells. Fixation: 0.5% PFA. Antigen retrieval: not required. Primary antibody: Bcl-10 antibody at 10 µg/mL for 1 h at RT. Secondary antibody: Fluorescein rabbit secondary antibody at 1:10,000 for 45 min at RT.
Localization: Bcl-10 is cytoplasmic and occasionally nuclear.
Staining: E2F-1 pS364 as red fluorescent signal.



Immunocytochemistry

Immunocytochemistry of Bcl-10 Cells: Raji cells. Fixation: formalin fixed paraffin embedded. Antigen retrieval: not required. Primary antibody: Bcl-10 antibody at 1 µg/mL for 1 h at RT. Secondary antibody: Peroxidase rabbit secondary antibody at 1:10,000 for 45 min at RT. Localization: Bcl-10 is cytoplasmic and occasionally nuclear. Staining: Bcl-10 as precipitated brown signal with hematoxylin blue nuclear counterstain.

**Western Blot**

Western Blot of Bcl-10 antibody. Lane 1: Raji whole cell lysate. Lane 2: Raji whole cell lysate in the presence of blocking peptide. Load: 35 µg per lane. Primary antibody: Bcl-10 antibody at 1:500 for overnight at 4°C. Secondary antibody: Peroxidase rabbit secondary antibody at 1:10,000 for 45 min at RT. Block: 5% BLOTTO overnight at 4°C. Predicted/Observed size: 26.3 kDa, 31 kDa for Bcl-10 Other band(s): Bcl-10 splice variants and isoforms.

Disclaimer

This product is for research use only and is not intended for therapeutic or diagnostic applications. Please contact a technical service representative for more information. All products of animal origin manufactured by Rockland Immunochemicals are derived from starting materials of North American origin. Collection was performed in United States Department of Agriculture (USDA) inspected facilities and all materials have been inspected and certified to be free of disease and suitable for exportation. All properties listed are typical characteristics and are not specifications. All suggestions and data are offered in good faith but without guarantee as conditions and methods of use of our products are beyond our control. All claims must be made within 30 days following the date of delivery. The prospective user must determine the suitability of our materials before adopting them on a commercial scale. Suggested uses of our products are not recommendations to use our products in violation of any patent or as a license under any patent of Rockland Immunochemicals, Inc. If you require a commercial license to use this material and do not have one, then return this material, unopened to: Rockland Inc., P.O. BOX 5199, Limerick, Pennsylvania, USA.