

Datasheet for 600-401-Z31**BAP3 Antibody****Overview**

Description:	Anti-BAP3 (RABBIT) Antibody - 600-401-Z31
Item No.:	600-401-Z31
Size:	100 µg
Applications:	ELISA, IHC, WB
Reactivity:	Human
Host Species:	Rabbit

Product Details

Background: BAP3 was initially identified through interaction in a yeast two-hybrid system with the brain-specific angiogenesis inhibitor 1, a p53-target gene that encodes a seven-span transmembrane protein member of the secretin receptor family. BAP3 is predominantly expressed in the brain and possess high homology with Munc13 and synaptotagmin, suggesting that BAP3 may play a role in regulating neurotransmitter release. Recent experiments have shown that BAP3 is induced in certain tumors such as desmoplastic small round cell tumor. Ectopic expression of BAP3 in tumor cells dramatically enhances growth in low serum conditions and colony formation in soft agar, suggesting that the regulated exocytotic pathway may play a role in cancer cell proliferation.

Synonyms:	BAP3 Antibody, BAP3, KIAA0734, BAI1-associated protein 3, BAP3
Host Species:	Rabbit
Clonality:	Polyclonal
Format:	IgG

Target Details

Gene Name:	BAIAP3
Reactivity:	Human
Immunogen Type:	Conjugated Peptide

Immunogen:	Anti-BAP3 antibody was prepared from whole rabbit serum produced by repeated immunizations with a 13 amino acid synthetic peptide from near the N-terminus of human BAP3.
Purity/Specificity:	Anti-BAP3 Antibody was affinity purified from monospecific antiserum by immunoaffinity chromatography. BAP3 is known to have two isoforms; this BAP3 antibody will recognize only isoform 2. Lower molecular weight bands may represent cleavage or degradation products.
Relevant Links:	<ul style="list-style-type: none">• UniProtKB - O94812• GeneID - 8938• NCBI - BAA34710

Application Details

Tested Applications:	ELISA, IHC, WB
Application Note:	Anti-BAP3 Antibody has been tested for use in ELISA, Western Blotting, and Immunohistochemistry. Specific conditions for reactivity should be optimized by the end user. Expect a band at approximately 132 kDa in Western Blots of specific cell lysates and tissues.
Assay Dilutions:	All assays should be optimized by the user. Recommended dilutions (if any) may be listed below.
ELISA:	1:10,000 - 1:20,000
IHC:	5 µg/mL
WB:	1 - 2 µg/mL

Formulation

Physical State:	Liquid (sterile filtered)
Concentration:	1 mg/mL by UV absorbance at 280 nm
Buffer:	0.01 M Sodium Phosphate, 0.25 M Sodium Chloride, pH 7.2
Preservative:	0.02% (w/v) Sodium Azide
Stabilizer:	None

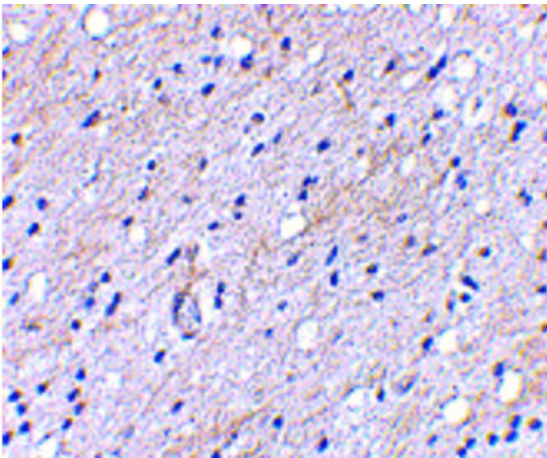
Shipping & Handling

Shipping Condition:	Dry Ice
----------------------------	---------

Storage Condition: Store vial at -20° C prior to opening. Aliquot contents and freeze at -20° C or below for extended storage. Avoid cycles of freezing and thawing. Centrifuge product if not completely clear after standing at room temperature. This product is stable for several weeks at 4° C as an undiluted liquid. Dilute only prior to immediate use.

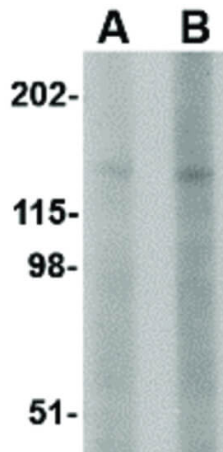
Expiration: Expiration date is one (1) year from date of receipt.

Images



Immunohistochemistry

Immunohistochemistry of BAP3 antibody. Tissue: Human brain tissue. Fixation: formalin fixed paraffin embedded. Antigen retrieval: not required. Primary antibody: BAP3 antibody at 5 µg/mL for 1 h at RT. Secondary antibody: Peroxidase rabbit secondary antibody at 1:10,000 for 45 min at RT. Localization: BAP3 is nuclear and occasionally cytoplasmic. Staining: BAP3 as a precipitated red signal with hematoxylin purple nuclear counterstain.



Western Blot

Western Blot of BAP3 antibody. Lane A: SK-N-SH cell lysate at 1 µg/mL. Lane B: SK-N-SH cell lysate at 2 µg/mL. Load: 35 µg per lane. Secondary antibody: Peroxidase rabbit secondary antibody at 1:10,000 for 45 min at RT. Block: 5% BLOTTO overnight at 4°C. Predicted/Observed size: 131.9 kDa, ~130 kDa for BAP3.

Disclaimer

This product is for research use only and is not intended for therapeutic or diagnostic applications. Please contact a technical service representative for more information. All products of animal origin manufactured by Rockland Immunochemicals are derived from starting materials of North American origin. Collection was performed in United States Department of Agriculture (USDA) inspected facilities and all materials have been inspected and certified to be free of disease and suitable for exportation. All properties listed are typical characteristics and are not specifications. All suggestions and data are offered in good faith but without guarantee as conditions and methods of use of our products are beyond our control. All claims must be made within 30 days following the date of delivery. The prospective user must determine the suitability of our materials before adopting them on a commercial scale. Suggested uses of our products are not recommendations to use our products in violation of any patent or as a license under any patent of Rockland Immunochemicals, Inc. If you require a commercial license to use this material and do not have one, then return this material, unopened to: Rockland Inc., P.O. BOX 5199, Limerick, Pennsylvania, USA.