

**Datasheet for 600-401-Y69****ASK1 Antibody****Overview**

<b>Description:</b>	Anti-ASK1 (RABBIT) Antibody - 600-401-Y69
<b>Item No.:</b>	600-401-Y69
<b>Size:</b>	100 µg
<b>Applications:</b>	ELISA, IF, IHC, WB
<b>Reactivity:</b>	Human, Mouse
<b>Host Species:</b>	Rabbit

**Product Details**

<b>Background:</b>	Mitogen-activated protein (MAP) kinase cascades are activated in response to various extracellular stimuli, including cytokines, growth factors and environmental stresses. A novel MAP kinase kinase kinase (MAPKKK) was recently identified and designated ASK1 (for apoptosis signal-regulating kinase 1) and MAPKKK5. ASK1 activated two different subgroups of MAPKK, MKK4 and MKK6, which in turn activated c-Jun N-terminal kinase (JNK) and p38 MAP kinase, respectively. ASK1/MAPKKK5 is activated by TNFR and Fas through the interaction with members of the TRAF family and Fas-associated protein Daxx. Overexpression of ASK1 induced apoptotic cell death, and a catalytically inactive form of ASK1 inhibited TNF- $\alpha$ -induced apoptosis. ASK1 is expressed in variety of tissues and cell lines.
<b>Synonyms:</b>	ASK1 Antibody, ASK1, MEKK5, MAPKKK5, ASK1, Mitogen-activated protein kinase kinase kinase 5, Apoptosis signal-regulating kinase 1, ASK-1
<b>Host Species:</b>	Rabbit
<b>Clonality:</b>	Polyclonal
<b>Format:</b>	IgG

**Target Details**

<b>Gene Name:</b>	MAP3K5
<b>Reactivity:</b>	Human, Mouse
<b>Immunogen Type:</b>	Conjugated Peptide

<b>Immunogen:</b>	Anti-ASK1 antibody was prepared from whole rabbit serum produced by repeated immunizations with a 16 amino acid synthetic peptide from near the C-terminus of human ASK1.
<b>Purity/Specificity:</b>	Anti-ASK1 Antibody was affinity purified from monospecific antiserum by immunoaffinity chromatography. Cross reactivity with ASK1 from other sources has not been determined.
<b>Relevant Links:</b>	<ul style="list-style-type: none"><li>• <a href="#">UniProtKB - Q99683</a></li><li>• <a href="#">GeneID - 4217</a></li><li>• <a href="#">NCBI - NP_005914.1</a></li></ul>

## Application Details

<b>Tested Applications:</b>	ELISA, IF, IHC, WB
<b>Application Note:</b>	Anti-ASK1 Antibody has been tested for use in ELISA, Western Blotting, Immunocytochemistry and Immunofluorescence. Specific conditions for reactivity should be optimized by the end user. Expect a band at approximately 155 kDa in Western Blots of specific cell lysates and tissues.
<b>Assay Dilutions:</b>	All assays should be optimized by the user. Recommended dilutions (if any) may be listed below.
<b>ELISA:</b>	1:5000-1:20,000
<b>IF:</b>	20 µg/mL
<b>WB:</b>	0.5 - 2 µg/mL

## Formulation

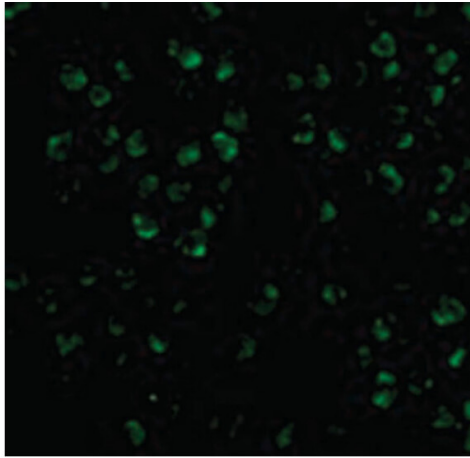
<b>Physical State:</b>	Liquid (sterile filtered)
<b>Concentration:</b>	1 mg/mL by UV absorbance at 280 nm
<b>Buffer:</b>	0.01 M Sodium Phosphate, 0.25 M Sodium Chloride, pH 7.2
<b>Preservative:</b>	0.02% (w/v) Sodium Azide
<b>Stabilizer:</b>	None

## Shipping & Handling

<b>Shipping Condition:</b>	Dry Ice
<b>Storage Condition:</b>	Store vial at -20° C prior to opening. Aliquot contents and freeze at -20° C or below for extended storage. Avoid cycles of freezing and thawing. Centrifuge product if not completely clear after standing at room temperature. This product is stable for several weeks at 4° C as an undiluted liquid. Dilute only prior to immediate use.

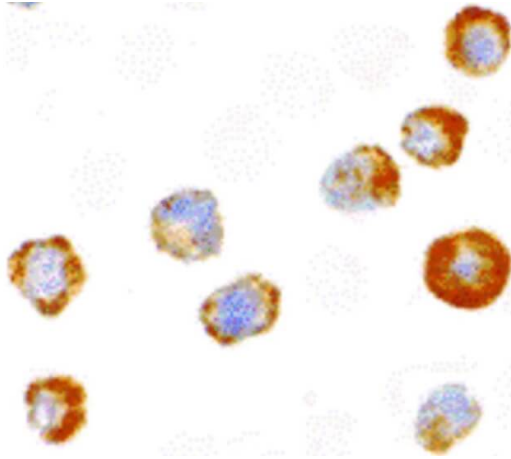
**Expiration:** Expiration date is one (1) year from date of receipt.

## Images



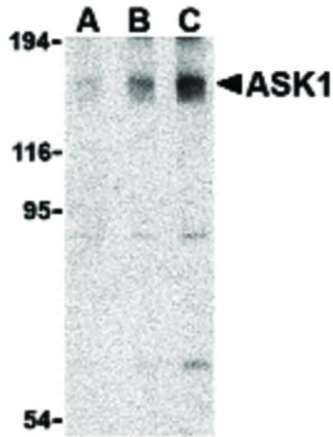
### Immunofluorescence Microscopy

Immunofluorescence Microscopy of ASK1 antibody. Cell Type: 3T3 cells. Fixation: 0.5% PFA. Antigen retrieval: not required. Primary antibody: ASK1 antibody at 20  $\mu\text{g}/\text{mL}$  for 1 h at RT. Secondary antibody: Fluorescein rabbit secondary antibody at 1:10,000 for 45 min at RT. Localization: ASK1 is located in the endoplasmic reticulum and cytoplasm. Staining: ASK1 as green fluorescent signal.



### Immunohistochemistry

Immunocytochemistry of ASK1 antibody. Cell Type: A431 cells. Fixation: formalin fixed paraffin embedded. Antigen retrieval: not required. Primary antibody: ASK1 antibody at 2  $\mu\text{g}/\text{mL}$  for 1 h at RT. Secondary antibody: Peroxidase rabbit secondary antibody at 1:10,000 for 45 min at RT. Localization: ASK1 is located in the endoplasmic reticulum and cytoplasm. Staining: ASK1 is stained brown with hematoxylin purple nuclear counterstain.

**Western Blot**

Western Blot of ASK1 antibody in SW1353 cell lysate. Lane 1: ASK1 antibody at 0.5  $\mu\text{g}/\text{mL}$ . Lane 2: ASK1 antibody at 1  $\mu\text{g}/\text{mL}$ . Lane 3: ASK1 antibody at 2  $\mu\text{g}/\text{mL}$ . Load: 35  $\mu\text{g}$  per lane. Primary antibody: ASK1 antibody at designated concentrations for overnight at 4°C. Secondary antibody: Peroxidase rabbit secondary antibody at 1:10,000 for 45 min at RT. Block: 5% BLOTTO overnight at 4°C.

**Disclaimer**

This product is for research use only and is not intended for therapeutic or diagnostic applications. Please contact a technical service representative for more information. All products of animal origin manufactured by Rockland Immunochemicals are derived from starting materials of North American origin. Collection was performed in United States Department of Agriculture (USDA) inspected facilities and all materials have been inspected and certified to be free of disease and suitable for exportation. All properties listed are typical characteristics and are not specifications. All suggestions and data are offered in good faith but without guarantee as conditions and methods of use of our products are beyond our control. All claims must be made within 30 days following the date of delivery. The prospective user must determine the suitability of our materials before adopting them on a commercial scale. Suggested uses of our products are not recommendations to use our products in violation of any patent or as a license under any patent of Rockland Immunochemicals, Inc. If you require a commercial license to use this material and do not have one, then return this material, unopened to: Rockland Inc., P.O. BOX 5199, Limerick, Pennsylvania, USA.