

**Datasheet for 600-401-Y62****ARR3 Antibody****Overview**

<b>Description:</b>	Anti-ARR3 (RABBIT) Antibody - 600-401-Y62
<b>Item No.:</b>	600-401-Y62
<b>Size:</b>	100 µg
<b>Applications:</b>	ELISA, IF, IHC, WB
<b>Reactivity:</b>	Human, Mouse, Rat
<b>Host Species:</b>	Rabbit

**Product Details**

<b>Background:</b>	Arrestin 3 (ARR3) belongs to the Arrestin family of proteins that function as negative regulators of G protein-coupled receptor (GPCR) signaling (1,2). ARR3 binds the c-Jun N-terminal kinase 3 (JNK3) and scaffolds the apoptosis signal-regulating kinase 1 (ASK1)-MAPK kinase4-JNK3 cascade in a receptor-independent fashion, promoting JNK3 phosphorylation (3,4). ARR3 also mediates the internalization of the C-C chemokine receptor CCR7 upon the binding of its ligand CCL19, but not CCL21, suggesting that it helps mediate CCR7 receptor desensitization (5).
<b>Synonyms:</b>	ARR3 Antibody, ARRX, ARRX, CAR, Arrestin-C, Cone arrestin, C-arrestin
<b>Host Species:</b>	Rabbit
<b>Clonality:</b>	Polyclonal
<b>Format:</b>	IgG

**Target Details**

<b>Gene Name:</b>	ARR3
<b>Reactivity:</b>	Human, Mouse, Rat
<b>Immunogen Type:</b>	Conjugated Peptide
<b>Immunogen:</b>	Anti-ARR3 antibody was prepared from whole rabbit serum produced by repeated immunizations with a 17 amino acid peptide near the C-terminus of human ARR3.

**Purity/Specificity:** Anti-ARR3 antibody was affinity purified from monospecific antiserum by immunoaffinity chromatography. ARR3 antibody is human, mouse and rat reactive. At least three isoforms of ARR3 are known to exist. This antibody is predicted to not cross-react with other members of the arrestin protein family.

**Relevant Links:**

- [UniProtKB - P36575](#)
- [GeneID - 407](#)
- [NCBI - NP\\_004303](#)

## Application Details

**Tested Applications:** ELISA, IF, IHC, WB

**Application Note:** Anti-ARR3 Antibody has been tested for use in ELISA, Western Blotting, Immunohistochemistry, and Immunofluorescence. Expect a band at approximately 43 kDa in Western Blots using positive control EL5 whole cell lysate or other specific cell lysates and tissues. Specific conditions for reactivity should be optimized by the end user.

**Assay Dilutions:** All assays should be optimized by the user. Recommended dilutions (if any) may be listed below.

**ELISA:** 1:5000 - 1:10000

**IF:** 20 µg/mL

**IHC:** 2 µg/mL

**WB:** 0.5 - 1 µg/mL

## Formulation

**Physical State:** Liquid (sterile filtered)

**Concentration:** 1 mg/mL by UV absorbance at 280 nm

**Buffer:** 0.01 M Sodium Phosphate, 0.25 M Sodium Chloride, pH 7.2

**Preservative:** 0.02% (w/v) Sodium Azide

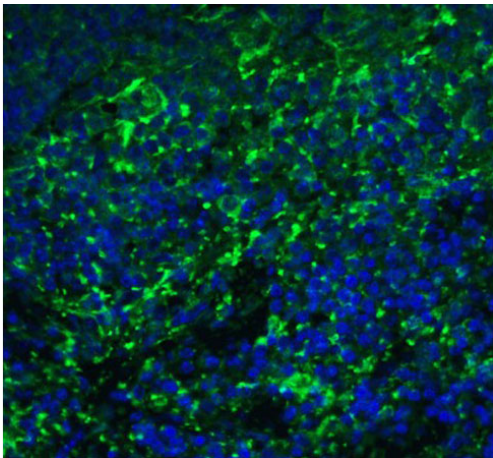
**Stabilizer:** None

## Shipping & Handling

**Shipping Condition:** Dry Ice

<b>Storage Condition:</b>	Store vial at -20° C prior to opening. Aliquot contents and freeze at -20° C or below for extended storage. Avoid cycles of freezing and thawing. Centrifuge product if not completely clear after standing at room temperature. This product is stable for several weeks at 4° C as an undiluted liquid. Dilute only prior to immediate use.
<b>Expiration:</b>	Expiration date is one (1) year from date of receipt.

## Images



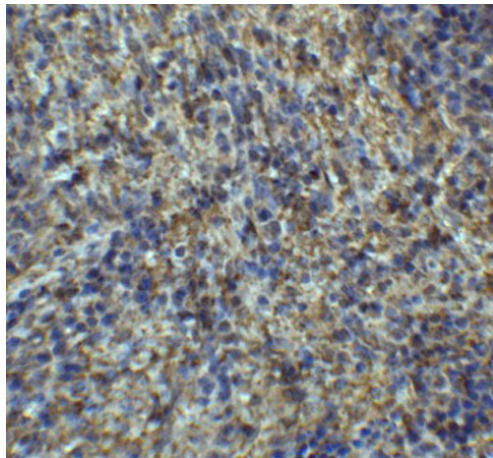
### Immunofluorescence Microscopy

Immunofluorescence of ARR3.

Tissue: mouse spleen tissue.

Primary Antibody: ARR3 antibody at 20 µg/ml.

Staining: ARR3 Antibody (green); DAPI staining (blue).

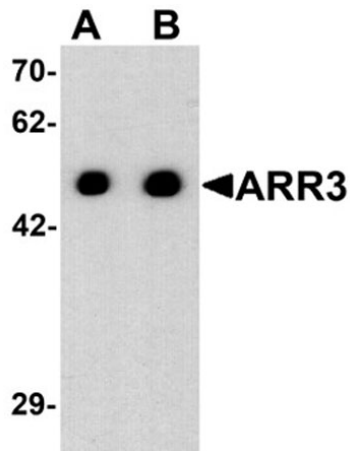


### Immunohistochemistry

Immunohistochemistry of ARR3.

Tissue: mouse spleen tissue.

Primary Antibody: ARR3 antibody at 2 µg/ml.

**Western Blot**

Western blot analysis of ARR3.

Load: EL4 cell lysate.

Primary Antibody: ARR3 antibody at (A) 0.5 and (B) 1 µg/ml.

**Disclaimer**

This product is for research use only and is not intended for therapeutic or diagnostic applications. Please contact a technical service representative for more information. All products of animal origin manufactured by Rockland Immunochemicals are derived from starting materials of North American origin. Collection was performed in United States Department of Agriculture (USDA) inspected facilities and all materials have been inspected and certified to be free of disease and suitable for exportation. All properties listed are typical characteristics and are not specifications. All suggestions and data are offered in good faith but without guarantee as conditions and methods of use of our products are beyond our control. All claims must be made within 30 days following the date of delivery. The prospective user must determine the suitability of our materials before adopting them on a commercial scale. Suggested uses of our products are not recommendations to use our products in violation of any patent or as a license under any patent of Rockland Immunochemicals, Inc. If you require a commercial license to use this material and do not have one, then return this material, unopened to: Rockland Inc., P.O. BOX 5199, Limerick, Pennsylvania, USA.