

Datasheet for 600-401-Y59**ARHGAP39 Antibody****Overview**

Description:	Anti-ARHGAP39 (RABBIT) Antibody - 600-401-Y59
Item No.:	600-401-Y59
Size:	100 µg
Applications:	ELISA, WB
Reactivity:	Human, Mouse, Rat
Host Species:	Rabbit

Product Details

Background:	Rho GTPases are important regulators of the actin cytoskeleton and consequently influence the shape and migration of cells. GTPase-activating proteins (GAPs) accelerate the intrinsic rate of GTP hydrolysis of Ras-related proteins. ARHGAP39 (Rho GTPase activating protein 39) is a 1,083 amino acid nuclear protein that contains one MyTH4 domain, one Rho GAP domain and two WW domains. It is encoded by a gene located on human chromosome 8, which is associated with a variety of diseases and malignancies. ARHGAP39 regulates robo signaling and plays important roles in axon guidance.
Synonyms:	ARHGAP39 Antibody, CrGAP, Vilse, KIAA1688, Rho GTPase-activating protein 39
Host Species:	Rabbit
Clonality:	Polyclonal
Format:	IgG

Target Details

Gene Name:	ARHGAP39
Reactivity:	Human, Mouse, Rat
Immunogen Type:	Conjugated Peptide
Immunogen:	Anti-ARHGAP39 antibody was prepared from whole rabbit serum produced by repeated immunizations with an 18 amino acid synthetic peptide near the C-terminus of human ARHGAP39.

Purity/Specificity: Anti-ARHGAP39 Antibody was affinity purified from monospecific antiserum by immunoaffinity chromatography. ARHGAP39 antibody is predicted to not cross-react with other RhoGAP protein family members.

Relevant Links:

- [UniProtKB - Q9C0H5](#)
- [GeneID - 80728](#)
- [NCBI - NP_079527](#)

Application Details

Tested Applications: ELISA, WB

Application Note: Anti-ARHGAP39 Antibody has been tested for use in ELISA and Western Blotting. Specific conditions for reactivity should be optimized by the end user. Expect a band at approximately 121 kDa in Western Blots of specific cell lysates and tissues.

Assay Dilutions: All assays should be optimized by the user. Recommended dilutions (if any) may be listed below.

ELISA: 1:10,000 - 1:20,000

WB: 1 - 2 µg/mL

Formulation

Physical State: Liquid (sterile filtered)

Concentration: 1 mg/mL by UV absorbance at 280 nm

Buffer: 0.01 M Sodium Phosphate, 0.25 M Sodium Chloride, pH 7.2

Preservative: 0.02% (w/v) Sodium Azide

Stabilizer: None

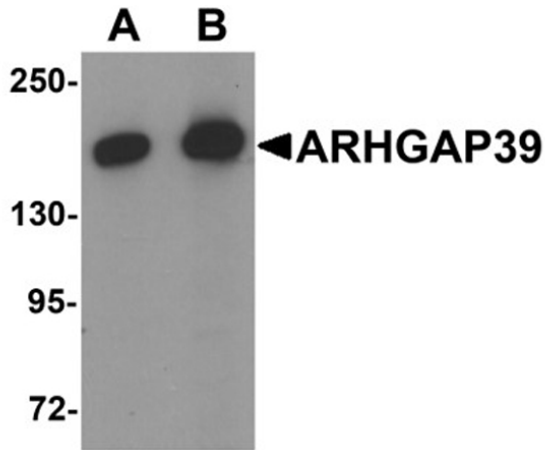
Shipping & Handling

Shipping Condition: Dry Ice

Storage Condition: Store vial at -20° C prior to opening. Aliquot contents and freeze at -20° C or below for extended storage. Avoid cycles of freezing and thawing. Centrifuge product if not completely clear after standing at room temperature. This product is stable for several weeks at 4° C as an undiluted liquid. Dilute only prior to immediate use.

Expiration: Expiration date is one (1) year from date of receipt.

Images



Western Blot

Western blot analysis of ARHGAP39. Load: A20 cell lysate.
Primary Antibody: ARHGAP39 antibody at (A) 1 $\mu\text{g}/\text{mL}$ and
(B) 2 $\mu\text{g}/\text{mL}$.

Disclaimer

This product is for research use only and is not intended for therapeutic or diagnostic applications. Please contact a technical service representative for more information. All products of animal origin manufactured by Rockland Immunochemicals are derived from starting materials of North American origin. Collection was performed in United States Department of Agriculture (USDA) inspected facilities and all materials have been inspected and certified to be free of disease and suitable for exportation. All properties listed are typical characteristics and are not specifications. All suggestions and data are offered in good faith but without guarantee as conditions and methods of use of our products are beyond our control. All claims must be made within 30 days following the date of delivery. The prospective user must determine the suitability of our materials before adopting them on a commercial scale. Suggested uses of our products are not recommendations to use our products in violation of any patent or as a license under any patent of Rockland Immunochemicals, Inc. If you require a commercial license to use this material and do not have one, then return this material, unopened to: Rockland Inc., P.O. BOX 5199, Limerick, Pennsylvania, USA.