

Datasheet for 600-401-Y52**APPBP2 Antibody****Overview**

Description:	Anti-APPBP2 (RABBIT) Antibody - 600-401-Y52
Item No.:	600-401-Y52
Size:	100 µg
Applications:	ELISA, IF, IHC, WB
Reactivity:	Human, Mouse, Rat
Host Species:	Rabbit

Product Details

Background:	The amyloid beta precursor protein (cytoplasmic tail) binding protein 2 (APPBP2), also known as PAT1, interacts with microtubules and is functionally associated with beta-amyloid precursor protein transport and/or processing (1). The beta-amyloid precursor protein is a cell surface protein with signal-transducing properties, and it is thought to play a role in the pathogenesis of Alzheimer's disease (2). APPBP2 has been found to be highly expressed in breast cancer (3).
Synonyms:	APPBP2 Antibody, PAT1, APP-BP2, HS.84084, KIAA0228, PAT1, Amyloid protein-binding protein 2, Amyloid beta precursor protein-binding protein 2
Host Species:	Rabbit
Clonality:	Polyclonal
Format:	IgG

Target Details

Gene Name:	APPBP2
Reactivity:	Human, Mouse, Rat
Immunogen Type:	Conjugated Peptide
Immunogen:	Anti-APPBP2 antibody was prepared from whole rabbit serum produced by repeated immunizations with an 18 amino acid peptide near the C-terminus of human APPBP2.

Purity/Specificity: Anti-APPBP2 antibody was affinity purified from monospecific antiserum by immunoaffinity chromatography. APPBP2 antibody is human, mouse and rat reactive. At least two isoforms of APPBP2 are known to exist; this antibody will detect both isoforms.

Relevant Links:

- [UniProtKB - Q92624](#)
- [GeneID - 10513](#)
- [NCBI - NP_006371](#)

Application Details

Tested Applications: ELISA, IF, IHC, WB

Application Note: Anti-APPBP2 Antibody has been tested for use in ELISA, Western Blotting, Immunohistochemistry and Immunofluorescence. Specific conditions for reactivity should be optimized by the end user. Expect a band at approximately 67 kDa in Western Blots of specific cell lysates and tissues.

Assay Dilutions: All assays should be optimized by the user. Recommended dilutions (if any) may be listed below.

ELISA: 1:5000 - 1:10000

IF: 20 µg/mL

IHC: 5 µg/mL

WB: 0.5 - 1 µg/mL

Formulation

Physical State: Liquid (sterile filtered)

Concentration: 1 mg/mL by UV absorbance at 280 nm

Buffer: 0.01 M Sodium Phosphate, 0.25 M Sodium Chloride, pH 7.2

Preservative: 0.02% (w/v) Sodium Azide

Stabilizer: None

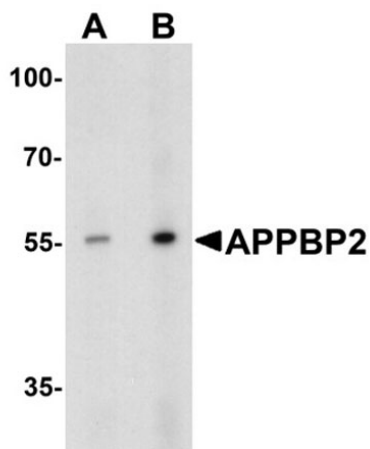
Shipping & Handling

Shipping Condition: Dry Ice

Storage Condition: Store vial at -20° C prior to opening. Aliquot contents and freeze at -20° C or below for extended storage. Avoid cycles of freezing and thawing. Centrifuge product if not completely clear after standing at room temperature. This product is stable for several weeks at 4° C as an undiluted liquid. Dilute only prior to immediate use.

Expiration: Expiration date is one (1) year from date of receipt.

Images

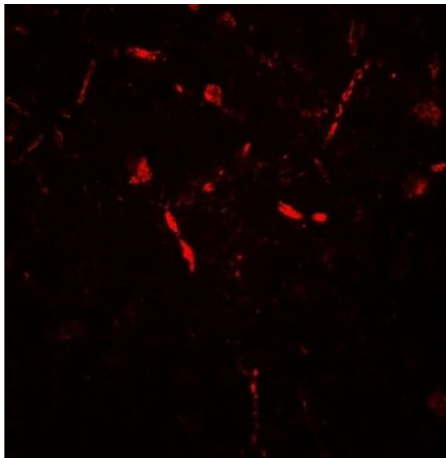


Western Blot

Western blot of APPBP2.

Load: human brain tissue lysate.

Primary Antibody: APPBP2 antibody at (A) 0.5 and (B) 1 µg/ml.

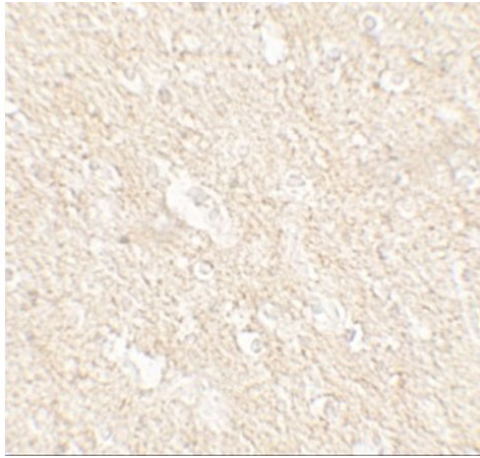


Immunohistochemistry

Immunofluorescence of APPBP2.

Tissue: human brain tissue.

Primary Antibody: APPBP2 antibody at 20 µg/mL.

**Immunohistochemistry**

Immunohistochemistry of APPBP2.

Tissue: human brain tissue.

Primary Antibody: APPBP2 antibody at 5 µg/mL.

Disclaimer

This product is for research use only and is not intended for therapeutic or diagnostic applications. Please contact a technical service representative for more information. All products of animal origin manufactured by Rockland Immunochemicals are derived from starting materials of North American origin. Collection was performed in United States Department of Agriculture (USDA) inspected facilities and all materials have been inspected and certified to be free of disease and suitable for exportation. All properties listed are typical characteristics and are not specifications. All suggestions and data are offered in good faith but without guarantee as conditions and methods of use of our products are beyond our control. All claims must be made within 30 days following the date of delivery. The prospective user must determine the suitability of our materials before adopting them on a commercial scale. Suggested uses of our products are not recommendations to use our products in violation of any patent or as a license under any patent of Rockland Immunochemicals, Inc. If you require a commercial license to use this material and do not have one, then return this material, unopened to: Rockland Inc., P.O. BOX 5199, Limerick, Pennsylvania, USA.