

## Datasheet for 600-401-Y44

## Apolipoprotein A-IV Antibody

### Overview

<b>Description:</b>	Anti-Apolipoprotein A-IV (RABBIT) Antibody - 600-401-Y44
<b>Item No.:</b>	600-401-Y44
<b>Size:</b>	100 µg
<b>Applications:</b>	ELISA, WB
<b>Reactivity:</b>	Human, Chicken
<b>Host Species:</b>	Rabbit

### Product Details

<b>Background:</b>	Apolipoprotein A4 (also known as ApoA-IV) is a plasma protein that is O-linked glycoprotein after proteolytic processing. ApoA4 is a major constituent of HDL and it also can be found on the surface of newly synthesized chylomicrons. The physiological function of ApoA4 is not completely identified so far, but several evidences from vitro studies indicate that this apolipoprotein involves in several steps of the reverse cholesterol transport pathway, which transports cholesterol from peripheral cells back to the liver.
<b>Synonyms:</b>	ApoA4 Antibody, Apolipoprotein A-IV, Apolipoprotein A4, Apo-AIV
<b>Host Species:</b>	Rabbit
<b>Clonality:</b>	Polyclonal
<b>Format:</b>	IgG

### Target Details

<b>Gene Name:</b>	apoAIV
<b>Reactivity:</b>	Human, Chicken
<b>Immunogen Type:</b>	Conjugated Peptide
<b>Immunogen:</b>	Anti-ApoA4 antibody was prepared from whole rabbit serum produced by repeated immunizations with a 20 amino acid synthetic peptide near the C-terminus of chicken ApoA4.
<b>Purity/Specificity:</b>	Anti-ApoA4 Antibody was affinity purified from monospecific antiserum by immunoaffinity chromatography. Cross reactivity with ApoA4 from other sources has not been determined.

<b>Relevant Links:</b>	<ul style="list-style-type: none"><li>• <a href="#">UniProtKB - O93601</a></li><li>• <a href="#">GeneID - 395780</a></li><li>• <a href="#">NCBI - NP_990269.1</a></li></ul>
------------------------	---

## Application Details

<b>Tested Applications:</b>	ELISA, WB
<b>Application Note:</b>	Anti-ApoA4 Antibody has been tested for use in ELISA and Western Blotting. Specific conditions for reactivity should be optimized by the end user. Expect a band at approximately 45 kDa in Western Blots of specific cell lysates and tissues.
<b>Assay Dilutions:</b>	All assays should be optimized by the user. Recommended dilutions (if any) may be listed below.
<b>ELISA:</b>	1:10,000
<b>WB:</b>	1 µg/mL

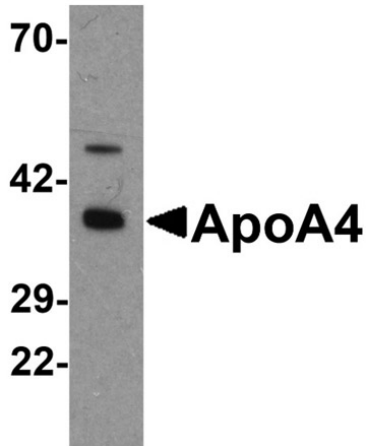
## Formulation

<b>Physical State:</b>	Liquid (sterile filtered)
<b>Concentration:</b>	1 mg/mL by UV absorbance at 280 nm
<b>Buffer:</b>	0.01 M Sodium Phosphate, 0.25 M Sodium Chloride, pH 7.2
<b>Preservative:</b>	0.02% (w/v) Sodium Azide
<b>Stabilizer:</b>	None

## Shipping & Handling

<b>Shipping Condition:</b>	Dry Ice
<b>Storage Condition:</b>	Store vial at -20° C prior to opening. Aliquot contents and freeze at -20° C or below for extended storage. Avoid cycles of freezing and thawing. Centrifuge product if not completely clear after standing at room temperature. This product is stable for several weeks at 4° C as an undiluted liquid. Dilute only prior to immediate use.
<b>Expiration:</b>	Expiration date is one (1) year from date of receipt.

## Images

**Western Blot**

Western blot analysis of ApoA4.

Load: chicken small intestine tissue lysate.

Primary Antibody: ApoA4 antibody at 1  $\mu$ g/mL.

**Disclaimer**

This product is for research use only and is not intended for therapeutic or diagnostic applications. Please contact a technical service representative for more information. All products of animal origin manufactured by Rockland Immunochemicals are derived from starting materials of North American origin. Collection was performed in United States Department of Agriculture (USDA) inspected facilities and all materials have been inspected and certified to be free of disease and suitable for exportation. All properties listed are typical characteristics and are not specifications. All suggestions and data are offered in good faith but without guarantee as conditions and methods of use of our products are beyond our control. All claims must be made within 30 days following the date of delivery. The prospective user must determine the suitability of our materials before adopting them on a commercial scale. Suggested uses of our products are not recommendations to use our products in violation of any patent or as a license under any patent of Rockland Immunochemicals, Inc. If you require a commercial license to use this material and do not have one, then return this material, unopened to: Rockland Inc., P.O. BOX 5199, Limerick, Pennsylvania, USA.